

Buccaneer
1947



This edition dedicated to Dean Burleson
Graduate of Milligan College.

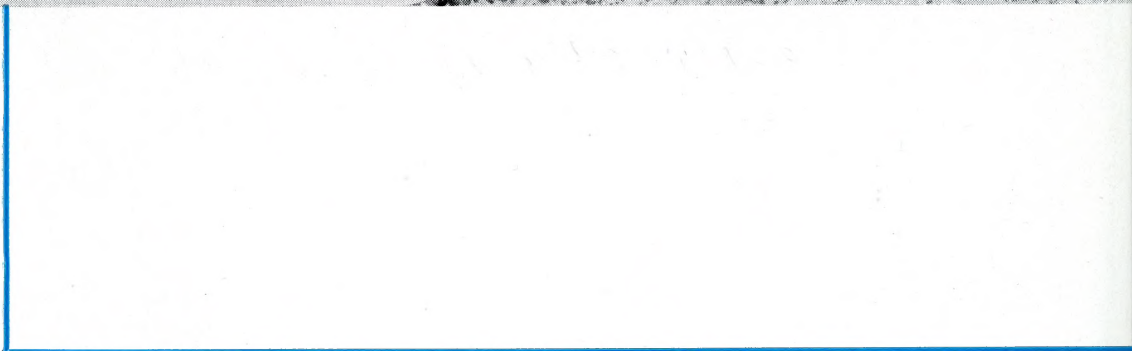
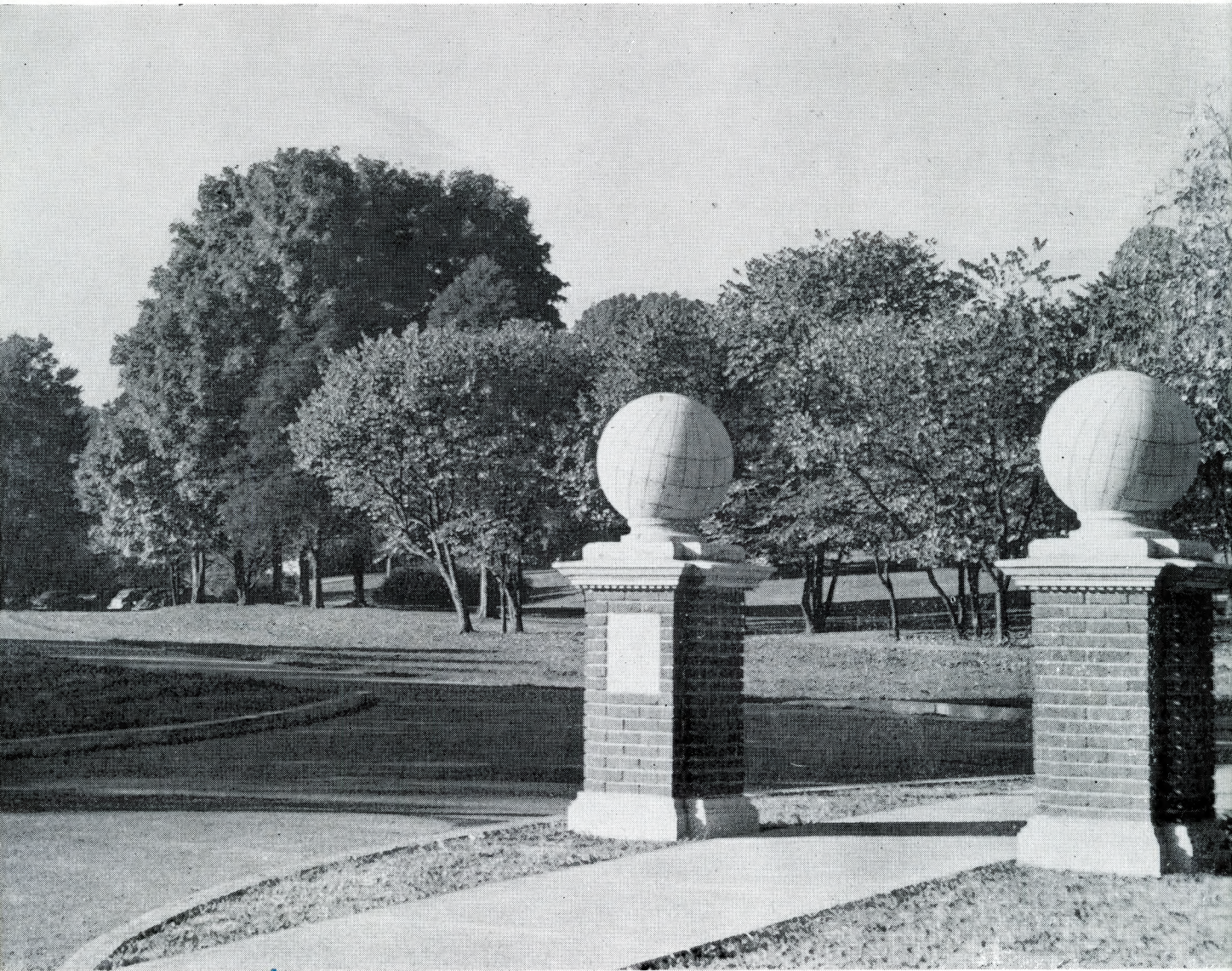
Buccanery
1947

Dr. Alexander,
I am glad that it has
been my privilege for our
paths to cross. I like to
meet Big fellows who are
really big enough to be
human.

I appreciate you a lot.
May the best be yours
Always -

Harry Conell





THE NINETEEN FORTY-SEVEN

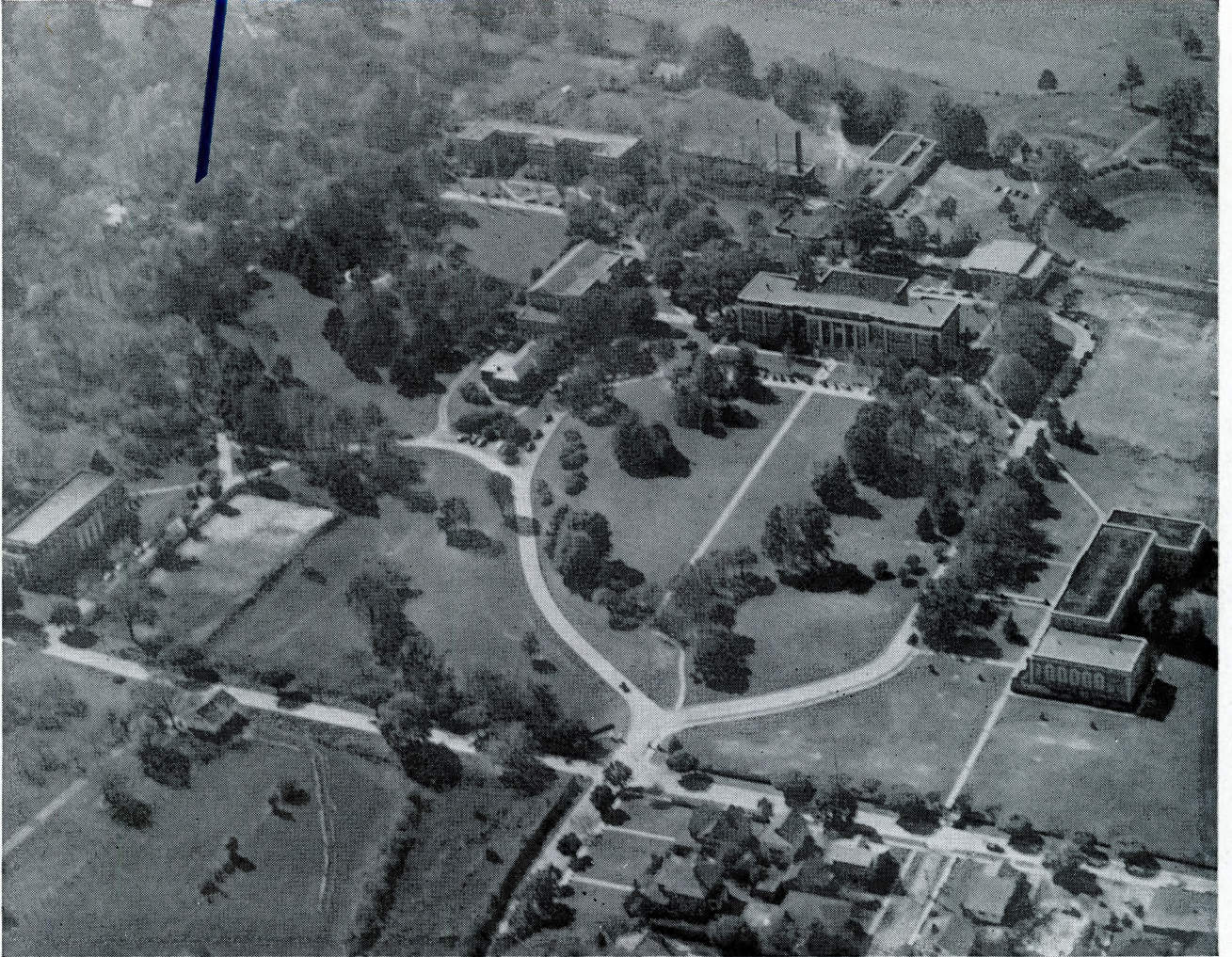
Buccanery

PRESENTS

EAST TENNESSEE STATE COLLEGE
JOHNSON CITY :- TENNESSEE

*The entrance to life
Is a gate of fate,
When opened
Is a realm of thought*

Theme



We, your staff, have endeavored to present our college life in its leading aspects, which are twain and are represented by: seen and unseen; tangible and intangible; things on the surface and those far beneath; our campus we love and leave, and things we take and hold.

Here are the disintegrated parts, each important, brought together between two covers.

The entrance to life a gate of fate,

When opened, is a realm of thought

Revealed by experience embedded in our leaders

With ideals presented to become ideals preserved by many.

We linger beside deep waters of untold learning,

Catching a flicker of unveiled, hidden fate.

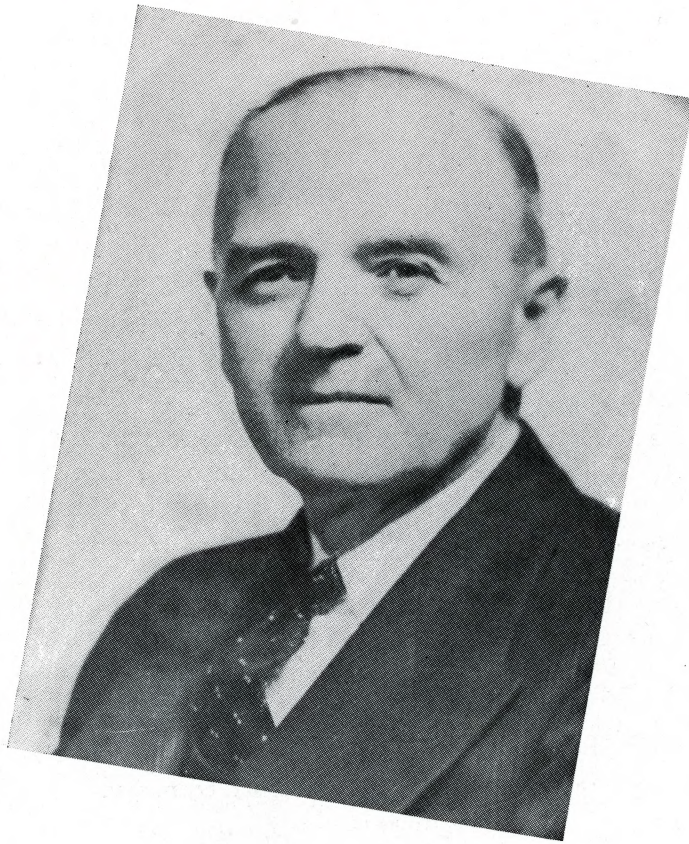
We recall: our associations with our fellowmen,

Teamwork and play, joys and sorrows, defeat and success;

Those upon whom fortune has bestowed fame and renown.

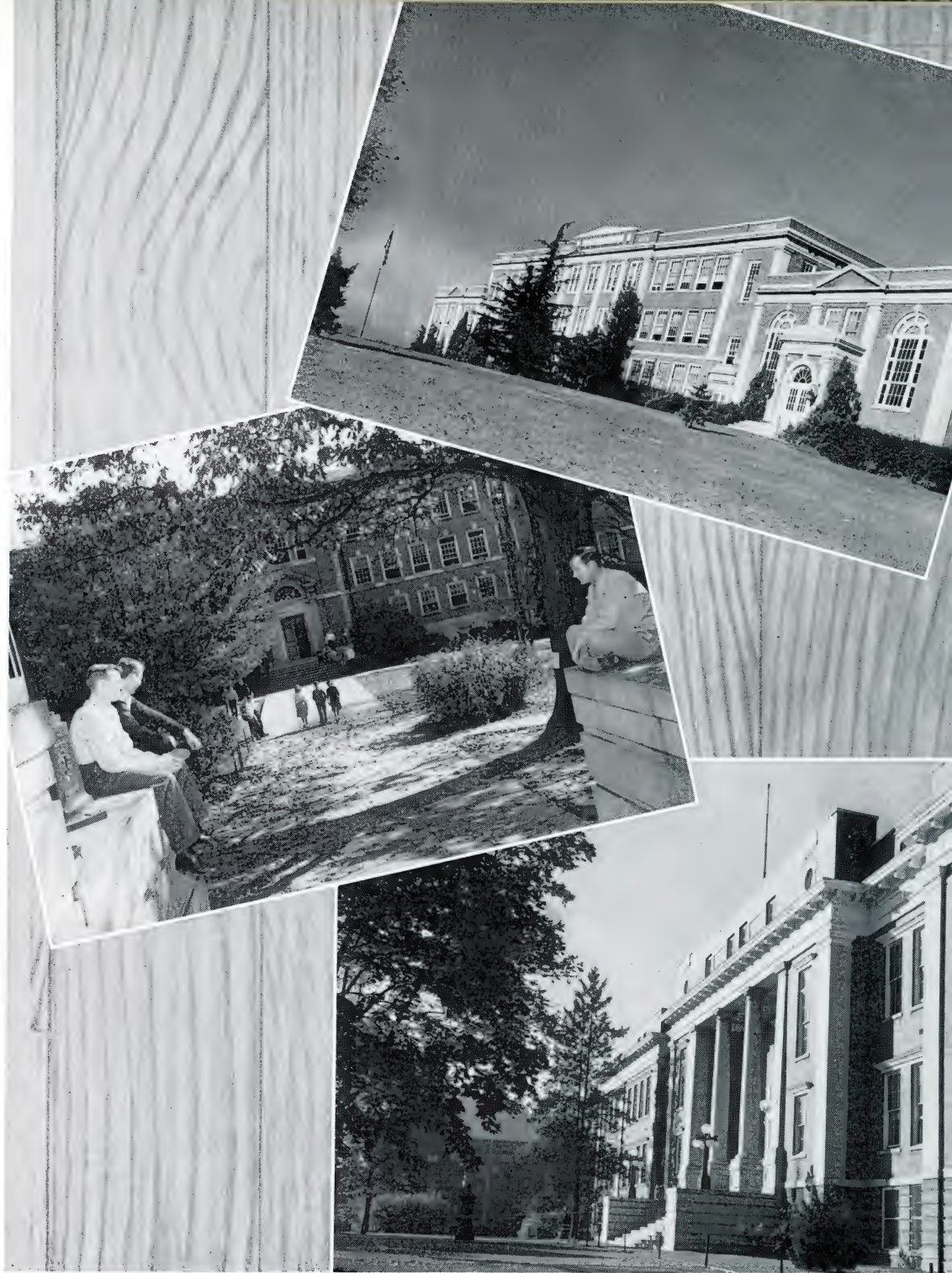
May life here be broadened as we separate. We cannot take these grounds, these buildings, with us, but may we take those ideals that help us live.

THE EDITOR

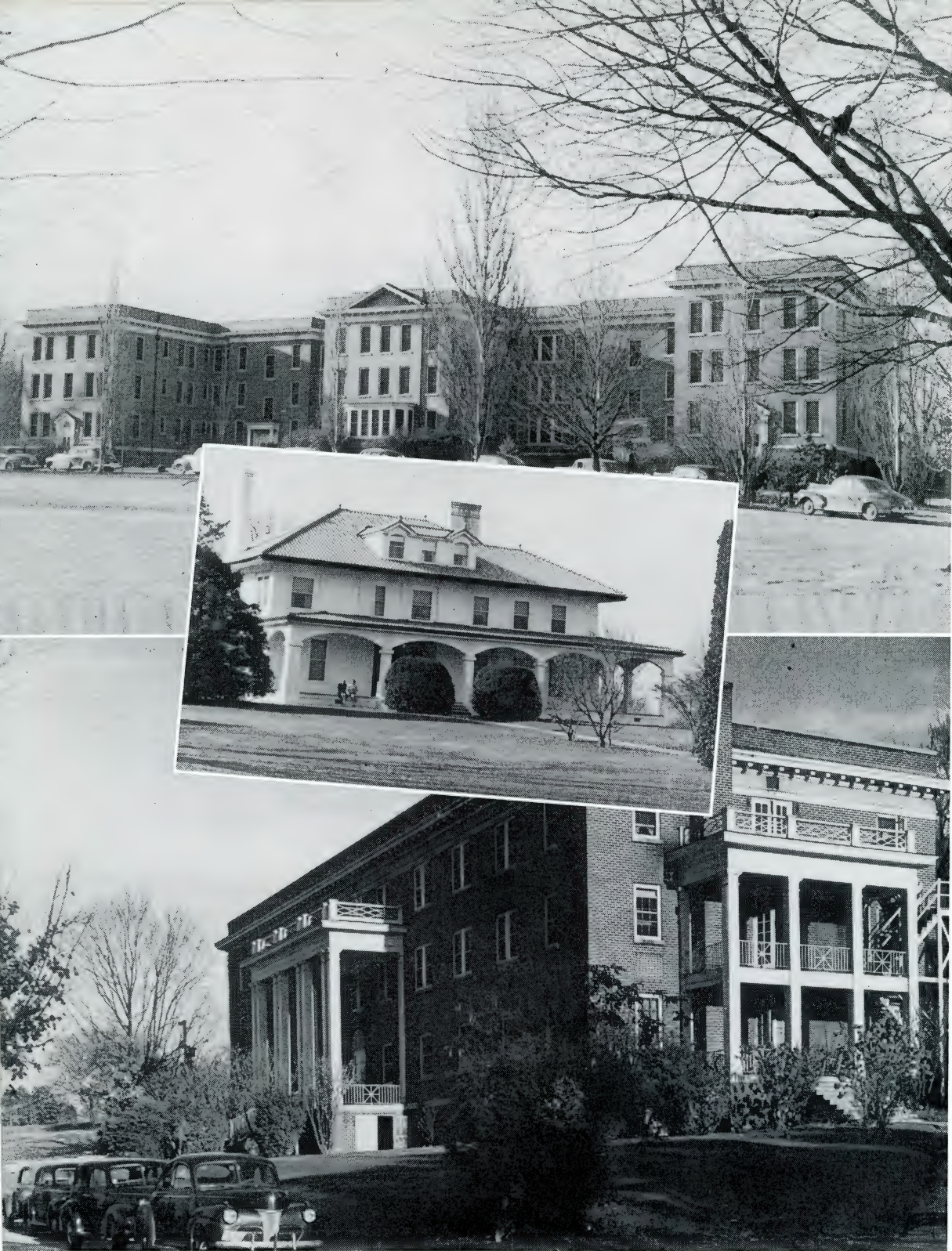


The word "tangible" means "capable of being touched." It is indicative of the material things such as, (1) the college grounds in their picturesque setting from which the towering mountain of East Tennessee can be viewed, and (2) the college buildings including their classrooms, laboratories, books, and other learning and instructional materials and equipment representing the tools with which the students work. The people of the State of Tennessee have provided these tangible facilities in Johnson City for the educational training of the young men and women who enter the East Tennessee State College to prepare themselves to render greater service in the building of Tennessee and America.

Jim McCord
Jim McCord
Governor



**TRAINING SCHOOL
LIBRARY
ADMINISTRATION**



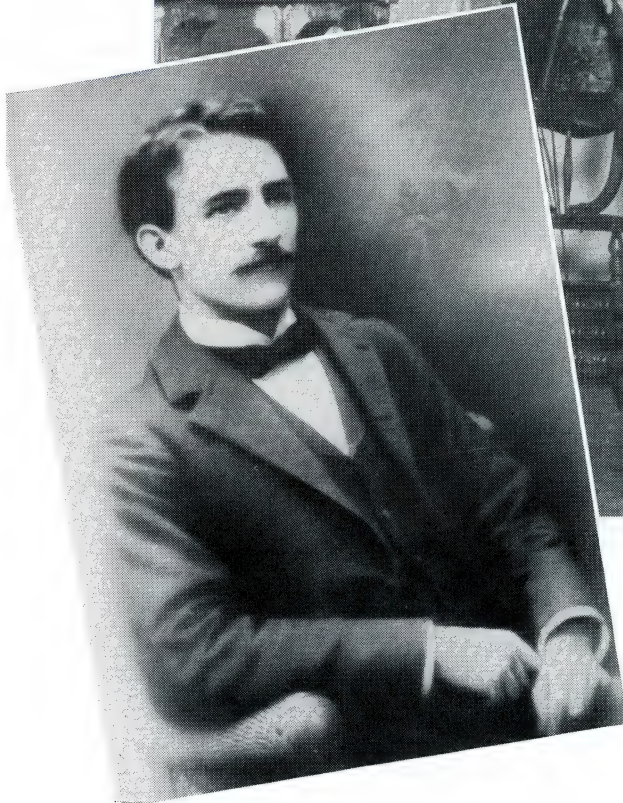
**CARTER HALL
COOPER HALL
RITTER HALL**

Dedication

D. S. BURLESON
Dean Emeritus (1946)

Throughout the years, Dean Burleson has represented to those about him the ideals of living on a high plane. In young manhood he set up those standards which gave him the ideas and ideals that we at E.T.S.C. have recognized and respected. To Dean Burleson, whose challenging words of encouragement and whose examples of worthwhile and unselfish service for his fellowman have ever been a source of inspiration to those who know him, we, the Senior Class, respectfully dedicate this edition of the BUCCANEER.

DAVID SINCLAIR BURLESON
Student (1898)



Administration



Dr. Charles C. Sherrod

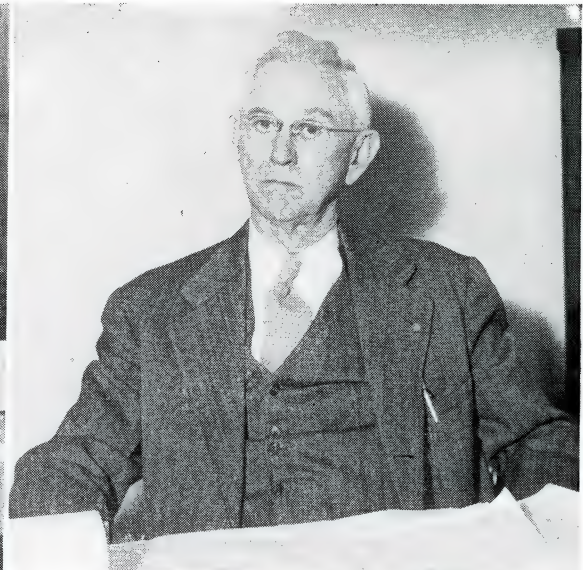
OUR PRESIDENT

Revealed by experience embedded in our leaders

With ideals presented to become ideals preserved by many.



P. W. Alexander
Dean



Frank Field
Registrar



John A. Clack
Business Manager



Ella V. Ross
Dean of Women

SOCIAL STUDIES

Dr. Ruben L. Parson
Evangeline Hartsook
Dr. D. G. Stout
Marie Harrison
W. F. Rogers
Maxine Mathews

ENGLISH

Grace Leab
Mahala Hays
D. S. Burleson
Willis B. Bible
Christine Burleson

HEALTH AND PHYSICAL EDUCATION

Dr. J. G. McMurray
Al Boyer
Eileen Corzine
Lucille Goodman
Dr. L. M. Fraley

MODERN LANGUAGE

Isabelle Goodwin
C. Hodge Mathes

INDUSTRIAL AND FINE ARTS

Alfred H. Moore
Elizabeth Slocumb
James Homer Davis

EDUCATION

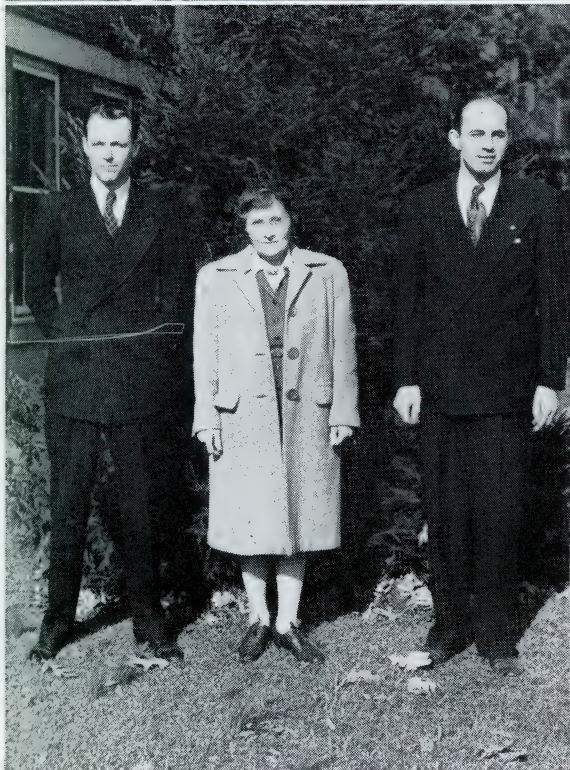
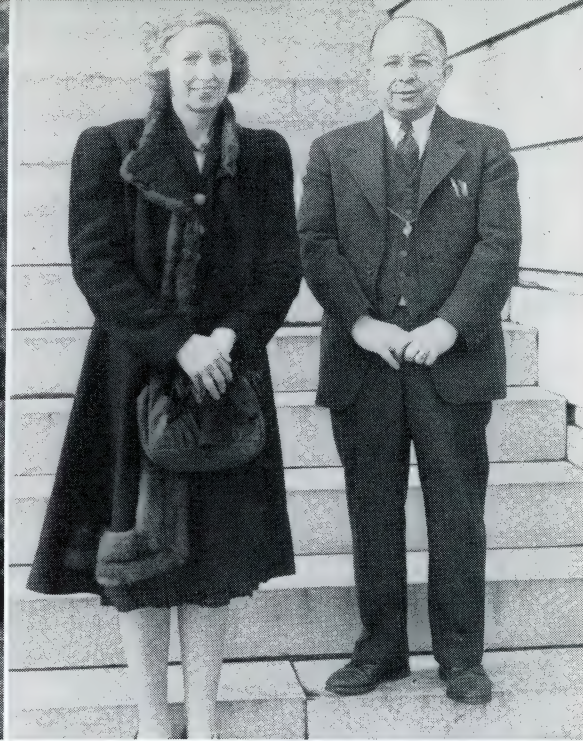
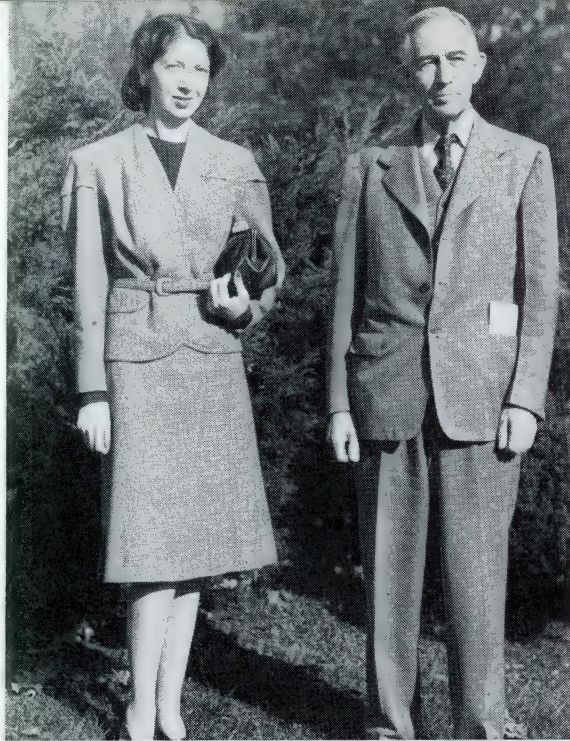
Emma Farrell
Dr. Ralph W. House

BIOLOGICAL SCIENCE

Dr. D. M. Brown
Dr. J. T. Tanner



THE FACULTY



MODERN LANGUAGES

Isabell Goodwin
C. Hodge Mathes

INDUSTRIAL AND FINE ARTS

Alfred H. Moore
Elizabeth Slokum
James Homer Davis

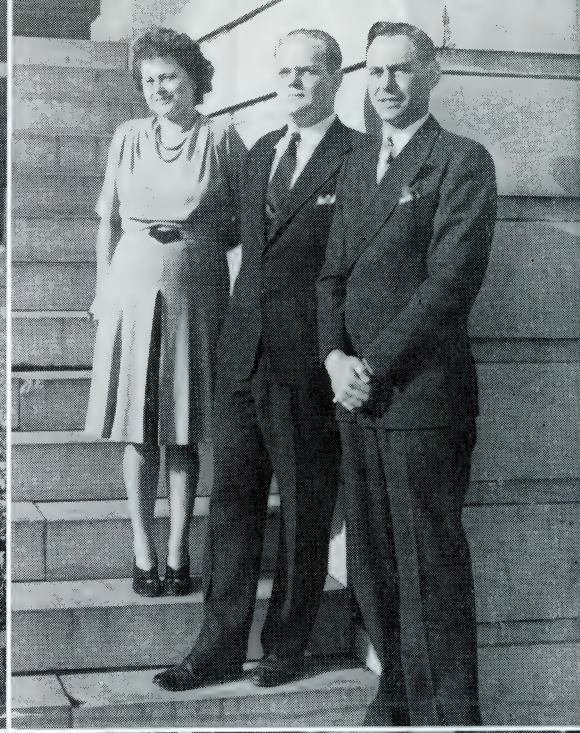
EDUCATION

Emma Farrell
Dr. Ralph W. House

BIOLOGICAL SCIENCE

Dr. D. M. Brown
Dr. J. T. Tanner

A N D S T A F F O F E T S C



MATHEMATICS

Vella Mae Smith
T. C. Carson
Velma Cloyd

BUSINESS EDUCATION

Margaret Linney
O. R. Sutton
Horace H. Willis

LIBRARY SCIENCE

A. N. McNeal
Mary Lyons
Eva Leonard
Sara Tipton

HOME ECONOMICS

Rachel Eatherly
Mrs. Irene M. Field
Dora Dean DePriest
Mrs. A. T. Earnest



TRAINING SCHOOL

First Row: Helen Rafferty, Margaret Madden, Eleanor Robertson, Isabel Martin, Alma Trivett.

Second Row: Sara Tipton, Vella Mae Smith, Mrs. Jeanne Hendry, Mrs. Gertrude Boren, Dora Deane DePriest.

Third Row: Lee W. Langston, David J. Harkness.



PHYSICAL SCIENCES

Frank Isenberg
Clifford Boyd
A. C. Graybeal



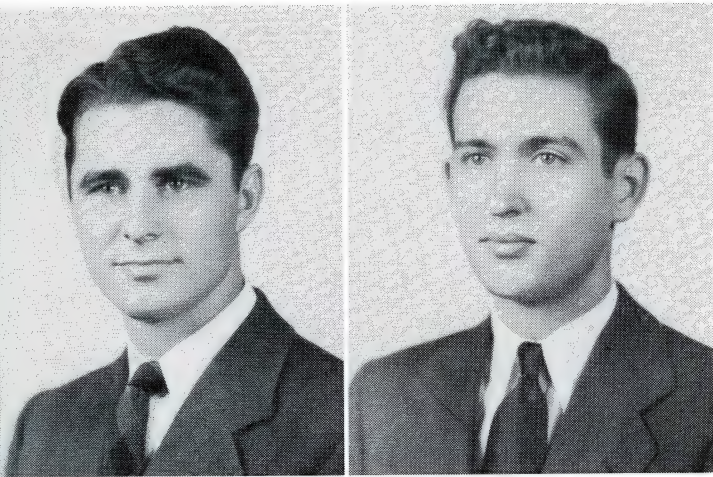
CLERICAL

Margaret Gilliland
Juanita Lindsay
Jean Scott
Mildred Cole
Virginia B. Cox
Louise Rader

MUSIC

Dr. M. E. Butterfield
Mary Florence Hart
Virgil Self





HARRY CORRELL
Editor

LAWRENCE MOFFATT
Business Manager

THE BUCCANEER STAFF

EDITORIAL STAFF

Harry Correll _____ Editor
 Minnis Freshour ___ Assoc. Ed.
 Elizabeth Rowe _____ Class Ed.
 Charlene Doby - Organizations
 V. C. Adcock _____ Music
 Bud Carpenter _____ Sports
 Joe Alder _____ Features
 Marian Nave ___ Photographs
 Joan Cardwell _____ Staff Sec.
 Terrell Ponder _____ Art
 Isabelle Goodwin
 Sponsor



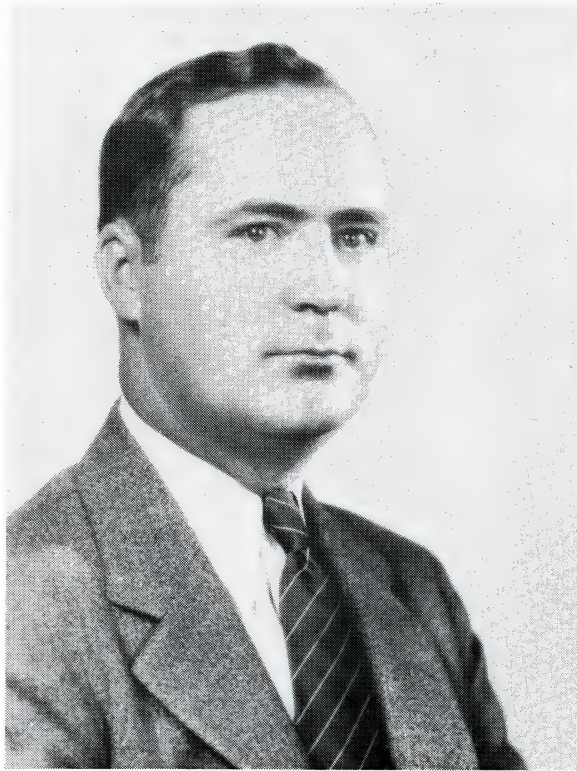
BUSINESS STAFF

Lawrence Moffatt ___ Bus. Mgr.
 Earl Whitney, Assoc. Bus. M.

Staff:

Bill Lyle
 Eleanor Warren
 Janet Diehl
 Sam Sherwood
 Fred King
 Sue Groseclose
 Mary Beryl Hall



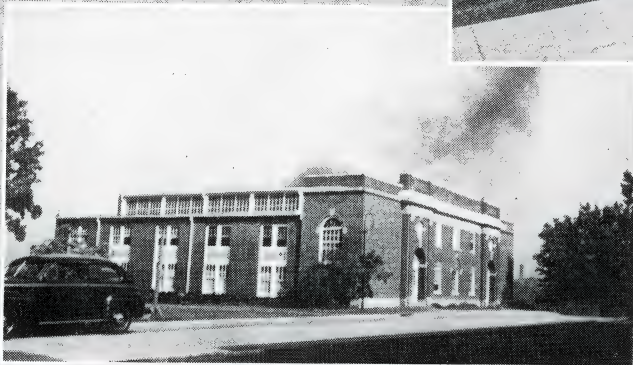
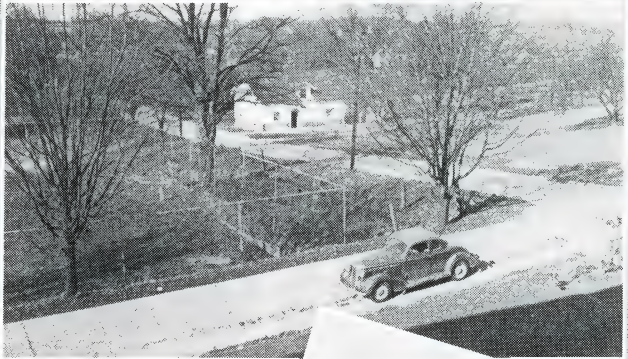


Every day we come into contact on the one hand with those things which can be perceived with our senses, and on the other hand with those things which cannot be perceived with the senses, but which nevertheless are very real. We call the latter the intangible things of life. They include the character and personality of our teachers as well as that of our fellow students. Their influence upon one's life is just as real as the tangible buildings and classrooms in which those teachers and fellow students work.

Another one of the intangibles is the so-called "spirit of the institution." There is something in it which, though difficult to describe, has the power to inspire one with a desire to do one's best in school and out of school to make the world a better place in which to live. Other intangibles, such as the attitudes and ideals of those with whom we come in contact, exert a tremendous influence upon a person's life. The cultural subjects such as art and music may also be listed among the intangibles which help to lend inspiration toward making the world more beautiful. Knowledge, learning, and understanding are likewise intangible assets whose potential worth is inestimable.

"Intangibles" are the things a student can carry away with him to transmit to the world without in any way diminishing the supply within himself. In fact, when he shares these "intangibles" with the world, the supply within himself is multiplied.

BURGIN E. DOSSETT, Chairman
State Board of Education and
Commissioner of Education



STATE'S ACRES

Classes



*We linger beside deep waters of untold learning,
Catching a flicker of unveiled, hidden fate.*



SENIOR CLASS OFFICERS

President _____ HARRY FORTUNE

Vice-President (not pictured) _____ COY BAILEY

Secretary _____ MARIAN NAVE

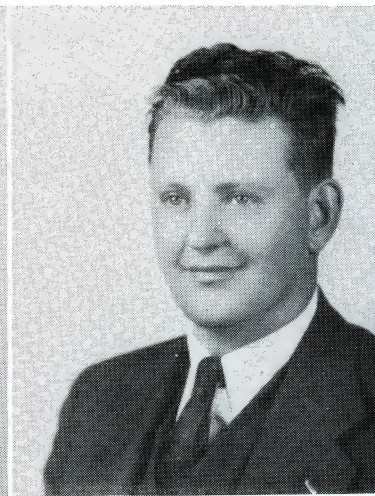
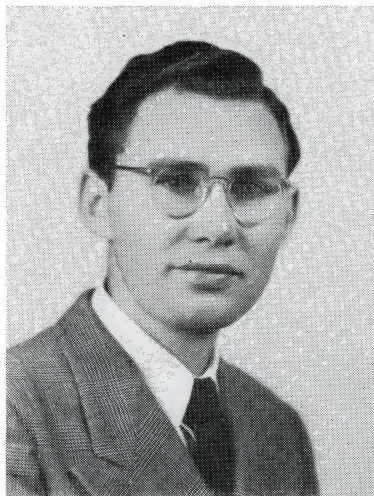
Treasurer _____ FRANK TANNEWITZ

VERNON C. ADCOCK, JR.

Fountain City, Tennessee

Music, English

Band '43-'47, Captain '45, Student Director '46; Orchestra '45; Glee Club '44-'47; Choir '43-'47; Mu Epsilon Nu Fraternity '45-'47, Secretary '46; Footlight Players '45; **Buccaneer Staff '46-'47.**



JOE ALDER

Sneedville, Tennessee

History, Social Science, Biology

Transfer from L. M. U.

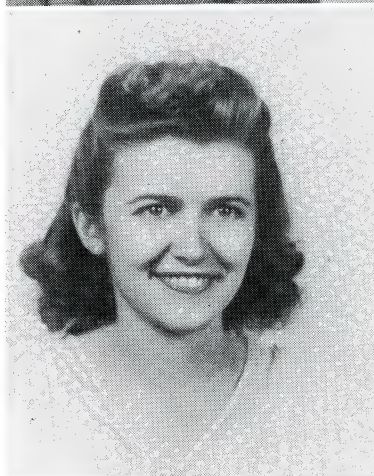
Associate Editor of Blue and Gray '35-'36; President Student Body '45-'46; I.R.C. '45-'47; Mu Epsilon Nu '45-'46; **Buccaneer Staff, '46-'47; Honor Roll.**

LILLIAN ELIZABETH ANDERSON

Edison, Tennessee

English, Social Studies, Physical Education

Y.W.C.A. '44-'46; Leadership Club '44-'47; Intramurals '44-'47; A.C.E. '44-'47; Reporter '45-'47; Wesleyan Foundation '44-'47; Miracle Book Club '44-'46; Phi Alpha Sorority '45-'47, Treasurer '46, Second Vice-President '47; TS Award.



MARY LUCILLE ARCHER

Johnson City, Tennessee

English, History

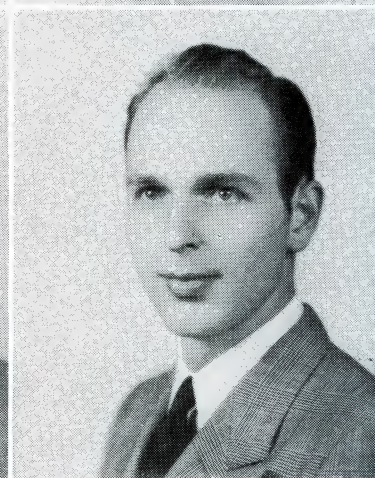
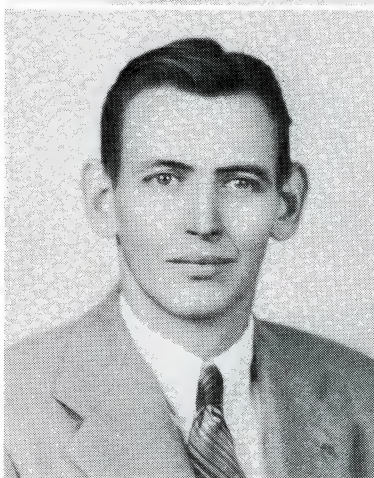
Glee Club '28; Hiking Club '28; International Relations Club '46-'47.

COY BAILEY

Toledo, North Carolina

Social Science, History

Transfer from Mars Hill College; Vice-President of Senior Class.



ROBERT J. BEIL

Jonesboro, Tennessee

Science, Mathematics

Transfer from Rensselaer Polytechnic Institute, Troy, N. Y.; and College of the City of New York.

S E N I O R S



LILLIAN ORETHA BELLAMY

Surgoinsville, Tennessee

English, Social Science

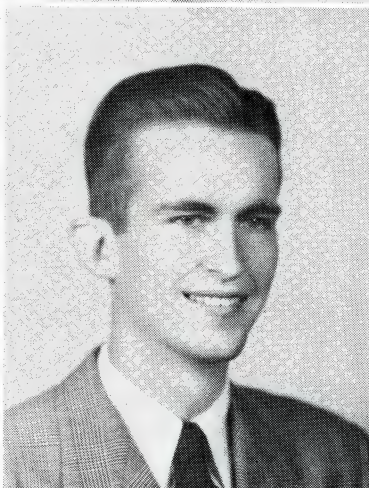
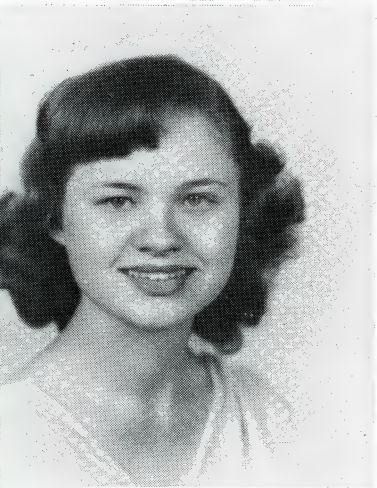
Transfer from Tusculum College; Phil Alpha Sorority '46-'47; Y.W.C.A. '45-'47; A.C.E. '45-'47; Honor Roll.

LOUISE BERRY

Bulls Gap, Tennessee

Spanish, Home Economics, English

Home Economics Club '43-'47.



WINIFRED BIRD

Greeneville, Tennessee

Home Economics, Social Science

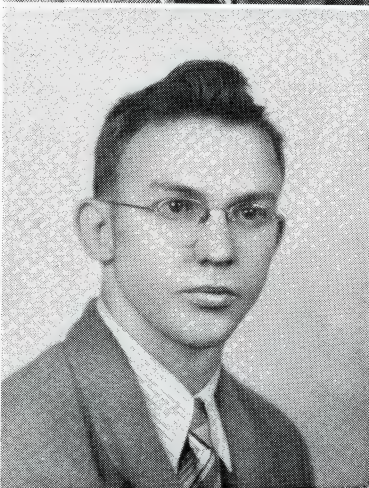
Transfer from Berea College; Home Economics Club '45-'47; Home Management House '46; Glee Club '45-'46; Y.W.C.A. '45-'47.

THOMAS BOLES

Greeneville, Tennessee

Music, English

Glee Club '41-'43, '46-'47; President '46-'47; Choir '41-'43; Accompanist '46-'47; F.T.A. '42-'43; Mu Epsilon Nu Fraternity '46-'47; Footlight Players '42-'43, '46-'47; Band '41-'43, '46-'47; Orchestra '41-'43, '46-'47; Pestalozzian Society '41-'43.



EDNA KATHLEEN BROYLES

Chuckey, Tennessee

Business Administration, English, Physical Education and Health

Intramurals '43-'44; Commuters Club '44-'45.

NATHANIEL BURCHFIELD

Elizabethton, Tennessee

Industrial Arts, Health, Physical Education

Glee Club '43-'47, ETS Letter; Choir '45-'47, ETS Letter.

S E N I O R S

MARGARET ANNE BYRD

Johnson City, Tennessee

History, Geography

Band '45-'47; Home Economics Club '44-'47;
Commuters Club '44-'47.



MARY MARJORIE CARROLL

Fordtown, Tennessee

English, History

B.S.U. '43-'47, Choister '46-'47, President
'44-'45; Canterbury Club '45-'47, Secretary
'46-'47; Y.W.C.A. '43-'47.

MILDRED CATES

Hampton, Tennessee

Home Economics, English, History

Home Economics Club '43-'47; B.S.U. '44-'47;
Commuters Club '44-'46.



HELEN COOK

Loudon, Tennessee

Home Economics, Social Studies

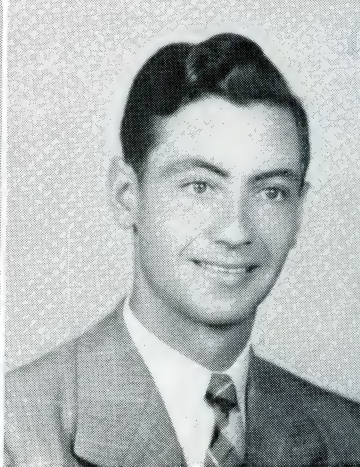
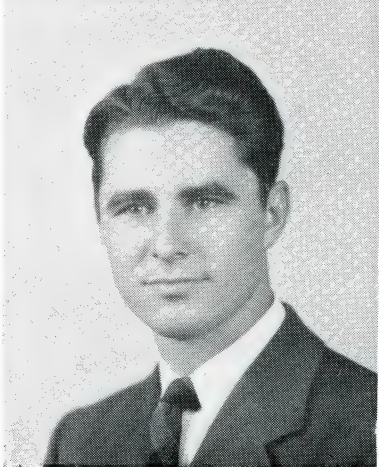
Transfer from University of Tennessee; Band
'46-'47; A.C.E. '46-'47.

HARRY CORRELL

Kingsport, Tennessee

English, Social Studies

Transfer from Emmanuel College and
Holmes Bible College; **Buccaneer** Editor
'46-'47; Glee Club '39-'44, '45-'47; Vice-
President '46-'47; Choir '39-'44, '45-'47; In-
ternations Relations Club '46-'47; Who's
Who '46-'47; Best Personality Boy '46-'47.



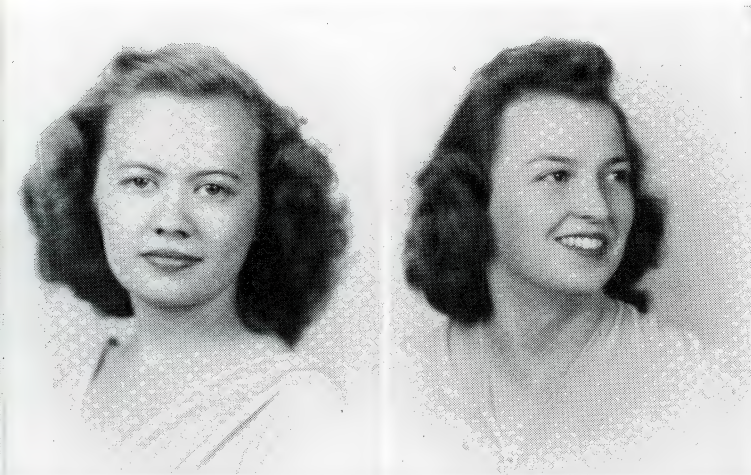
LAWRENCE COX

Jonesboro, Tennessee

Industrial Arts, Science

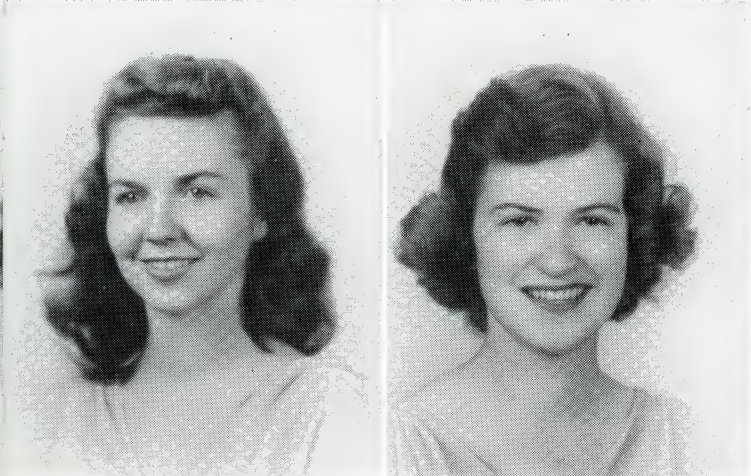
Phi Beta Chi '46-'47.

O F 1 9 4 7



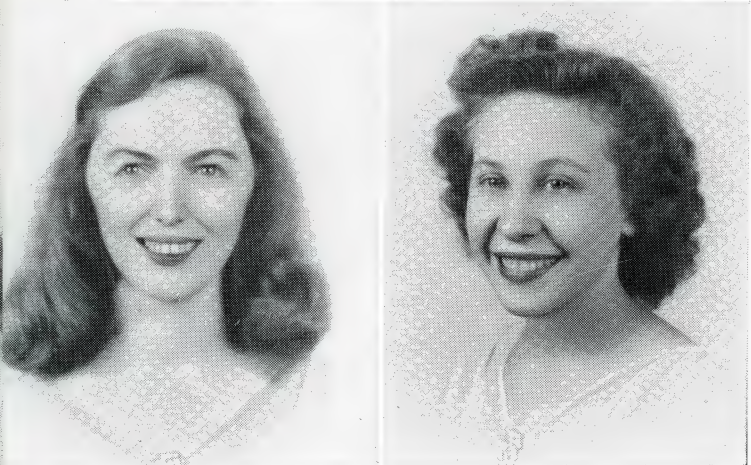
MARY CREWS
Greeneville, Tennessee
Business Administration, English, Spanish
Transfer from Tusculum College; Camera Club '46-'47; Spanish Club '46-'47.

HELEN VIRGINIA DEAKINS
Jonesboro, Tennessee
Home Economics, English
Transfer from University of Tennessee; Sigma Omega Sorority '42-'44, '46-'47, Second Vice-President '43-'44; Home Economics Club '42-'44; Intramurals '42-44.



JANETTE DIEHL
Jonesboro, Tennessee
English, Spanish, Art
Chorus '43-'44; Intramurals '44-'45; Commuters Club '44-'45; **Buccaneer Staff** '46-'47.

CHARLENE DOBY
St. Paul, Virginia
History, English
Pi Sigma Sorority '44-'47, Secretary '45-'46, Treasurer '46-'47; Leadership Club '44-'47, President '46-'47; F. T. A. '45-'47, Secretary F.T.A. '45-'47, Secretary '46-'47; Y.W.C.A. '46-'47; Y.W.C.A. '43-'46; Intramurals '43-'47, TS Award '45-'46; Chorus '43-'44; United Student Representative '45-'46; **Buccaneer Staff** '46-'47.



BETTY DEUEL COCK ELAM
Kingsport, Tennessee
Home Economics, Psychology
Transfer from Farmville State Teachers College.

JULIA KING ENGLISH
Ashford, North Carolina
Business Education, English, History
Footlight Players, '46-'47; Commerce Club '46-'47.

S E N I O R S

LAURA FARTHING
Butler, Tennessee
English, Social Studies

Transfer from Georgetown College; Miracle Book Club '45-'47; Baptist Student Union '45-'47, President '46-'47; Central Religious Council '44-'47, Pres. '45-'46; Y.W.C.A. '45-'47; International Relations Club '46-'47; United Student Body '46-'47; Honor Roll.

HARRY N. FORTUNE

Erwin, Tennessee
History, English

International Relations Club '46-'47; Senior Class President '46-'47.

EULA FUDGE

Surgoinsville, Tennessee
Business Education, Social Science

Y.W.C.A. '44-'47, Vice-Pres. '46-'47; Miracle Book Club '44-'47, Vice-Pres. '45-'46; Beta Epsilon Kappa '45-'47, Vice-Pres. '46-'47; Footlight Players '46-'47; Canterbury Club '45-'47.

ROSALIND GILSDORF

Kingsport, Tennessee
English, History

Sigma Omega Sorority '43-'47; Canterbury Club '45-'47, Vice-Pres. '46-'47; Y.W.C.A. '43-'46.

JESSIE M. GOODMAN

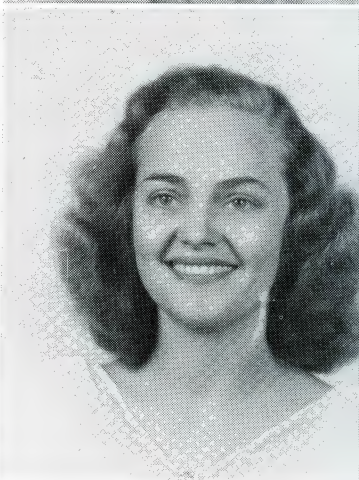
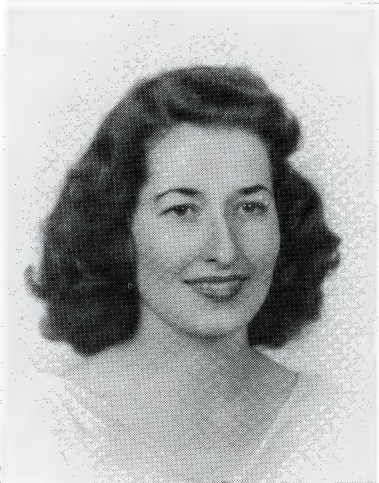
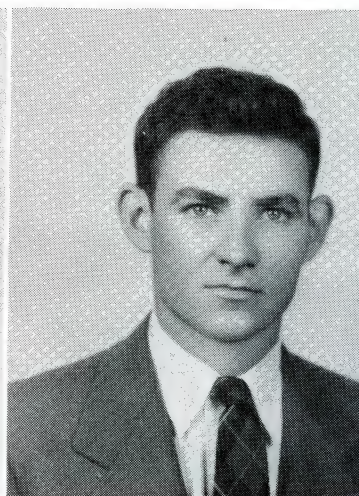
Surgoinsville, Tennessee
English, Social Studies

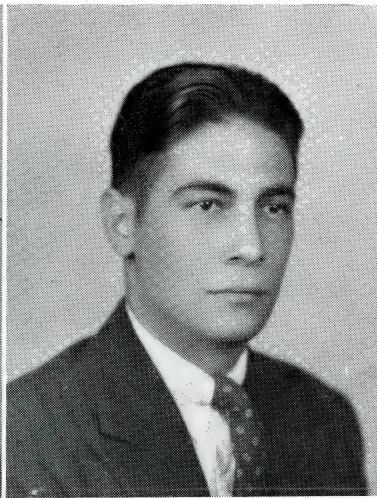
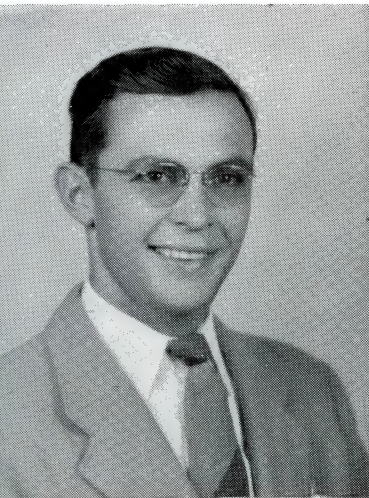
Phi Alpha Sorority '45-'47, Secretary '46-'47; A.C.E. '45-'46; Wesleyan Foundation '44-'46, Reporter '45, Vice-Pres. '46.

LEAH FLEENOR GREEN

Bluff City, Tennessee
Home Economics, Social Studies

Sigma Omega Sorority '44-'47; Home Economics Club '46-'47; Campus Beauty '45-'46.





BEN L. GREENE

Rogersville, Tennessee

Science, Mathematics, Industrial Arts

Transferred from L.M.U. and University of South Carolina.

"T" Club '41-'42, '46-'47, Sec.-Treas. '46-'47; Pestalozzians, '41-'42.

WILLIAM MARION GROSECLOSE, JR.

New Market, Tennessee

Business Administration & Social Science

Transferred from Carson-Newman College.

Mu Epsilon Nu Fraternity '45-'47; United Student Body '46-'47.



MARY SUE GROSECLOSE

Kingsport, Tennessee

Health & Phys. Ed., English, Spanish

Y.W.C.A. '43-'46; Intramurals '43-'47, Asst. Manager '45-'46, Manager '46-'47; Leadership Club '44-'47; **Buccaneer Staff** '46-'47;

F.T.A. '43-'47, Vice-Pres. '45, Reporter '46; **Tennessee Collegian Staff** '45-'47; TS Award '44; "T" Award '45; International Relations Club '45-'47; Pi Sigma Sorority '43-'47, Treasurer '44-'45, Pres. '45-'46; United Student Body '45; Carter Hall Student Government '45; Who's Who '45-'47; Camera Club '46-'47; Best All-round Girl '46-'47.

SAMUEL T. HAMMER

Boyd's Creek, Tennessee

Science, English, History

"T" Club '40-'42, '45-'47; Pestalozzians '39-41.

CORA E. HATFIELD

Harriman, Tennessee

Social Science, English

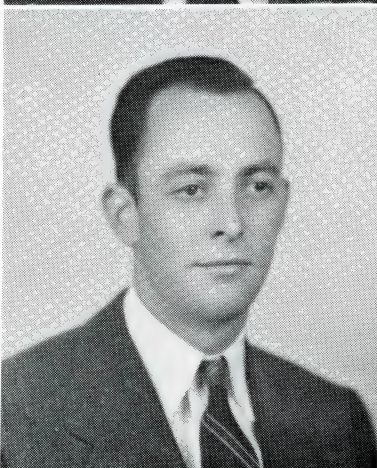
CAY HAUN

LaFollette, Tennessee

Social Science, Industrial Arts

Transfer from L.M.U. and Cumberland.

Baseball '40-'41, '45-'47; Pestalozzians '40-'42; "T" Club '41-'42, '45-'47.



S E N I O R S

EARL ERIC HENDERSON, JR.

Bedford, Indiana

English, History

Transfer from Milligan College & University of the South.

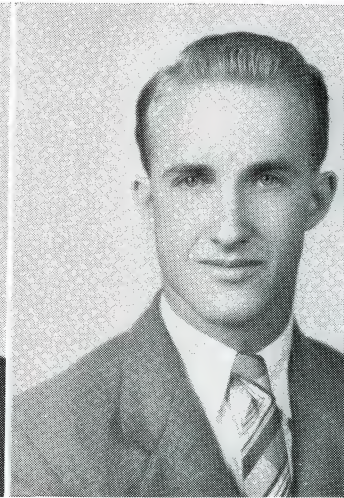
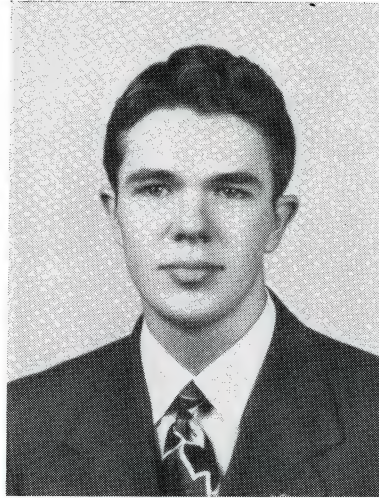
International Relations Club '46-'47; B.S.U. '46-'47; Band '44-'45.

JOHN HILLENBRAND

Elizabethton, Tennessee

Industrial Arts, Social Science

Football '40-'41; Industrial Arts Club; United Student Body '46-'47; Intramurals Manager '42-'43.



DENNIS EVANS HILTON

Johnson City, Tennessee

Industrial Arts, English

Phi Beta Chi '46-'47, Vice-Pres. '46-'47; Footlight Players '46-'47; Intra-Fraternity Council '46-'47; Industrial Arts Club '46-'47; Honor Roll.

ORAL RUTH HULLETTE

Kingsport, Tennessee

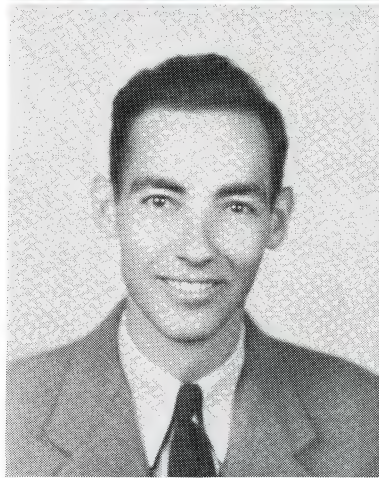
English, Social Science

ANNA MARIE IRISH

Johnson City, Tennessee

Home Economics, History

Pi Sigma Sorority '43-'47, Treasurer '46, Pres. '47; Home Economics Club '43-'47, Reporter '45; Future Teachers of America '43-'47, Secretary '44; Leadership Club '43-'47, Pres. '44; Intramurals '43-'47; International Relations Club '44-'47, Reporter '45, Secretary '46; Footlight Players '44-'47, Sec. '44, Pres. '45; Commuters Club '44-'47, Vice-Pres. '45; B.S.U. '45; Pres. of Junior Class; **Buccaneer Staff** '45-'47; TS Award '46; **Who's Who** '46-'47 Cheerleader '45; Best Personality '46-'47; Honor Roll.



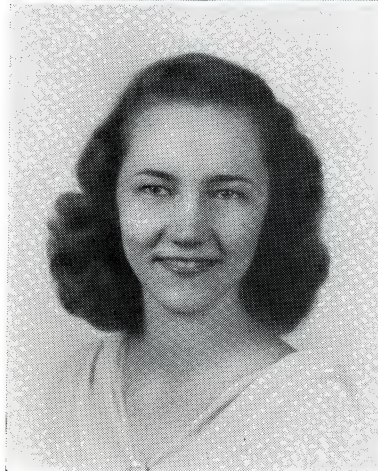
SUE IVENS

Madisonville, Tennessee

Chemistry, English

Transfer from Hiwassee College

Y.W.C.A. '45-'46; Wesleyan Foundation '46-'47, Vice-Pres. '47; Intramurals '45-'46; Footlight Players '46-'47; Miracle Book Club '46-'47; Canterbury Club '46-'47.

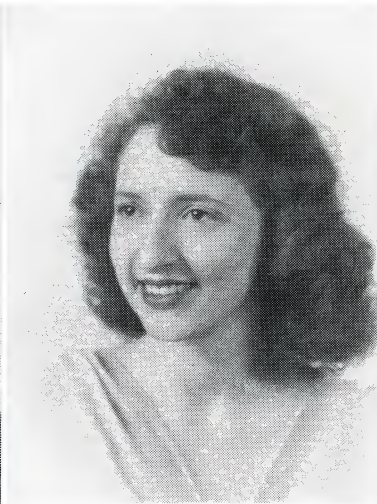




C. V. JAYNE, JR.

Johnson City, Tennessee
Chemistry, Mathematics

Orchestra, '42-'43; Band '42-'43; Scholarship Award '44-'45; International Relations Club '45-'47.



MARTHA WILL JONES

Jonesboro, Tennessee
Social Science, English, Bus. Adm.

International Relations Club '46-'47; Beta Epsilon Kappa '46-'47; Y.W.C.A. '43-'46; Canterbury Club '45-'47; Miracle Book Club '45-'47; Wesleyan Foundation '45-'47; Honor Roll.



TYSON LELAND JONES

Greeneville, Tennessee
History, English

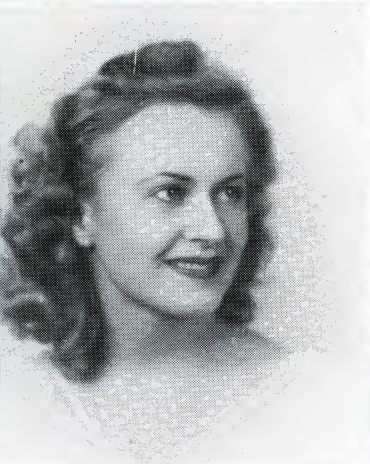
"T" Club '38-'39, '45-'47; International Relations Club '45-'47, President '46-'47; Honor Roll.



MARGARET VIRGINIA LAMIE

Erwin, Tennessee
Home Economics, English

Transfer from Tusculum College
Sigma Omega Sorority '44-'47; Home Economics Club '46-'47; International Relations Club '46-'47; Orchestra '46-'47; **Tennessee Collegian** '46-'47.



DORIS ELAINE LARIMER

Jonesboro, Tennessee
English, Art

Glee Club '46-'47; A.C.E., Treasurer '46-'47; B.S.U., Secretary '46-'47; Miracle Book Club; Y.W.C.A. '43-'46; Commuters Club '45-'46.



D. M. LEWIS

Elizabethton, Tennessee

Social Studies, Physical Education

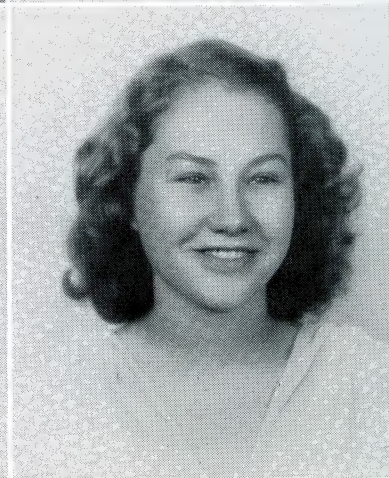
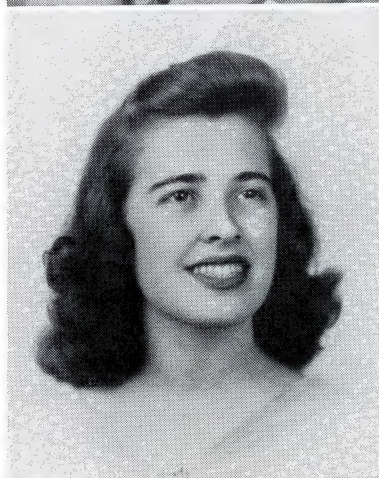
S E N I O R S

WILLIAM E. LYLE, JR.
Johnson City, Tennessee
Industrial Arts, English
Buccaneer Staff '46-'47.



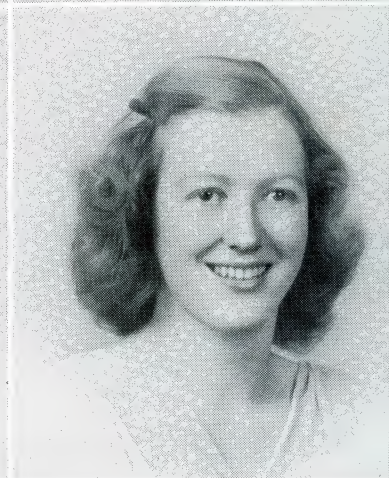
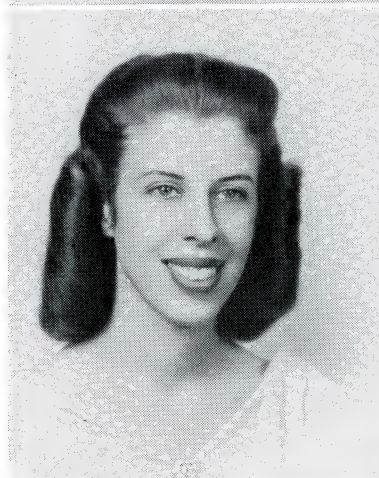
AGNES MAHONEY
Limestone, Tennessee
Business Education, Social Studies
 Central Religious Council '44-'47, Vice-Pres. '44-'45, Sec. '46-'47; Miracle Book Club '43-'47, Pres. '45-'47; Y.W.C.A. '43-'47, Pres. '45-'46, Reporter '46-'47; Wesleyan Foundation '43-'46, Treasurer '44-'45, Pres. '45-'46; Beta Epsilon Kappa '44-'47; Baptist Student Union '46-'47; A.C.E. '44-'45; **Who's Who** '45-'47; Honor Roll.

MARJORIE MAHONEY
Johnson City, Tennessee
Social Science, Music
 Phi Alpha Sorority '45-'47; Commuters Club '44-'46; A.C.E. '45-'47, Secretary '46-'47; Wesleyan Foundation '44-'47, Secretary '46-'47; Central Religious Council '45-'46.

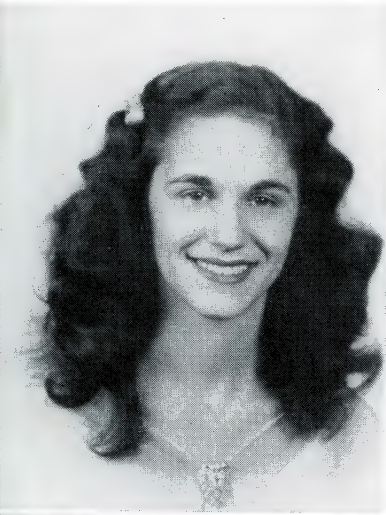


BERTIE M. MASSENGIL
Russellville, Tennessee
Science, Mathematics
 Transfer from Carson-Newman.
 Footlight Players '45-'47; Y.W.C.A. '43-'47; Miracle Book Club '45-'47; B.S.U. '43-'47; Intramurals '43-'45; Science Club '43-'45.

MARIE BIBLE McFARLAND
Mosheim, Tennessee
Business Education, Home Economics
 Transfer from Milligan College.
 Phi Alpha Sorority '46-'47; Wesleyan Foundation '46-'47.



MARTHA McIVER
Marion, North Carolina
Home Economics, English
 Home Economics Club '43-'47, Vice-Pres. '46-'47; Y.W.C.A. '43-'47; Intramurals '43-'47; Pi Sigma Sorority '46-'47.



JUNE MCKAY

Chuckey, Tennessee

Home Economics, English, Phys. Ed.

Commuters Club '45-'47; Glee Club '44-'47; Home Economics Club '45-'46; Leadership Club '45-'46; Intramurals '44-'46; Campus Beauty '43-'44, '45-'46.

MARION VIRGINIA McLAIN

Elizabethton, Tennessee

History, English

Transfer from Madison College, Harrisonburg, Va.

Sigma Omega Sorority '45-'47; Reporter '46-'47; Band Sponsor '46-'47; Commuters Club '45-'47.



IRENE McNABB

Newport, Tennessee

Physical Education, English

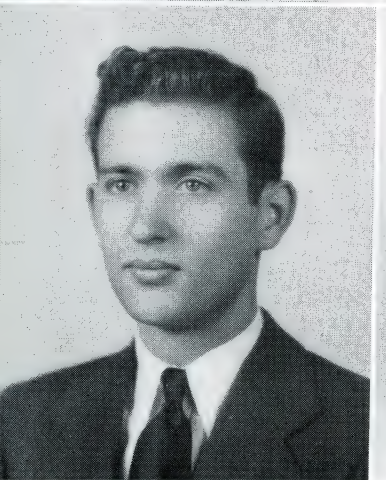
Y.W.C.A. '43-'45; A.C.E. '43-'46, Sec. '45-'46, Vice-Pres. '46; Phi Alpha Sorority '44-'47, Reporter '45-'46, Treas. '46-'47; Leadership Club '43-'47; B.S.U. '43-'47; Carter Hall Student Government Pres. '45-'46; Intramurals '43-'47.

CHARLCY WAYNE McNEIL

Knoxville, Tennessee

English, Home Economics

Transfer from University of Tennessee A.C.E. '46-'47; B.S.U. '46-'47; Miracle Book Club '46-'47; Y.W.C.A. '46-'47.



LAWRENCE MOFFATT

Johnson City, Tennessee

Science, Modern Languages, History

Thaelian Society '44-'45, Pres '44-'45; Science Club '44-'45; **Tennessee Collegian** '45-'47; **Buccaneer Staff** '46-'47; International Relations Club '46-'47; **Who's Who** '46-'47; Footlight Players, Pres. '46-'47.

DORIS MOODY

Erwin, Tennessee

Business Education, Social Science

Transfer from University of Tennessee. Y.W.C.A. '43-'46; Pi Sigma Sorority '43-'47; Carter Hall Student Gov'n't., Sec., '45-'46; Beta Epsilon Kappa, Vice-Pres. '45-'46, Pres. '46-'47; **Buccaneer Staff** '45-'46.

S E N I O R S

RUTH COOK MORGAN

Erwin, Tennessee

Home Economics, English

Home Economics Club '44-'47; Y.W.C.A. '44-'47.

MARIAN NAVE

Johnson City, Tennessee

English, History

Pi Sigma Sorority '43, '46-'47; **Buccaneer Staff** '46-'47; Camera Club '46-'47; A.C.E. '46-'47; Secretary of Senior Class '46-'47; Footlight Players '45-'47.

JOHN T. NAVE

Mountain City, Tennessee

Industrial Arts, Social Science

Transfer from University of Tennessee.

Baseball '42-'43, '45-'47; "T" Club '46-'47;

Glee Club '42, '46-'47; **Tennessee Collegian**

Editor '46-'47.

JOE ANNE OTTINGER

Greeneville, Tennessee

English, Social Science, Phys. Ed.

Phi Alpha Sorority '45-'47; Y.W.C.A. '43-'46; B.S.U. '43-'45; Miracle Book Club '43-'45; Intramurals '43-'47; A.C.E. '44-'47.

JOANNE HYDER PAINTER

Limestone, Tennessee

Business Education, Health & Phys. Ed.

Glee Club '44-'47; Commuters Club '44-'46; Leadership Club '46-'47; Beta Epsilon Kappa '45-'47, Secretary '46-'47; Intramurals '44-'47.

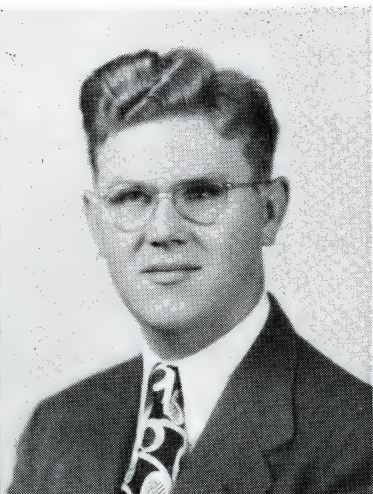
PRENTICE EDWARD PARKER, JR.

Johnson City, Tennessee

Science, Social Science



O F 1 9 4 7



CHARLES WARREN PEARSON

Lee Valley, Tennessee
English, Physical Education, Health

Transfer from Berry College
B.S.U. '44-'47, Pres. '45-'46, Vice-Pres. '46-'47; Mu Epsilon Nu '45-'47, Pres. '46-'47; Choir '45-'47; Glee Club '45-'47 Camera Club '45-'47, Sec. '45-'46; Miracle Book Club '45-46.

CHARLES PETERSON

Erwin, Tennessee
English, Science

Glee Club '40-'41.



WILBY E. PHILLIPI

Mountain City, Tennessee

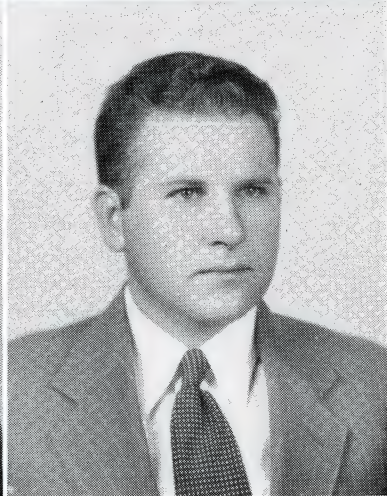
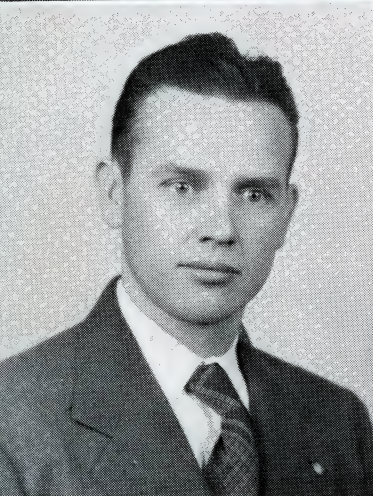
Social Science, Phys. Ed. & Health
Veterans' Club '46-'47.

TERRELL JARVIS PONDER

White Pine, Tennessee

Industrial Arts, Physical Education, History

Baseball '41-'42, '45-'47, Capt. '42-'46; Football '41-'42; Intramurals '41-'42; International Relations Club '46-'47, Vice-Pres. '46-'47; Sec.-Treas. of United Student Body '46-'47; **Who's Who** '46-'47; Mu Epsilon Nu; Nu Sigma Alpha; "T" Club '41-'42, '46-'47, Pres. '46-'47.



ELDON E. POSEY

Seymour, Tennessee

Chemistry, Mathematics, Physics

Transfer from Cumberland College, Kentucky.
Pestalozzians '40-'41.

MONTIE H. POTTER

Unicoi, Tennessee

History, Social Science, English

International Relations Club '45-'47.

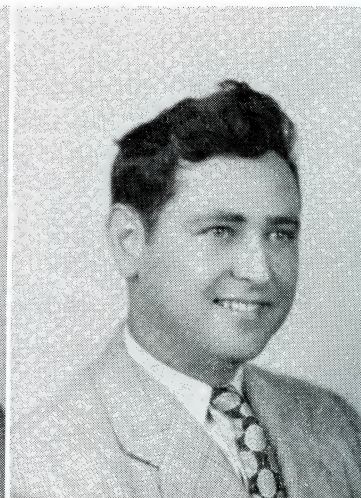
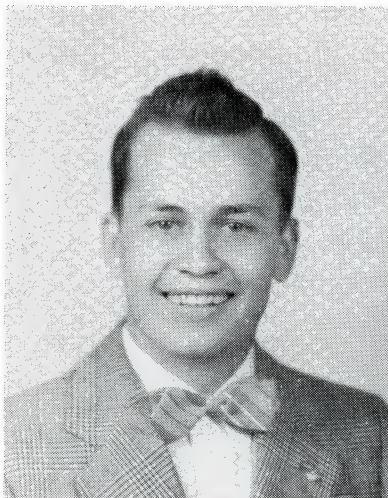
S E N I O R S

ZEB MARSHALL PRESNELL

Elizabethton, Tennessee

Science, Health & Phys. Ed., English

Transfer from Lincoln Memorial University
Pres. of United Student Body '46-'47; "T"
Club '45-'47, Vice-Pres. '46-'47; International
Relations Club '46-'47; Nu Sigma Aluha
'46-'47; B.S.U. '46-'47 Best All-Round Boy
'46-'47.



FRANK RENFRO

Johnson City, Tennessee

Social Science, English

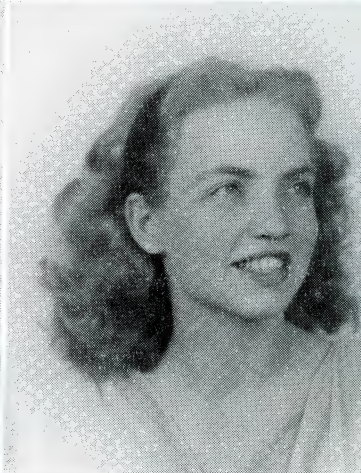
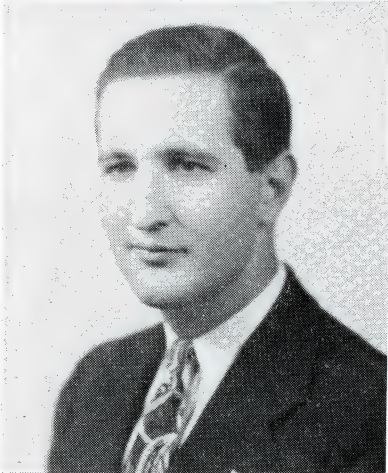
Transfer from Brevard College.
Forensic Club; International Relations Club
Vice-Pres. '39; Track Team '38-'39.

RICHARD ROSSON

Jonesboro, Tennessee

English, History

Band '41-'43; Glee Club '41-'43, '46-'47;
Manager of Choir '46-'47.



CHARLOTTE ELIZABETH ROWE

Johnson City, Tennessee

Home Economics, History, Science

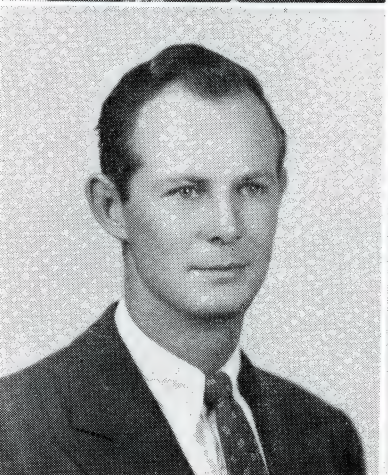
International Relations Club '45-'47; Home
Economics Club '44-'47, Sec. '45-'46, Pres.
'46-'47; Pi Sigma Sorority '44-'47; Commut-
ers Club '44-'46; Future Teachers of Amer-
ica '44-'47, Vice-Pres. '45-'46, Treas. '46-'47;
Buccaneer Staff '46-'47; **Tennessee Colleg-
ian Staff** '45-'47; Sec.-Treas. of Sophomore
Class; Scholarship Award '45-'46; **Who's
Who** '46-'47; Cheerleader '45-'47; Campus
Beauty '46-'47; Honor Roll.

HOBART L. RUSSELL, JR.

Jonesville, Virginia

Social Studies, English

Transfer from Hiwassee
Phi Beta Chi '46-'47; "T" Club '42, '46-'47.

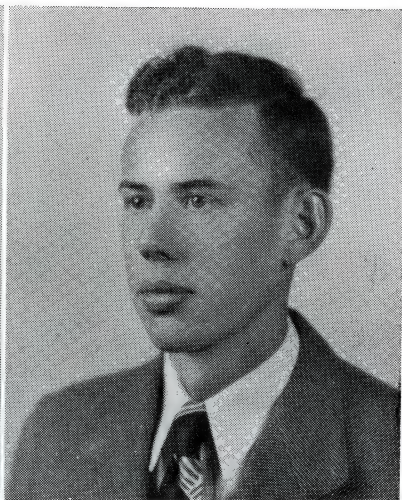


JOYCE SHAW

Tellico Plains, Tennessee

Health & Phys. Ed., Social Studies

Y.W.C.A. '43-'46; Leadership Club '44-'47,
Sec. '46-'47; Future Teachers of America
'44-'47, Pres. '46-'47; Camera Club '46-'47;
Intramurals '43-'47; Wesleyan Foundation
'43-'44.



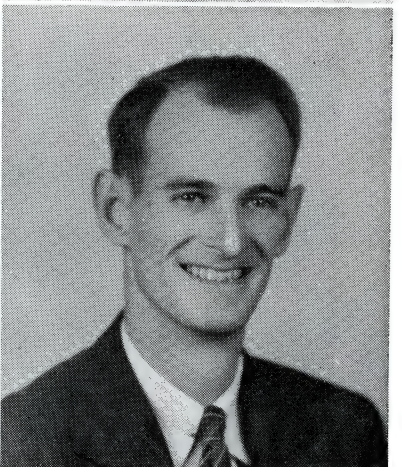
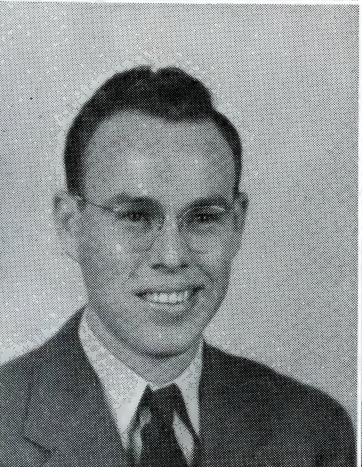
GRANVILLE SHIELDS
Sevierville, Tennessee
Business Education, Social Science
Transfer from Milligan College

WILLIAM SLEMMONS, JR.
Johnson City, Tennessee
Social Science, History
International Relations Club '46-'47.



GRACE SMELCER
Dandridge, Tennessee
Social Science, English, Health & Phy. Ed.
International Relations Club '46-'47; A.C.E.
'46-'47; Wesleyan Foundation '46-'47; Hon-
or Roll.

OLIVA CAREY SMITH
Church Hill, Tennessee
Science, Social Studies
Transfer from Tusculum College
Vice-Pres. of United Student Body '46-'47.



ROY SMITH
Rogersville, Tennessee
Social Science, Industrial Arts

FRANCIS SPICER
Elizabethton, Tennessee
Health & Phys. Ed., Social Science
Footlight Players '46-'47, Business Manager
'46-'47.

S E N I O R S

HARLEY H. STEPHENS

Lafollette, Tennessee

Biology, English, Mathematics

Pestalozzians '37-'38; Glee Club '37-'38; Mu Epsilon Nu '46-'47; Rural Life Club '37-'38.

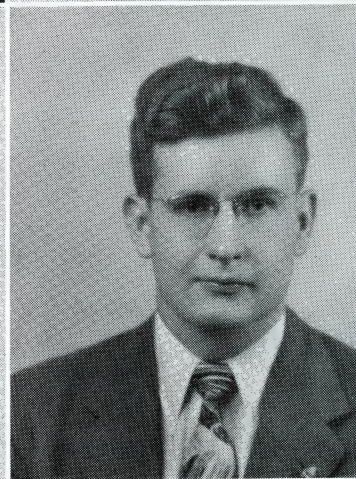


HELEN STILL

Johnson City, Tennessee

Modern Languages, History

Footlight Players '44-'47; Glee Club '46-'47; International Relations Club '45-'47, Sec. '46-'47; Commuters Club '44-'46, Sec. '45-'46.



FREDA TALLENT

Madisonville, Tennessee

Science, English

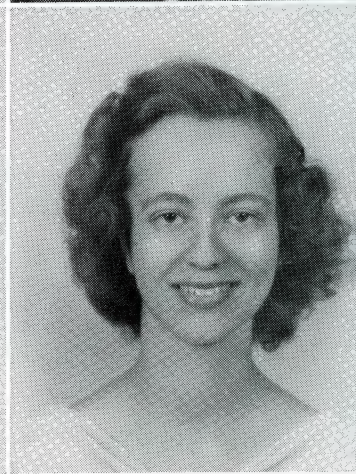
Transfer from Hiwassee College
Pi Sigma Sorority '45-'47, Vice-Pres. '46-'47;
International Relations Club '46-'47; Leadership Club '46-'47; Wesleyan Foundation '45-'47; Intramurals '45-'47; Y.W.C.A. '45-'46; Canterbury Club '46-'47.

FRANK A. TANNEWITZ, JR.

Johnson City, Tennessee

Business Administration, History

Treasurer of Senior Class; Beta Epsilon Kappa, Treasurer '46-'47; Tennis Team '41; "T" Club '41-'42, '46-'47; International Relations Club '46-'47.



DELTA THOMAS

Sweetwater, Tennessee

English, Physical Education

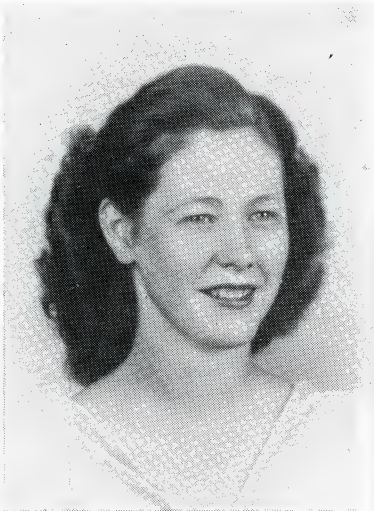
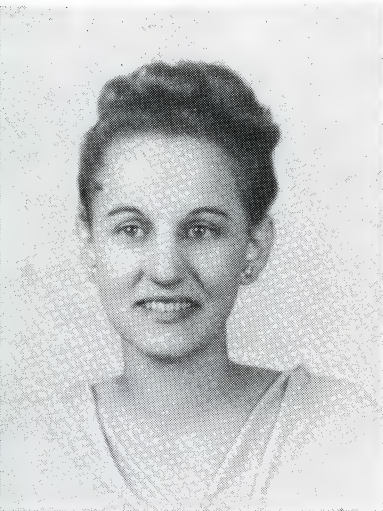
Transfer from Hiwassee College
Leadership Club '46-'47; Canterbury Club '46-'47; Footlight Players '46-'47; Phi Alpha Sorority '46-'47; Home Economics Club '46-'47.

GERTRUDE TONCRAY

Johnson City, Tennessee

English, Business Education

Transfer from Bob Jones College
International Relations Club '46-'47; Beta Epsilon Kappa '46-'47.



HELEN WADELL

Greeneville, Tennessee

Home Economics, Social Science

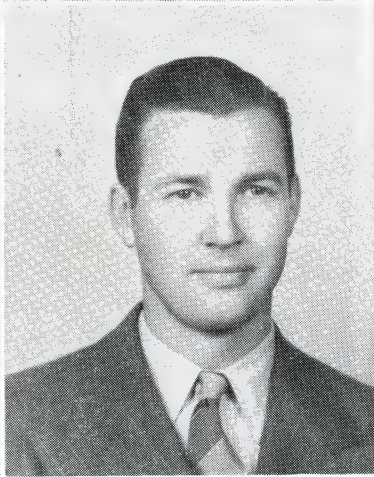
Transfer from Tennessee Wesleyan
Christian Service Club '43-'45; International
Relations Club '43-'45; Z.M.E. Sorority '43-
'45; Y.W.C.A. '43-'47; Wesleyan Founda-
tion; Home Economics Club '43-'47; Bible
Class Intramurals.

JEAN WARDREP

Jefferson City, Tennessee

Science, Education

Transfer from Carson-Newman
Calliopean Literary Society; Vice-Pres. of
Eagle Club '45-'46; President of Town Stu-
dents Government '46-'47.



ELEANOR WARREN

Glade Springs, Virginia

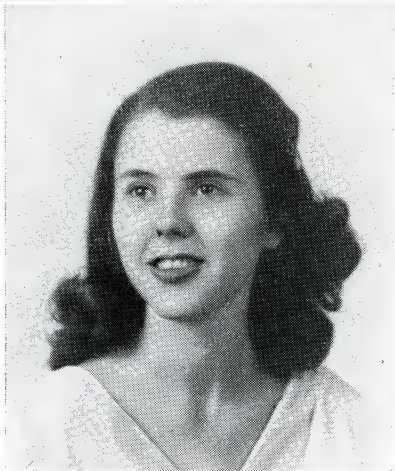
Social Studies, English

Transfer from Emory & Henry, Emory, Va.
Pi Sigma Sorority '46-'47; Camera Club '46-
'47; A.C.E. '46-'47; **Buccaneer Staff** '46-'47.

CHRISTOPHER C. WEST

Helenwood, Tennessee

English, Social Studies, Health & Phys. Ed.



BOBBIE RUTH WILLIAMS

Johnson City, Tennessee

English, Social Studies, Health and Phy. Ed.

International Relations Club '45-'47; Canter-
bury Club '45-'47; Central Religious Council
'46-'47; Glee Club '43-'44, '46-'47; Orchestra
'43-'44, '43-47, Honor Roll.

S E N I O R S

KATHRYN WILLIAMS

Etowah, Tennessee

English, History

Glee Club '46-'47; International Relations Club '46-'47; Y.W.C.A.; B.S.U. '46-'47; Honor Roll.



WILLARD R. WILLIS

Kyles Ford, Tennessee

Social Science, Biology, English

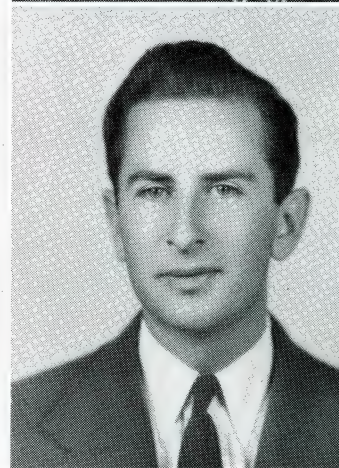
International Relations Club '46-'47.

HELEN NUNEZ WILSON

Johnson City, Tennessee

Home Economics, Social Science, Bus. Adm.

Transfer from University of Tennessee
Home Economics Club '42-'44; Beta Epsilon Kappa '43-'44; International Relations Club '46-'47; A.C.E. '46-'47; Newman Club, House Council Member for Old Blount Hall.



LELAND CRAIG WILSON

Johnson City, Tennessee

Social Science, English

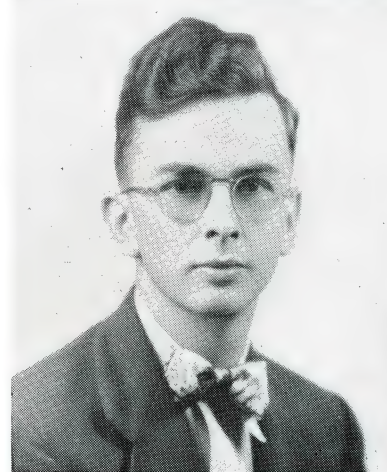
International Relations Club '46-'47.

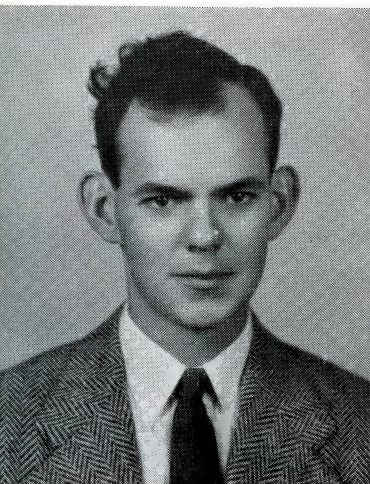
REID WILSON

Johnson City, Tennessee

English, Social Science

Wesleyan Foundation '44-'47; Mu Epsilon Nu '44-'45; Nu Sigma Alpha '46; Choir '44-'45; Chorus '44-'45.





WILLIAM K. WITHERSPOON
Johnson City, Tennessee
Chemistry, Mathematics, Physics
Transfer from Phillips University, Enid, Okl.
and Milligan College.

FLORENCE COWARD WOODWARD
Erwin, Tennessee
English, Social Science, Geography

NOT PICTURED

Allen, Ruby
Asbury, Johnnye
Asbury, Mary Lee
Barkley, William Todd
Carey, James Arden
Carpenter, Allred W.
Dewitt, Ruth
Dosser, Sarah
Fleming, Charles
Hale, Edward
Howard, Robert W.
Jenkins, Jemima
Johnson, Ann Cable
Leach, Edna
Morell, Wanda
Myers, Kathleen
Osborne, Georgia
Overby, Lynwood H.
Price, James Warren
Rasar, Ernest
Reece, Norva
Sexton, Melvin C.
Sullivan, William
Wine, Jacob
Winter, Wilbert
Young, Malone

Elizabethton, Tennessee
Powell Station, Tennessee
Powell Station, Tennessee
Johnson City, Tennessee
Goin, Tennessee
Erwin, Tennessee
Greeneville, Tennessee
Johnson City, Tennessee
Johnson City, Tennessee
Memphis, Tennessee
Southern Pines, North Carolina
Johnson City, Tennessee
Chuckey, Tennessee
Jonesboro, Tennessee
Bulls Gap, Tennessee
Greeneville, Tennessee
Dungannon, Virginia
Kingsport, Tennessee
Harlingen, Texas
Elizabethton, Tennessee
Johnson City, Tennessee
Oneida, Tennessee
Helbiana, Kentucky
Johnson City, Tennessee
Elizabethton, Tennessee



JUNIOR CLASS OFFICERS

President _____ DON SABIN

Vice-President _____ LOUISE LYLE

Secretary _____ PEREDA RICE

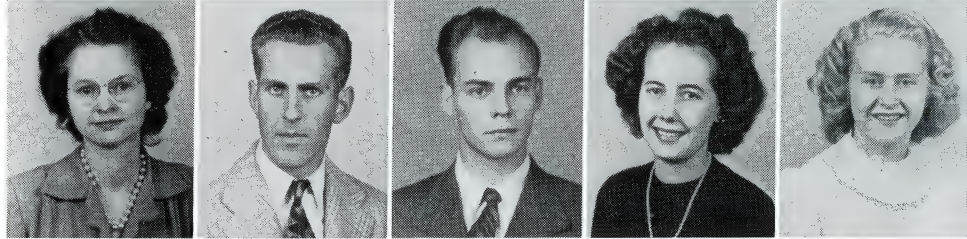
Treasurer _____ KEITH ROBERTS

JUNIORS

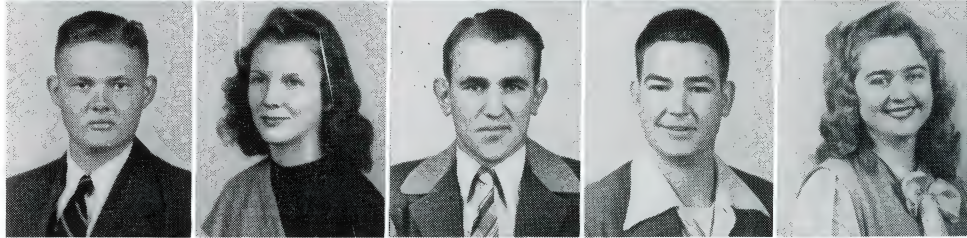
Virginia Anderson
 William P Armstrong
 Dorothy Bales
 Jo Bales
 Margaret Banks



Virginia Barnes
 John Barr
 Millard Bartlett
 Mary Montgomery Beil
 Carolyn Bickley



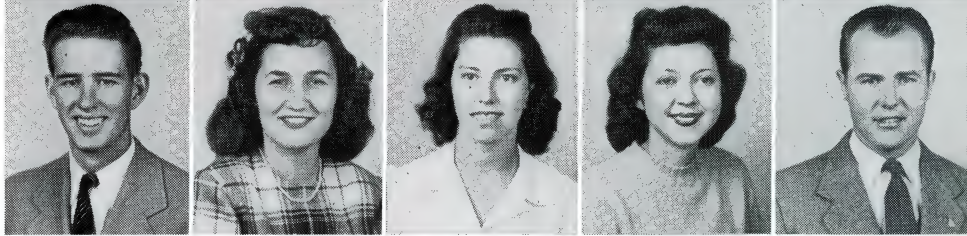
Bill Briggs
 Betty Browning
 Chester Broyles
 William Ralph Buher
 Vivian Burnett



Thelma Burchfield
 Dorothy Bussell
 Eloise Campbell
 Joan Campbell
 Joan Cardwell



Robert E. Cardwell, Jr.
 Betsy Cheek
 Eileen Corzine
 Betty Cox
 Jack M. Cox



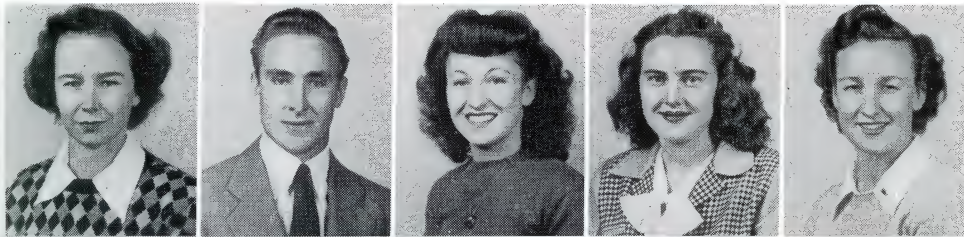
Robert Cross
 Dorothy Crouch
 Johnnye Curtis
 Ivah Davis
 Emert H. Dickey, Jr.



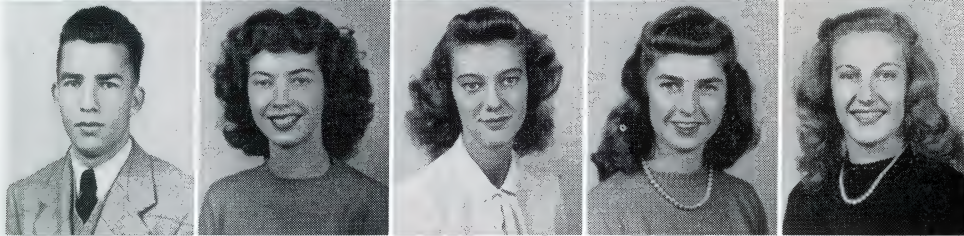
Norma Jean Dillow
 Ellen Driskill
 Josephine Farnsworth
 Robert Freeman
 Minnis Freshour



JUNIORS



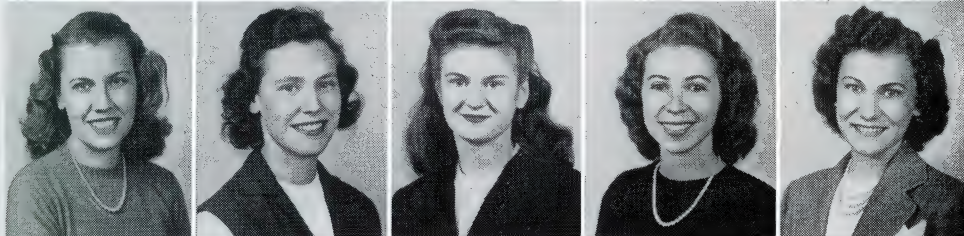
Elaine Garland
Frank Gilbert
Mildred Gilbert
Mattlee Gilliam
Margaret Gilliland



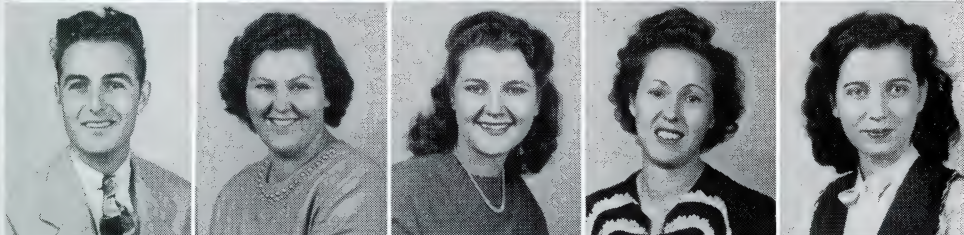
Quinton Gobble
LaVerne Hale
Nancy Harrell
Betty Lou Henry
Betty Sue Henry



Margaret Hensley
Eric Herrin
Bill Keezel
William W. Kimsey
Fred King



Juanita Larkin
Dorothy Lee
Mary Jo Lee
Allilion Lewis
Lakie Lewis



James M. Long
Louise Lyle
Eileen Martin
Una McNeese
Adelaide Miller



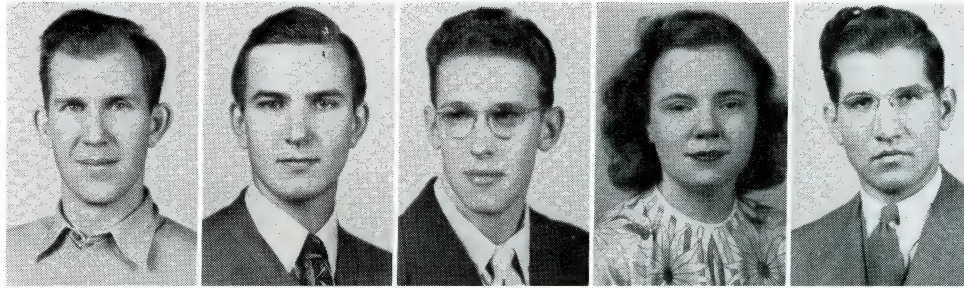
Clara Sue Nanney
Bobbie Jeanne Norton
Lawrence Page
Guy Parman
Virginia Patton



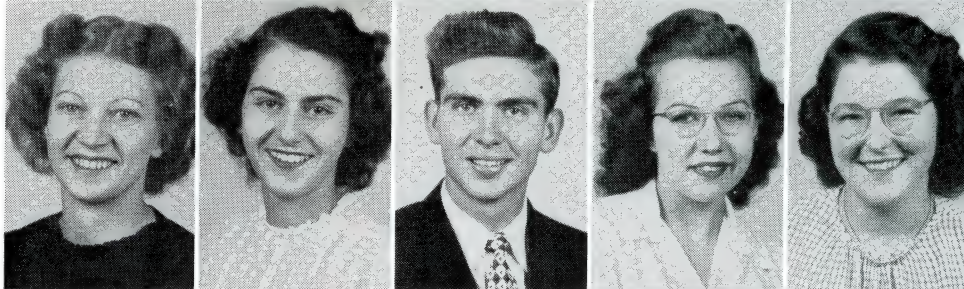
Robert J. Potter
Kathryn Price
Joyce Reynolds
Pereda Rice
Frances Roberts

JUNIORS

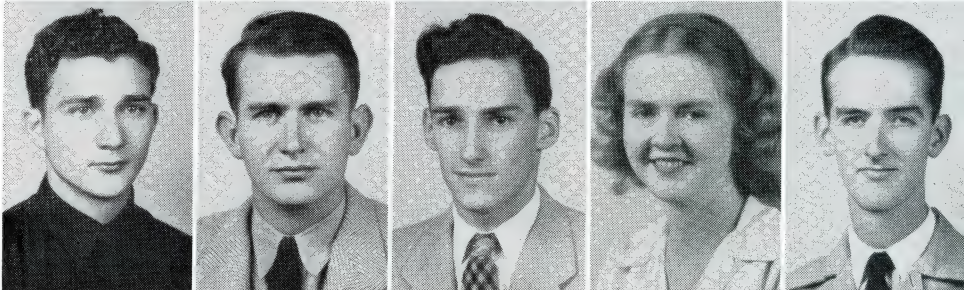
Keith Roberts
 Don Sabin
 Don Shetler
 Virginia Siler
 Howard B. Simmons



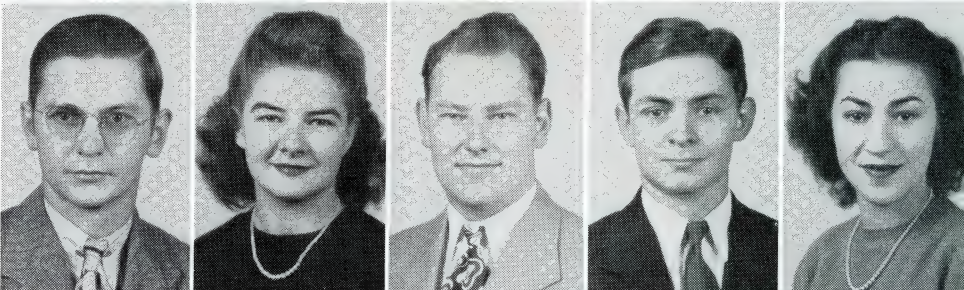
Edna Spencer
 Margaret Spicer
 Ralph Steadman
 Marie Stewart
 Margaret Swadley



C. M. Taylor
 Jim Umholtz
 Bob van Benthuyzen
 Dorothea Wade
 Walter Wade



William H. Wagner
 Chloe Whitlow
 Earl Whitney
 Bill Williams
 Jane Wills



Juanita Wilson
 Garrett W. Woodward
 Charlotte Wright
 James Wykle





SOPHOMORE CLASS OFFICERS

President _____ BUCK HUNT

Vice-President (not pictured) _____ FRED CAMPBELL

Secretary-Treasurer _____ BARBARA FORD

SOPHOMORES

Bill Adams
Violet Akard
Cecile Anderson
William Fain Anderson
Blanche L. Andrews

Clarence F. Anest
Mary Arrowood
Marie Asheworth
Betsy Black
Betty Blankenship

Wallace Bolding
Clyde S. Bond
Lyle E. Brabson, Jr.
Scott Brown
William T. Brown

Martha Briscoe
Jeannette Burkey
Fred Campbell
Patricia Campbell
Audra Carlisle

Clifton Clark
Mary Anne Clark
Alma Ruth Cline
Ernestine Clouse
Henry A. Clouse

Ruth Conner
Dale Cornett
Joie Cox
Richard Cox
Betty Crain

Mary Ruth Crum
James T. Davis
Alpha Day
Eugene Derrick
Earl Eads

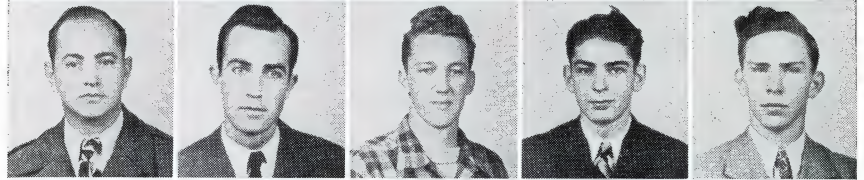
Fay Earl
C. L. Edwards
Earl Elledge
Ben Ellis
Bob Emmert



James D. Evans
 Edward R. Feagins
 Joe Fleenor
 Mary Don Fleenor
 Barbara Ford



Fredon Freeman
 Oswald G. Garland
 Macdonald Gouge
 Carl Grant
 David Gray



Eloise Greene
 Jeanne Greene
 Frances Greenway
 Mabel E. Gregg
 Mary B. Hall



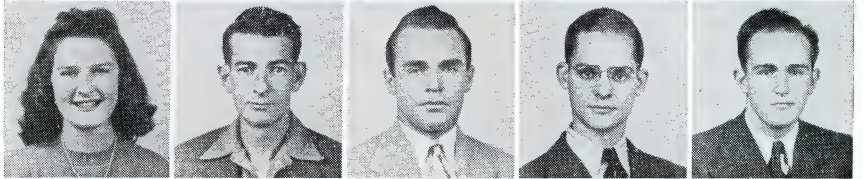
Joe Harmon
 Marjorie Hartsell
 William R. Head, Jr.
 Ruby Heatherly
 Josephine Helton



Grace Henderson
 Leroy G. Hendrix
 Arden Hill
 Virginia Hodges
 Genevieve Hoss



Anna Katherine Howern
 Arthur M. Hulette
 Buck Hunt
 Reed Hurst
 R. Guy Hyder



Charlotte Johnston
 Anah King
 Faye King
 Herbert King
 Hugh Kiser



Evelyn Knapp
 Warren G. Lambert
 Ruth Lamie
 Billy J. Lane
 Marcetta Lane





SOPHOMORES

Rosella Laws
 Virginia Lee
 Paul Lewis
 Mary Nelle Lindsay
 Bonnie Lindsey

Alvin Lloyd
 Floyd L. Lockett, Jr.
 Clara Longbrake
 Claire Lovell
 Jack D. McCulloch

Henry H. McKay
 Margaret Ruth Meredith
 Robert H. Montgomery
 Herbert Moore
 Robert H. Moore, Jr.

Ted Morris
 Frances L. Nave
 Jean Newsom
 Roy Van Pangle
 Harold Patton

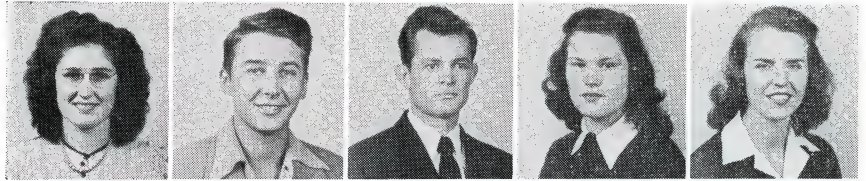
Robert Fain Peterson
 Norma Phifer
 Ray Phillips
 Bennie Pierce
 Clarence Potter

Betty Ramsey
 Dana Reed
 Lawrence Rogers
 Dorothy Rowe
 Francis J. Sanders

Lloyd Saulsbury
 Walter Saylor
 Robert C. Schappert
 Bernard Shell
 Kathleen Shelton

Sam Sherwood
 Norman Shipley
 Louis Simmons
 Alfreda Sisk
 Lone L. Sisk, Jr.

Louise Sisk
 Stanton Sizemore
 John Slonaker
 Bobbie Smith
 Mary Louise Smith



William Smith
 Cecil Sparks
 Keith W. Speer
 Evelyn St. Clair
 Eunice Street



Herman A. Stribling, Jr.
 Robert Strickland
 Kenneth Susong
 Lula Lee Tickle
 Anne Trimble



Suzanne Trusler
 Roberta Vest
 Mary Katherine Wagner
 Reba Walker
 Geneva Wallin



Mary Ann Watkins
 Estelle White
 Jean White
 Paul White
 Hazel Wilds



Alvand Williams
 Ruby Rose Williams
 C. B. Willis, Jr.
 Alta Willson
 Vernon C. Wilson
 Jackson H. Woodward





FRESHMAN CLASS OFFICERS

President _____ GERALD GOODE

Vice-President _____ ELEANOR WILLARD

Secretary-Treasurer _____ DAN WEEKLY

FRESHMEN

Martha Addington
 Reda Adkins
 Barnum B. Anderson
 Dana Anderson
 Eddie Anderson
 Frank Anderson
 Helen Anderson
 W. L. Armstrong
 Johnny Bacon
 Mary Kathryn Bacon
 Bill Bailey
 Herbert Bailey
 William H. Bailey
 Clyde Bain
 Frances Baker

Mary Belle Baker
 Betty Jean Bales
 Nell Barger
 James B. Barker
 Mariam Barlow
 Robert K. Barnes
 Harold F. Barr
 Shirley Jean Bartley
 Martha Baxter
 June Bevington
 Eugene Bingham
 James H. Bingham, Jr.
 George L. Blackburn
 Martha Blackburn
 James Blalock

Robert Blalock
 Otis M. Blanken
 Carson Blevins
 N. C. Bolton
 James Booher
 Lynne Boring
 C. H. Boyd
 Faye Marie Boyd
 Bob Bradshaw
 Dale Bray
 Venida Breedon
 A. D. Brown
 Roy Brown
 Travis Brown
 William Brown



FRESHMEN

Clyde E. Broyles, Jr.

Howard Brumitt

Louise Bryan

Frank J. Buckles, Jr.

Bob Burleson

William M. Burrus

Carl Cameron

Dillard Campbell

Janette Campbell

Willa Florence Cardwell

Stewart Cannon, Jr.

William Carter

Bruce A. Chamberlin

Clarence L. Chase

Mary Ruth Chestnutt

Fred G. Childress

Ed Clark

Juanita Clark

Jo Doris Clayton

Robert Cloyd

Caprice Cole

Mary Coleman

Margaret Conley

James Canter

Jean Conner

Karl W. Cornett

Louise Coulton

James Counts

Charles Cox

Ernest Fred Cox

Mildred Cox

Joyce Nell Crawford

James C. Crowder

Leo Croy

Jim Crum

Betty Cunningham

Judson A. Davis

Virginia Deakins

Bob Denton

Georgia Dodd

Mary Elizabeth Dolen

Robert F. Duff, Jr.

Lula Belle Eggers

Mary Emma Ellis

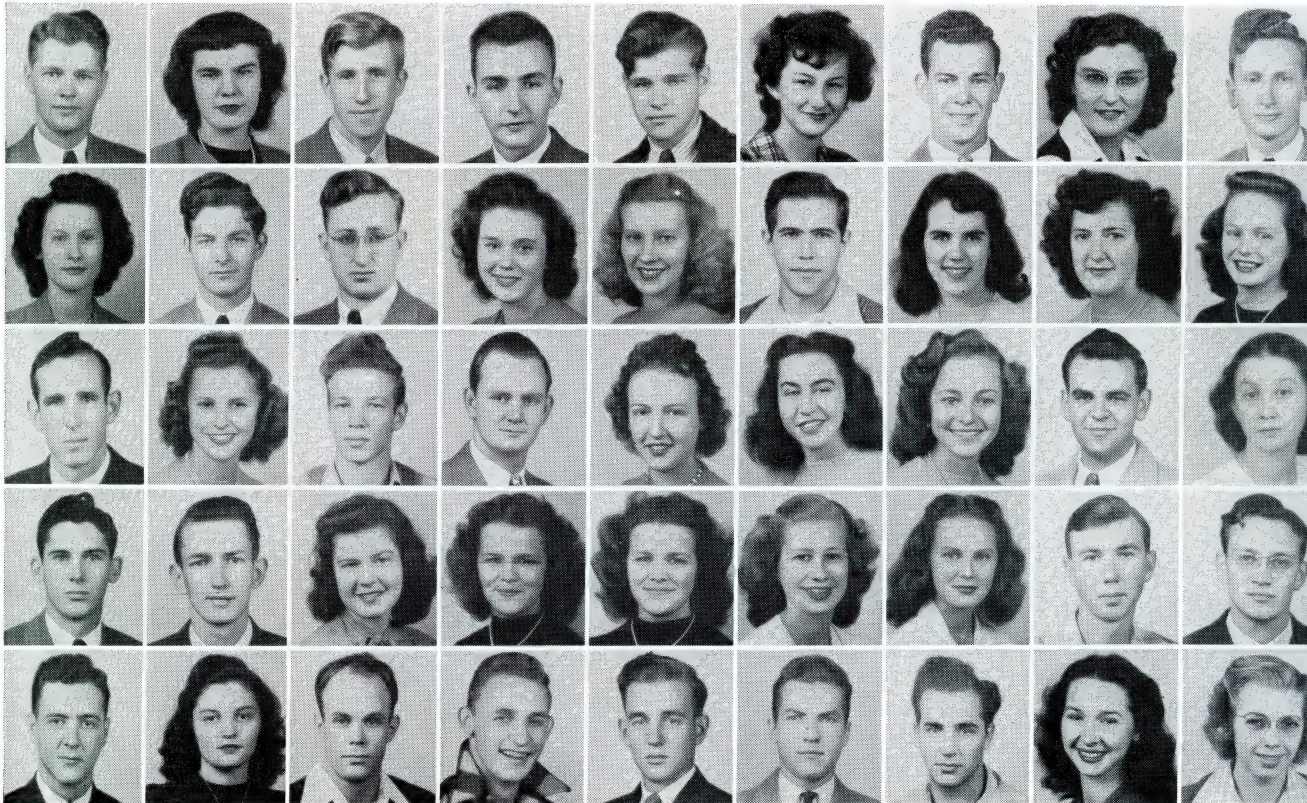
W. G. English, Jr.



Ray Erwin
 Ada Lou Ewing
 Oliver C. Farr
 David Figg
 Roy C. Fleming
 June Frazier
 Jack France
 Marteyne Foshee
 Byron W. Fizzell
 Agnes George
 Mack Gibson
 James Glenn
 Jean Gnann
 Joyce Godsey
 Gerald Good

Joanna Goode
 Inez Goodman
 Margaret Ann Gossett
 Ralph H. Grant
 Emma Greene
 Robert Frank Greene
 Henry Greenway
 Almeda Inez Gregg
 Helen Grills
 Margaret Hale
 Thaddeus H. Hale, Jr.
 June Hamilton
 Stewart Hampton
 William E. Hancock
 Betty Harper

Edythe Harvey
 Ella Harvey
 Rebecca Hawkins
 Helen Hawthorne
 Thomas C. Hendrix
 Earl Henley
 Sam R. Henley
 Virginia Hess
 Lloyd Hicks
 M. C. Hicks
 James L. Hill
 Robert L. Hilton
 Robert L. Hitechew
 Eileen Hixson
 Bobbie Ruth Hodges

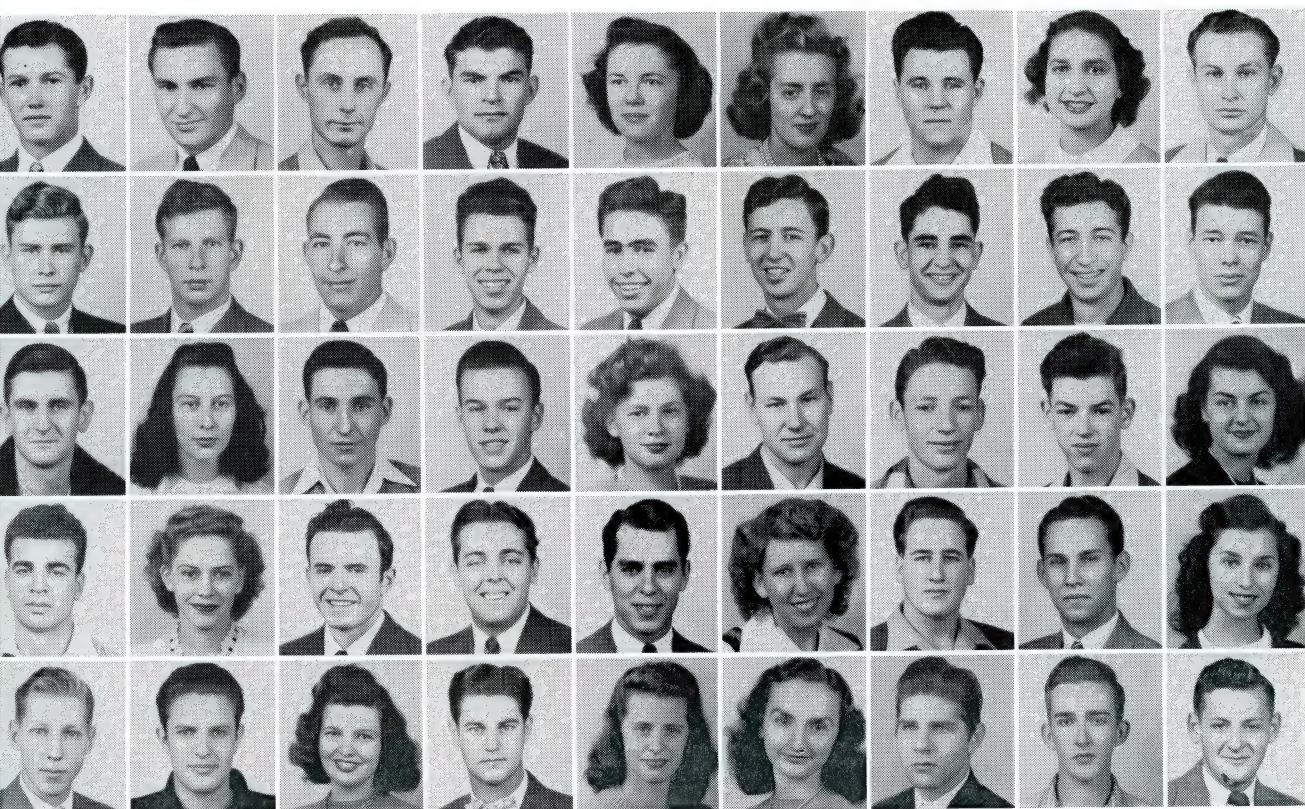


FRESHMEN

Howard H. Holmes
 Clyde Holsclaw
 Millard H. Hopson
 Bruce Hughes
 Mary Lou Hull
 Geraldine Hulette
 Lee Humphries
 Dorothy Hurd
 William H. Hyder
 Robert Irvin
 Roy F. Jarvis
 Tom Jennings
 Jon Jeter
 Dwight Johnson
 N. R. Johnson

William H. Johnston, Jr.
 Stanley Keebler
 Kyle Keesecker
 Robert Keller
 Jewell Keplinger
 Howard Keys
 G. Bruce Kidd
 Magy Jean King
 Robert Kirkpatrick
 Jack Kiser
 Richard Knight
 Eleanor S. Kovach
 Joe Kovach
 Velma Kyker
 R. A. Lacy

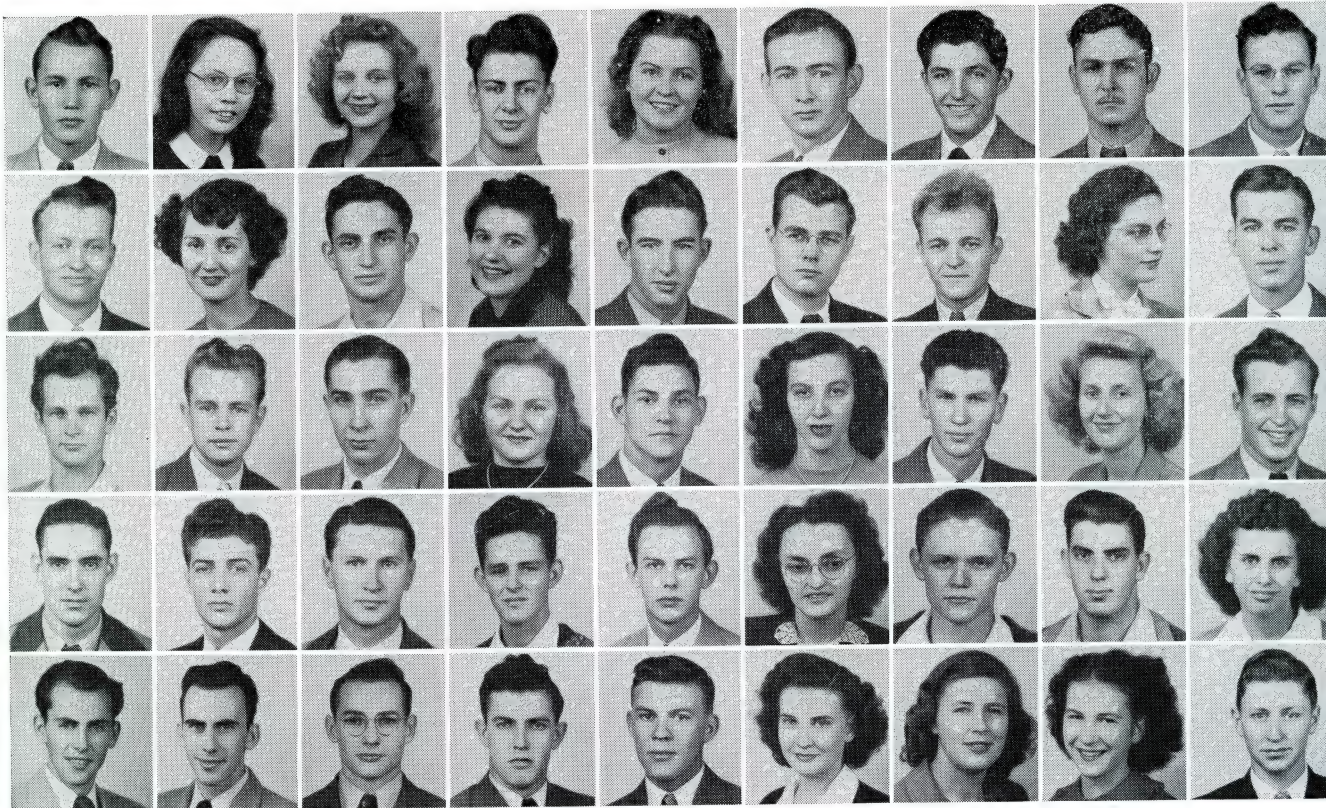
L. M. Laher
 George La Porte
 Jeanette Large
 Lewis Larimer
 Nathan C. Latture
 Jean Lawhorn
 Gene Lawing
 George F. Lawrence
 Aileen Leach
 Harlan E. Ledford
 McNary Lee
 Nancy Leonard
 James F. Liafsha
 Robert M. Little
 Fred Lockett, Jr.



Dale E. Long
 Helen Lowery
 Charlotte Luntsford
 Fred D. Lyle
 Helen Lyle
 John W. Lyons
 George March
 John M. Martin
 Carl Mathes
 Kermit Maupin
 Evelyn Mayes
 Jack McAmis
 Laura McAndrews
 John L. McBee
 Reginald McBride

Othel T. McCarter
 Mary Nelle McClelland
 Charles E. McCoy
 Frederick G. McCoy
 Howard McCracken
 John D. McCray
 Ann McFee
 Warren F. McInturff
 Frances McKee
 Jim McNabb
 Sara Lee Mercer
 Joseph H. Meredith
 Glenn Milhorne
 David V. Miller
 Virgil Miller

Eugene Mitchell
 Walter Montgomery
 Frances Mooney
 Leroy Moore
 Samuel C. Morgan
 Hattie Morrison
 Richard Morrison
 Samuel F. Morrison
 Clyde B. Morton
 Bart Munsey
 Fred Nave
 Mary Nave
 Anna Katherine Neas
 Marilou Neas
 George Ray Nease



FRESHMEN

Catherine Neubert
 Dorothy Jean Neubert
 Mack Nichols, Jr.
 Ann Ruth Nickels
 T. J. Nidiffer
 Jacqueline Parker
 Joan Parker
 James R. Parks
 Walter Parks
 James H. Parman
 Gene M. Patton
 Clarence H. Phillips
 Peggy Phillips
 Truett H. Pierce
 Benjamin L. Pollock

Pauline Price
 Harold Rader
 Joan Ramsey
 John Arthur Randall
 Afton H. Ratliff
 Charles Ray
 Peggy Reeves
 William Roberson
 Martha Rose
 Mary Frances Rose
 Inez Rosier
 Jeane Rowe
 Ruth Rutherford
 Katherine Sanders
 Herbert Sane

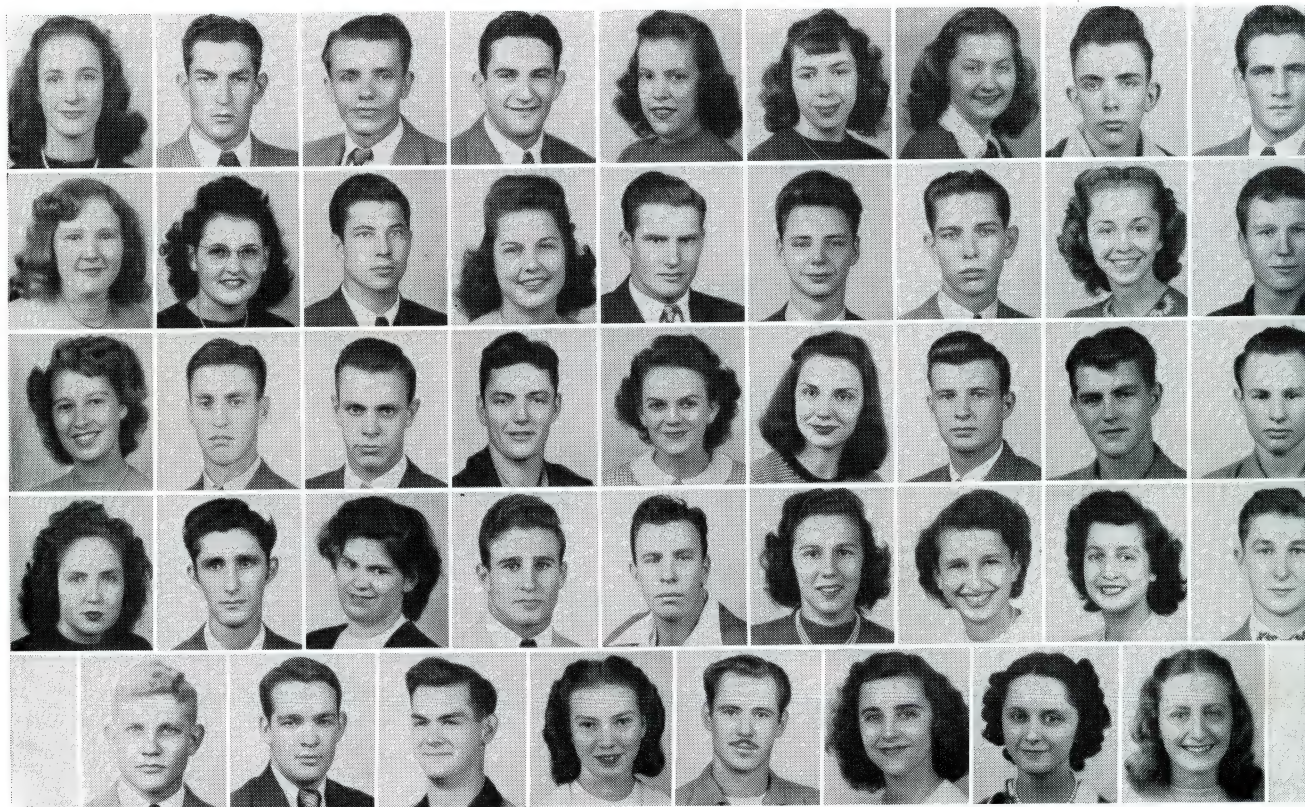
Marjorie Scott
 Jack Seaton
 William H. Sells
 Ann Shell
 Jackie D. Shipley
 William L. Shipley
 George Sims
 Reginald J. Sims
 James E. Sizemore
 George Smith
 Jean Ann Smith
 Patrick H. Smith
 Ben L. Snapp
 Gerald Squibb
 Jack E. Stalland



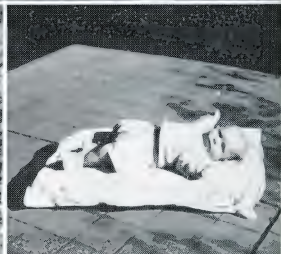
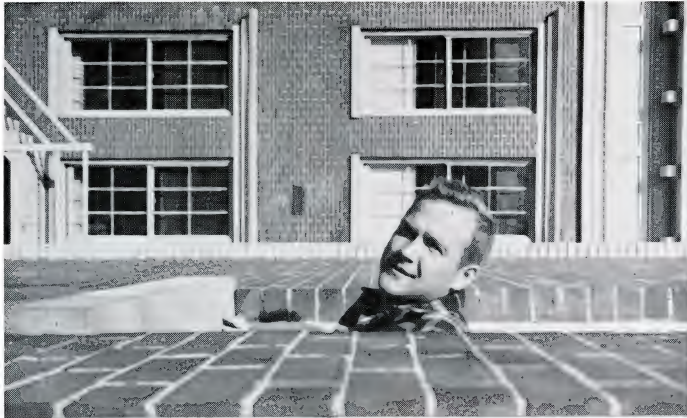
Imogene Stokely
 Paul Stooksburg
 Ralph Street
 Samuel Streiter
 Elizabeth Susong
 Mary Ann Swingle
 Jeanne Anne Taylor
 Lynn Taylor
 Buddy Thomas
 Nancy Rose Thomas
 Ogle Thompson
 James R. Thornberry
 Nelle Thrash
 Jewell S. Tilson
 Wilbur Townsend

Jimmy Treadway
 Carolyn Trivette
 York M. Trivette
 Irene Turner
 Jack Turner
 John Vaughn
 Wilbur Wagner
 Evelyn Waldroup
 Margaret Walker
 Denver Wallace
 Ray Wallace
 Claude A. Wallin
 Blanche Watson
 Vernon Weaver
 Dorothy Webb

Daniel Weekley
 Ben Wexler
 Mary Alice White
 Eleanor Willard
 Doris Williams
 Carl Willis
 William O. Wimmer
 Bud Witcher
 George Woodward
 June Woodward
 John Wooten
 Betty Sue Wykle
 Gloria Yglesias
 Ruth Yoakley



CAMPUS SNAPS



Organizations



We recall: our associations with our fellowmen



TENNESSEE COLLEGIAN STAFF

JOHN NAVE _____ Eitor
 VIRGINIA LAMIE _____ Business Manager
 LOUISE LYLE _____ Associate Editor
 CHLOE WHITLOW _____ Assistant Business Manager
 JIM HOWELL _____ Sports Editor
 JULIAN GRAY _____ Society Editor
 SAM JOHNSON _____ News Editor
 KEITH DAVIS, BERNIE ANDREWS _____ Art Editors
 JIM UMHOLTZ _____ Photographer

Reporters

Dwight Johnson	Bobbie Ruth Williams
Ben Greene	Betty Cox
Jim Carroll	Betty Sue Henry
Fred King	Sue Groseclose

Typists

Margaret Gilliland
 Barbara Ford
 Elizabeth Rowe



“ T ” C L U B

TERRELL PONDER _____ President

ZEB PRESNELL _____ Vice-President

BEN GREENE _____ Secretary-Treasurer

The purpose of the "T" Club is to promote school spirit; and to reach this objective, the Club has a standing offer to help any club or organization on the campus that is interested in promoting school spirit.



UNITED STUDENT BODY

President _____ ZEB PRESNELL

Vice-President _____ OLIVA SMITH CAREY

Secretary-Treasurer _____ TERRELL PONDER

CLASS REPRESENTATIVES

Seniors

Marion Groseclose
Garrett Woodward

Sophomores

John Ramey
Lone Sisk

Juniors

Keith Roberts
Nancy Harrell

Freshman

Dorothy Hurd

The United Student Government is a representative group of the entire student body, striving to aid the students in every way possible and to uphold the ideals of the school through cooperation with the faculty.



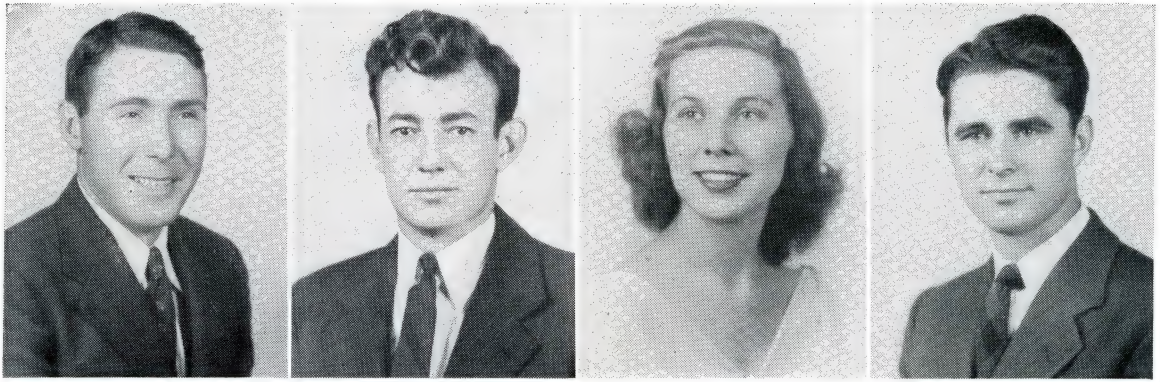
L E A D E R S H I P C L U B

President _____ CHARLENE DOBY

Vice-President _____ MARTHA McIVER

Secretary _____ LOUISE LYLE

The Leadership Club is composed of Physical Education majors and minors, Heads of Sports, "TS" girls, and "T" girls. This group takes the lead in the Intramural program at State.



INTERNATIONAL RELATIONS CLUB

President _____ TYSON JONES
 Vice-President _____ TERRELL PONDER
 Secretary and Treasurer _____ HELEN STILL
 Reporter _____ HARRY CORRELL
 Sponsor _____ DR. D. G. STOUT





CARTER HALL STUDENT GOVERNMENT

MARY B. HALL _____ President
 MARGARET GILLILAND _____ First Vice-President
 BETTYE SUE HENRY _____ Second Vice-President
 BARBARA FORD _____ Secretary
 ELAINE GARLAND _____ Treasurer

FLOOR REPRESENTATIVES

Laura Farthing
 Violet Akard
 Kate Livesay
 Ruth Yoakley

Edna Spencer
 Jean Conner
 Ruth Lamie
 Ada Lou Ewing

This organization has as its purpose and aims better cooperation among the girls, a feeling of responsibility for governing more democratically, and promotion of wholesome atmosphere.



Y . W . C . A .

President _____ BOBBIE RUTH HODGES
First Vice-President _____ EULA FUDGE
Second Vice-President _____ LOUISE SISK
Secretary _____ JEANETTE BURKEY
Treasurer _____ EDNA SPENCER
Reporter _____ AGNES MAHONEY
Pianist _____ MARY NELL LINDSAY
Choister _____ BETTY SUE HENRY

The Young Women's Christian Association, which helps keep alive a Christian atmosphere in the dormitory, is composed of all the young women living in Carter Hall. It sponsors devotional services on Sunday evenings and a party for underprivileged children at Christmas. The Y.W.C.A. also furnishes literature, such as daily newspapers and current magazines, for the dormitory.



CENTRAL RELIGIOUS COUNCIL

President _____ MARGARET GILLILAND

Vice-President _____ GEORGE BLACKBURN

Secretary _____ AGNES MAHONEY

Reporter _____ ZEB PRESNELL

Sponsor _____ DR. STOUT

The Central Religious Council is composed of representatives from the different religious groups on the campus, with one central purpose—to create a closer fellowship between the various organizations of the school. The Council endeavors to strengthen the spiritual life of each individual.



**BAPTIST STUDENT UNION
WESLEYAN FOUNDATION**



CANTERBURY CLUB
MIRACLE BOOK CLUB



FOOTLIGHT PLAYERS

President _____ LAWRENCE MOFFATT

Vice-President _____ BOB VAN BENTHUYSEN

Secretary _____ LOUISE LYLE

Business Manager _____ FRANCIS SPICER

The Spring of '46 was the renaissance of the Footlight Players with the production of a three-act play, "Young April." This year Mrs. Barton and student directors directed three one-act Christmas plays. In the early spring, "Jane Eyre" marked a highlight of the club's work. In March, the club sponsored a Masquerade Ball as its social project for the year. A bright future is evident for this club under the capable direction of Mrs. Barton and Miss Hart.

Director—Mrs. John Barton

Faculty Sponsor—Mary Florence Hart



**FUTURE TEACHERS OF AMERICA
ASSOCIATION OF CHILDHOOD EDUCATION**

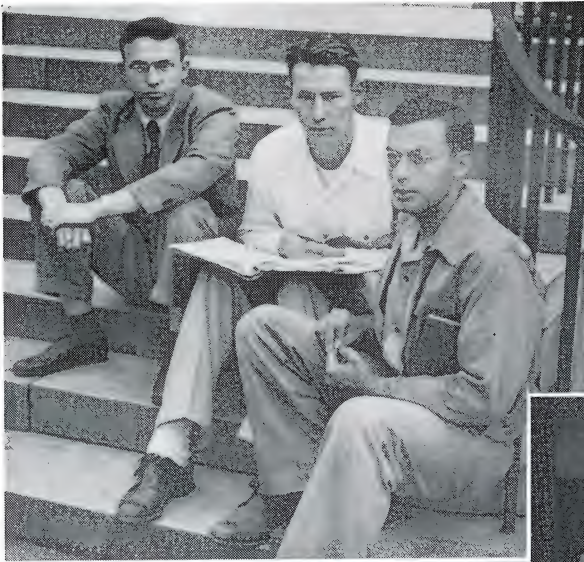


**HOME ECONOMICS
BETA EPSILON KAPPA**



TRAINING SCHOOL

ALL SMILES

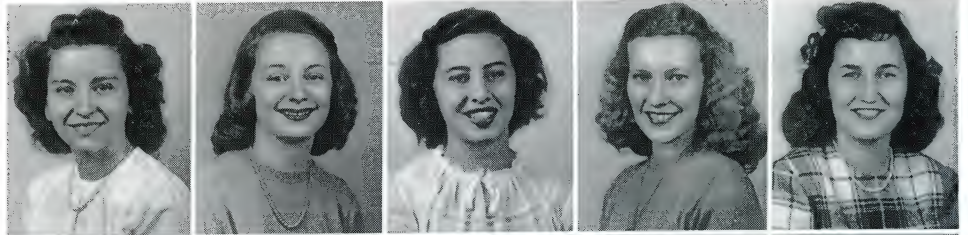


Society



We recall: our association with our fellowmen

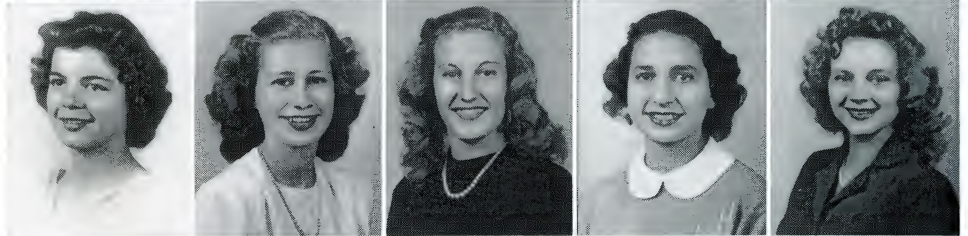
Atkins, Reda
Bales, Jo
Black, Betsy
Campbell, Joyce
Cheek, Betsy



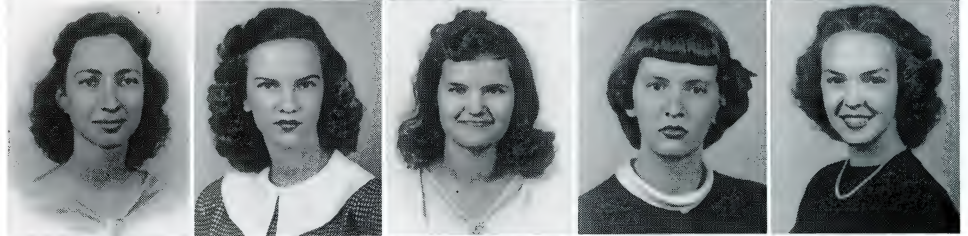
Clouse, Ernestine
Crain, Betty
Cox, Betty
Goode, Joanna
Gossett, Margaret



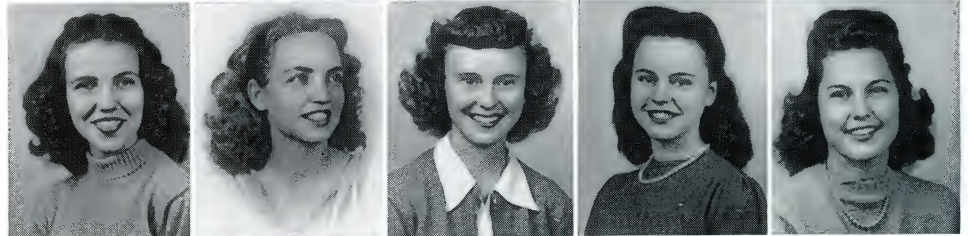
Groseclose, Sue
Hawkins, Rebecca
Henry, Betty Sue
Hurd, Dorothy
Luntsford, Charlotte



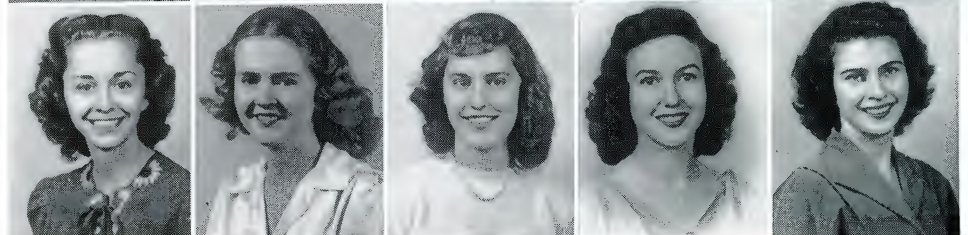
Moody, Doris
Nave, Frances
Nave, Marian
Newson, Jean
Phillips, Peggy



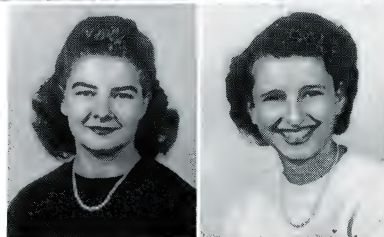
Rowe, Dorothy
Rowe, Elizabeth
Rowe, Jeanne
Shell, Ann
Thrash, Nelle



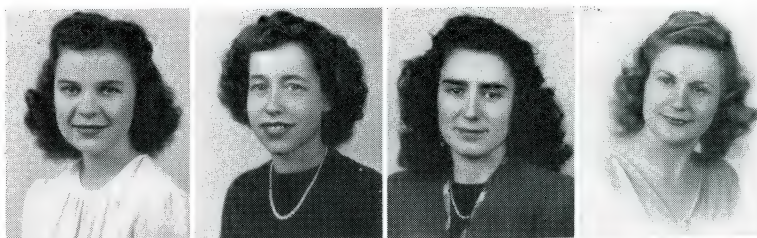
Trivette, Carolyn
Wade, Dorothea
Wagner, Mary K.
Warren, Eleanor
Watkins, Mary Ann



Whitlow, Chloe
Williard, Eleanor



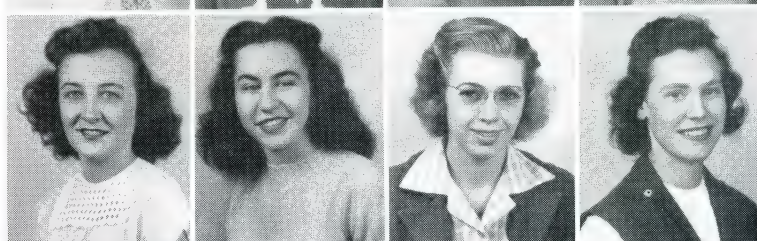
Akard, Violet
Banks, Margaret
Barger, Nell
Bellamy, Lillian



Campbell, Eloise
Crouch, Dorothy
Deakins, Virginia
Dolan, Mary E.



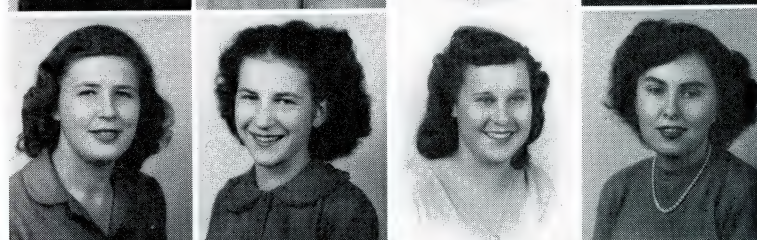
Driskell, Ellen
Grills, Helen
Hodges, Bobbie Ruth
Lee, Dorothy



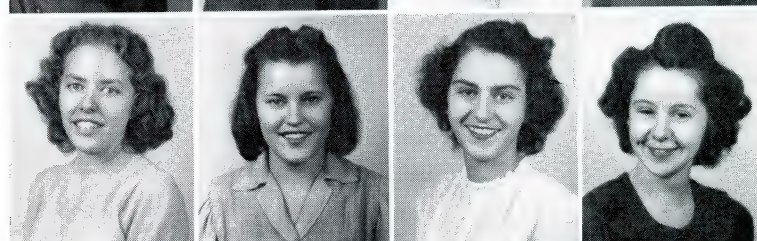
Lewis, Allilion
Lyle, Louise
Mahoney, Marjorie
McFee, Ann



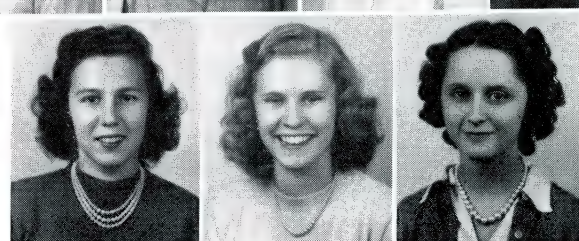
Neas, Anna K.
Neas, Marilou
Ottinger, Joanne
Patton, Virginia



Reynolds, Joyce
Rice, Pereda
Spicer, Margaret
Trimble, Ann



White, Mary Alice
Wilds, Hazel
Yglesias, Gloria





SIGMA OMEGA

OFFICERS

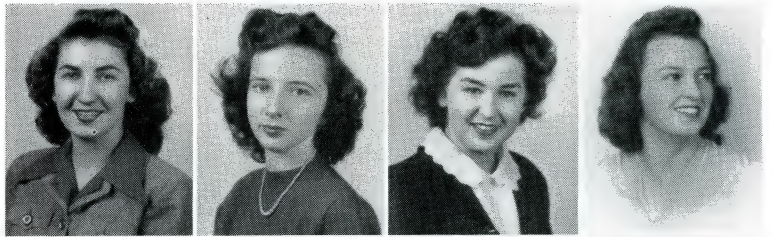
President _____	JOAN KILDAY
First Vice-President _____	JEANETTE BURKEY
Second Vice-President _____	NANCY HARRELL
Secretary _____	MARY DONNA FLEENOR
Treasurer _____	BARBARA FORD
Reporter _____	MARION McLAIN
Sponsors _____	MRS. JIM MOONEY MISS MARY LYONS

CALENDAR

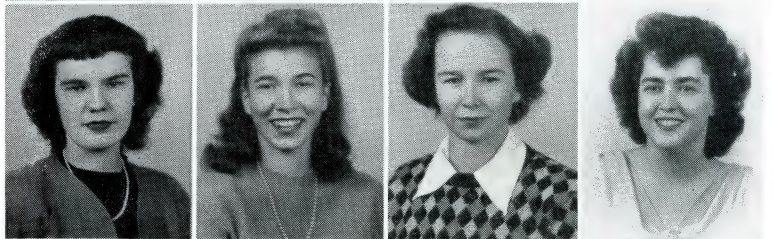
September	—Garden Party
October	—Rush Week
November	--Barnwarmin'
December	—Chili Supper Christmas Dance
January	—Officers' Party for Members Acceptance Breakfast
February	—Valentine Banquet
March	—Hike
April	—Theatre Party
May	—House Party

The purpose of the Sigma Omega Sorority is to encourage the social welfare of ourselves and the school.

Bales, Dorothy
Briscoe, Martha
Coleman, Mary
Deakins, Helen



Ewing, Ada Lou
Farnsworth, Jo
Garland, Elaine
Gilsdorf, Rosalind



Green, Leah
Hall, Mary
Knapp, Evelyn
Lamie, Ruth



Lindsay, Mary Nell
Nave, Mary
Norton, Bobbie
Parker, Jackie



Ramsey, Joan
Rutherford, Ruth
Susong, Elizabeth
Wills, Jane

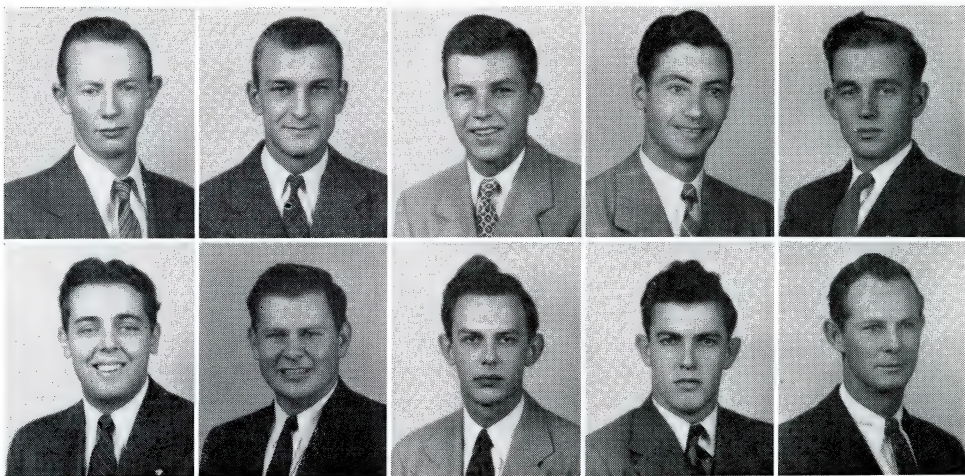




PHI BETA CHI

President _____ MINNIS FRESHOUR
 Vice-President _____ DENNIS HILTON
 Secretary _____ OTIS BLANKEN
 Treasurer _____ ROY C. FLEMING
 Business Manager _____ DON SHELTER

Dale Bray Bill Brown Fred Campbell Lawrence Cox James L. Hill



Bob Laher Paul Lewis Walter Montgomery Bart Munsey Hobart Russell



NU SIGMA ALPHA

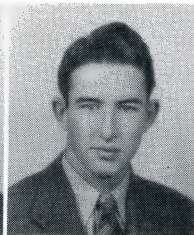
President _____ ROY PANGLE
 Vice-President _____ ZEB PRESNELL
 Secretary _____ ALVIN LLOYD
 Treasurer _____ STANTON SIZEMORE



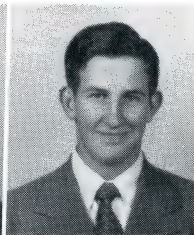
Bill Bailey



Ben Ellis



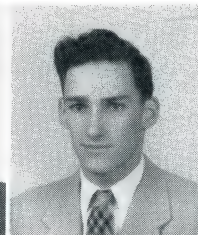
John McBee



Bennie Pierce



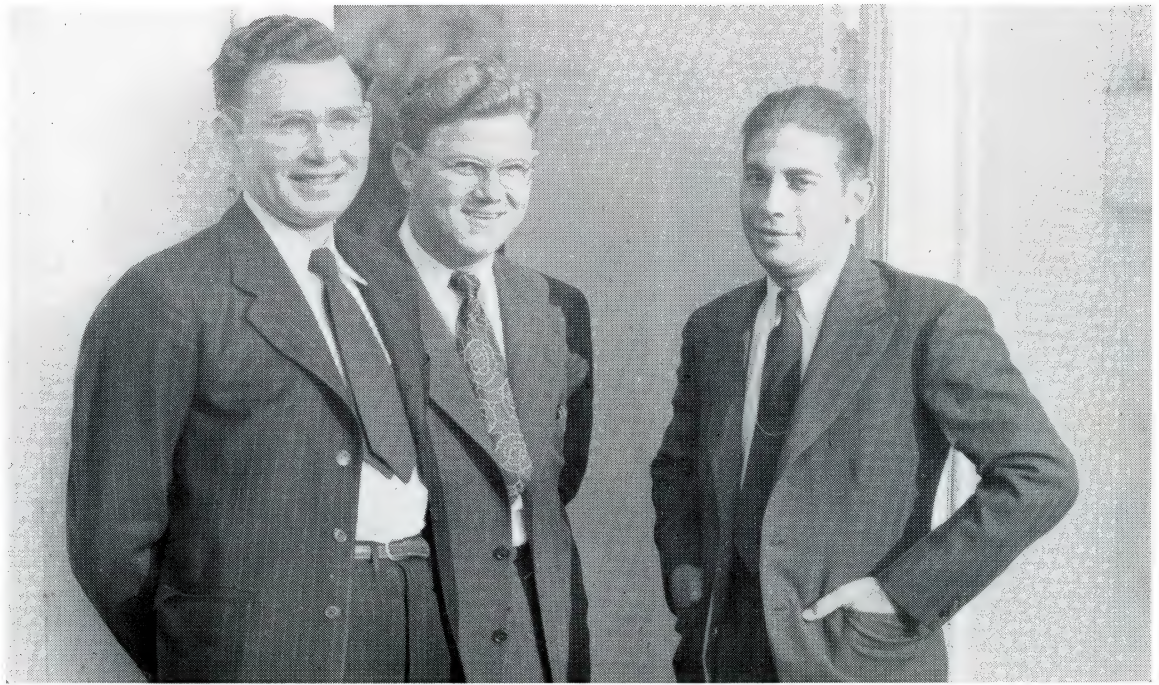
Terrell Ponder



Bob van Benthuyzen

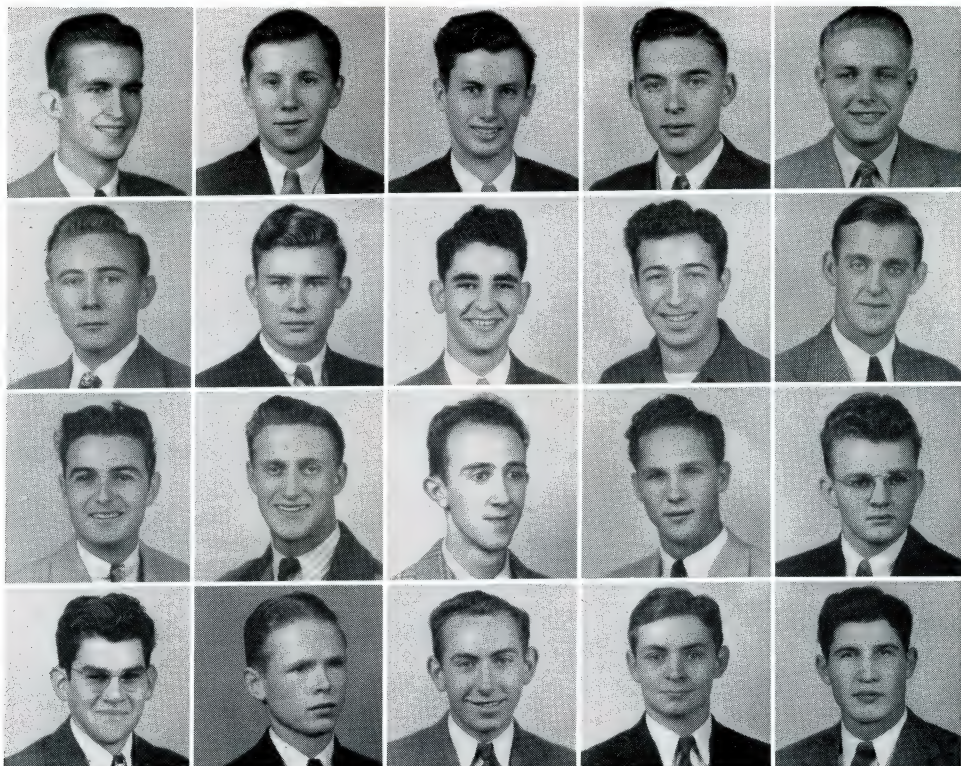


Paul White



M U E P S I L O N N U

President _____ CHARLES PEARSON
Vice-President _____ MARION GROSECLOSE
Secretary _____ V. C. ADCOCK
Reporter _____ LLOYD SAULSBURY



SOCIETY SNAPS





Music



We recall: Our associations with our fellowmen.



GLEE CLUB

President _____ Tommy Boles
Vice-President _____ Harry Correll
Secretary _____ Mary B. Hall
Director _____ Mr. Self
Librarian _____ Fred King
(not in picture)





B A N D

Captain _____ Fred King
First Lieut. _____ Ernestine Clouse
Second Lieut. ___ Wilbur Townsend
Student Director _____ V. C. Adcock

Director—Dr. Butterfield





C H O I R

Manager _____ Dick Rosson

Asst. Mgr. _____ Dot Bales

Secretary _____ Ernestine Clouse

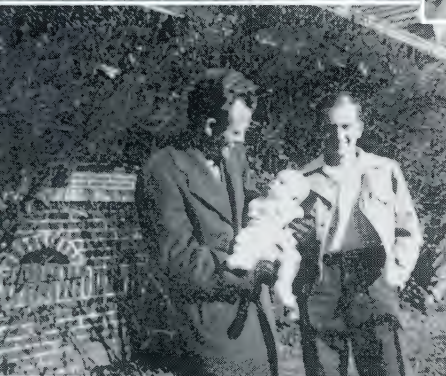
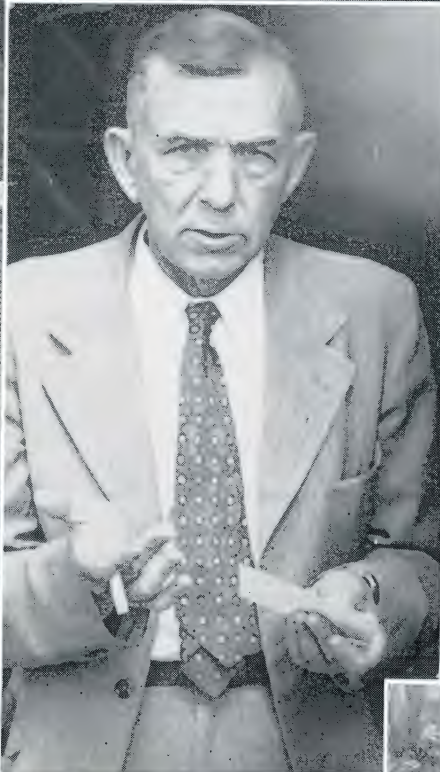
Librarian _____ Don Shetler

Director—Mr. Self

SHARPS AND FLATS



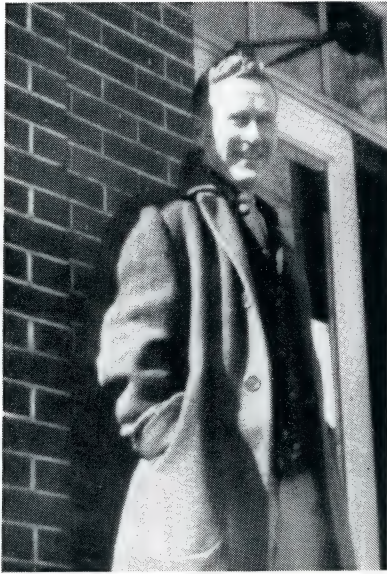
DOING WHAT COMES NATURALLY



Athletics



Teamwork and play, joys and sorrows, defeat and success;

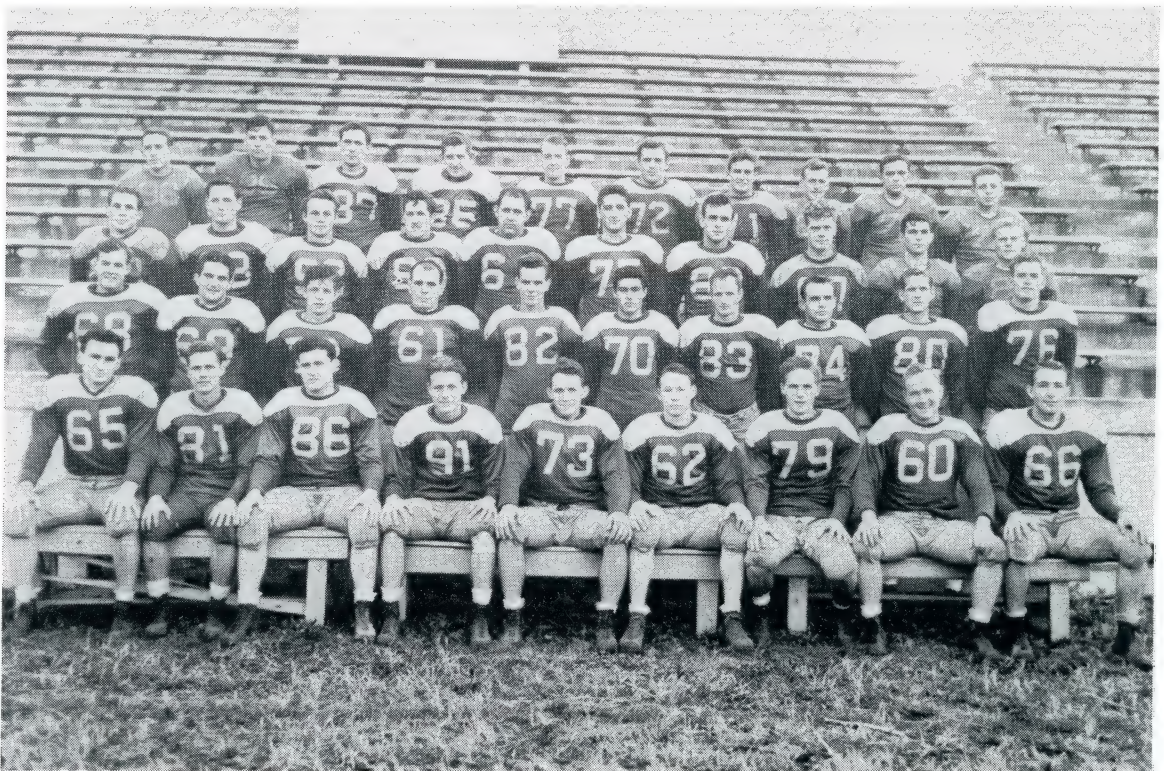


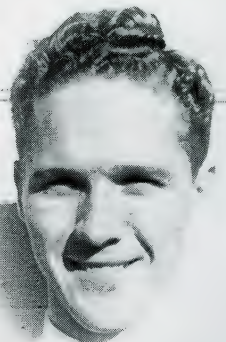
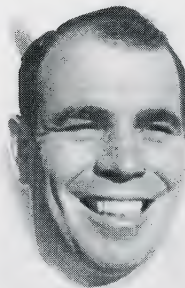
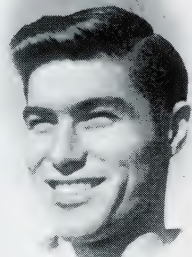
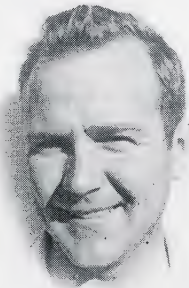
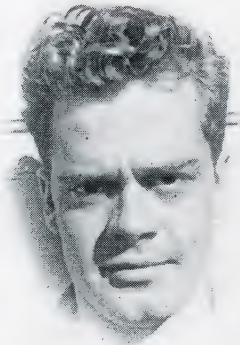
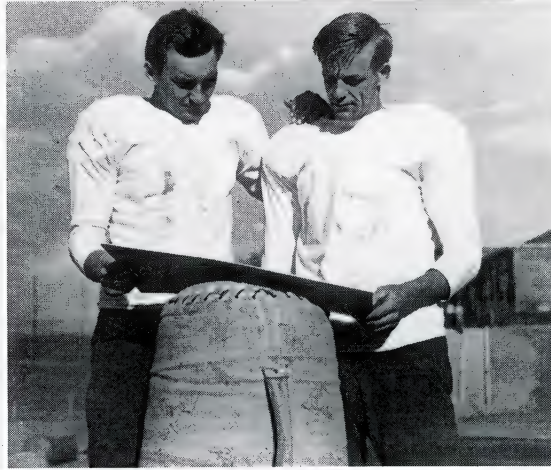
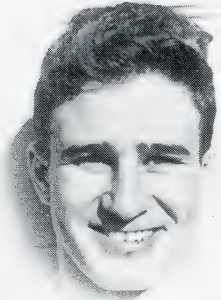
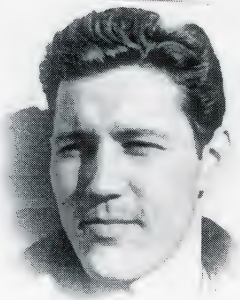
J. G. McMurray
Head Coach



Al Boyer
Asst. Coach

E T S C F O O T B A L L

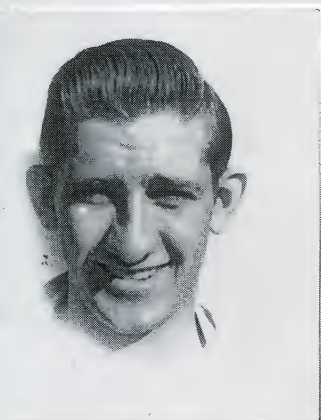






FOOTBALL SCHEDULE

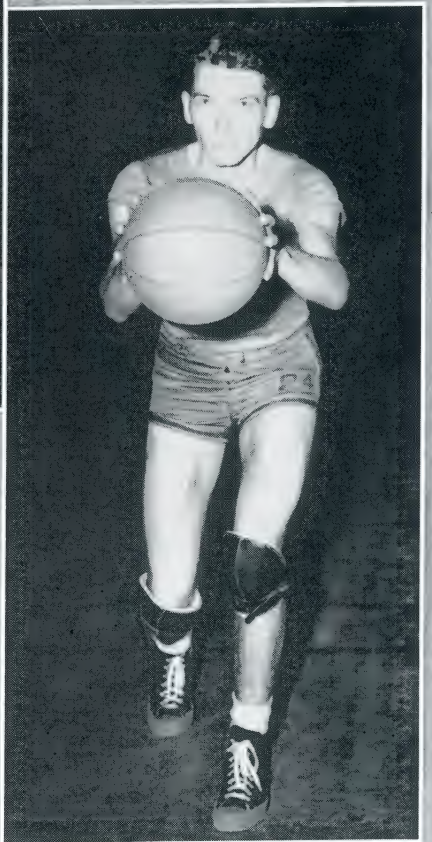
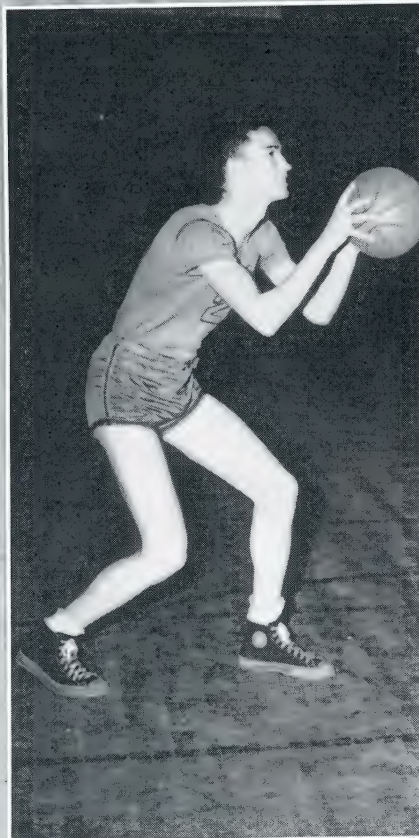
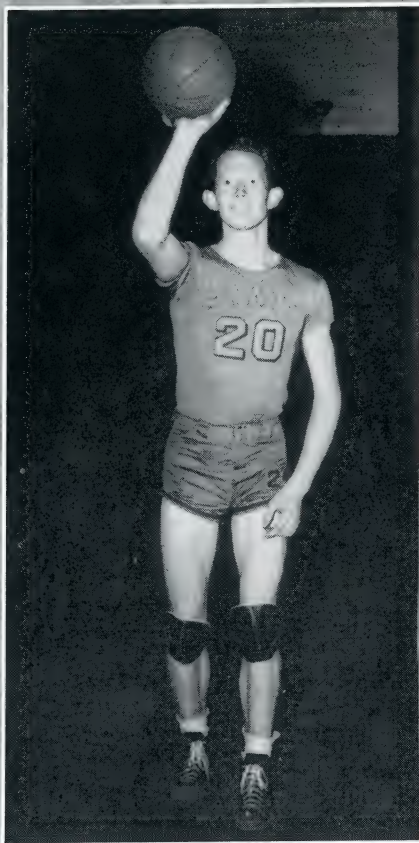
OPPONENTS	We	They
Brevard	32	0
Tusculum	14	0
Georgetown	13	6
Emory and Henry	6	0
Maryville	2	25
Carson-Newman	6	0
Cumberland	34	6
Emory and Henry	19	12





SPORTS

SNAPS

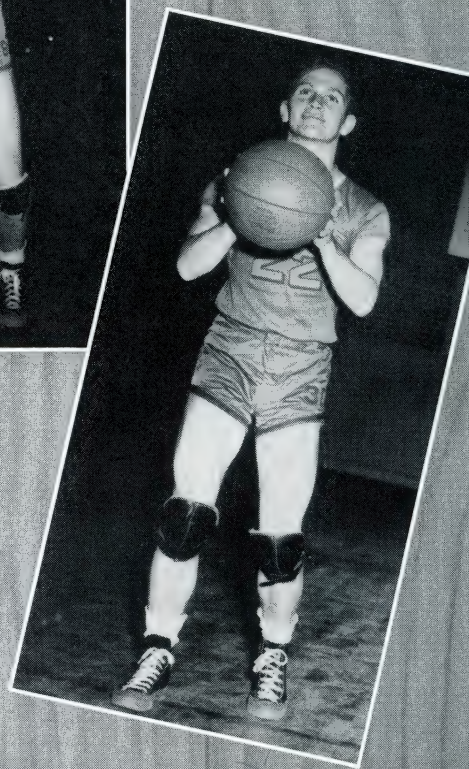
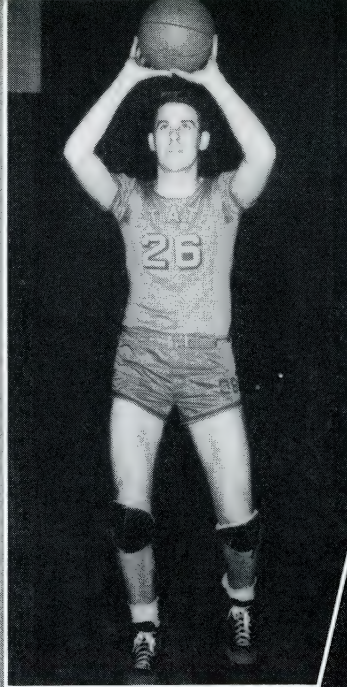
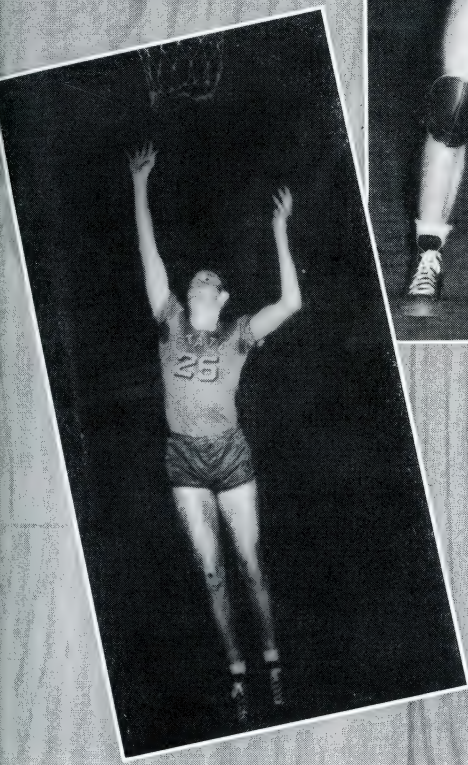


Derrick
Godsey

Presnell
Captain

Pollock
Quarles

BASKETBALL



Pangle
Jordan

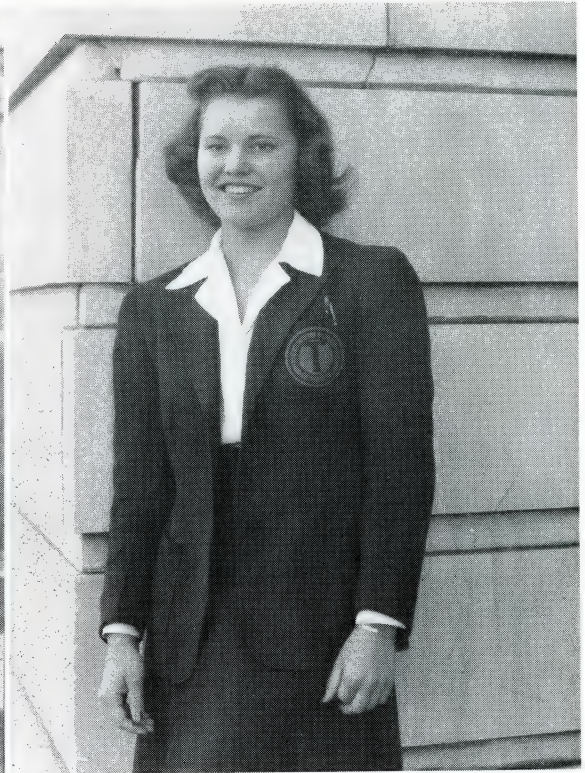
BASKETBALL SCHEDULE

Jilton
Vest

	We	They	
December 9	44	32	Tusculum (There)
December 13	59	44	Emory-Henry (Here)
January 7	48	54	Tusculum (Here)
January 9	38	36	King (There)
January 11	31	51	L. M. U. (There)
January 22	52	36	Maryville (Here)
January 25	55	46	Emory-Henry (There)
January 31	70	37	Bluefield College (There)
February 3	70	37	Hiwassee College (Here)
February 8	49	55	Maryville College (There)
February 11	63	36	Tennessee Wesleyan (Here)
February 15	59	49	L. M. U. (Here)
February 18	80	69	Bluefield College (Here)
February 21	67	47	Hiwassee (There)
February 23	58	50	Tennessee Wesleyan (There)
February 25	82	40	King (Here)

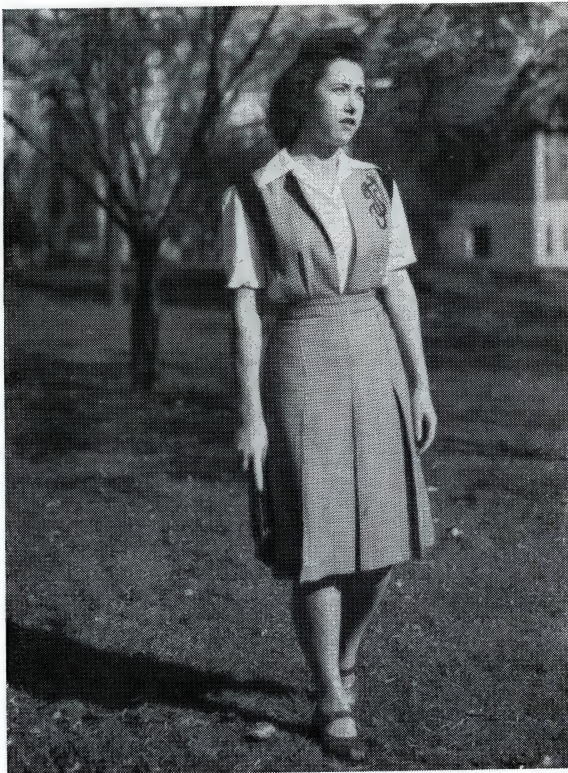


SUE GROSECLOSE
Manager



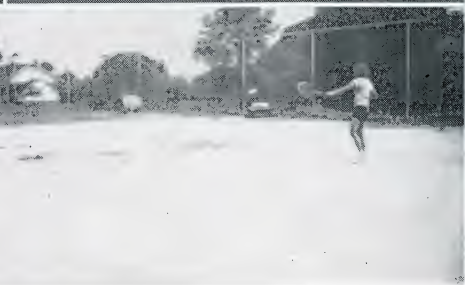
PEREDA RICE
Asst. Mgr.

WOMEN'S INTRAMURALS

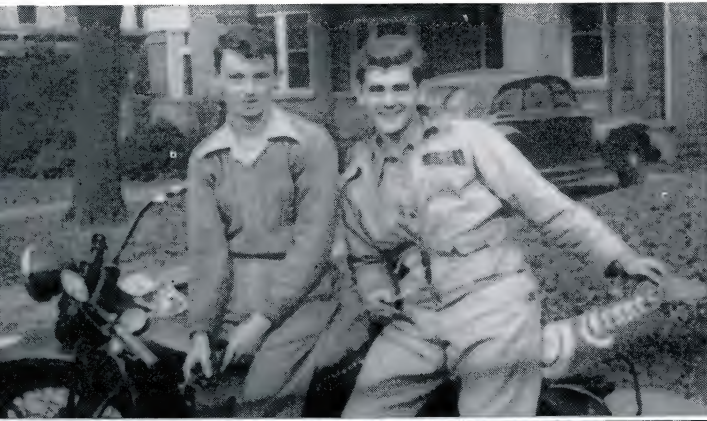


The purpose of the Women's Intramural Department is to provide recreational activities for students both in the dormitory and off-campus. The Department offers the following sports throughout the year: basketball, volley ball, ping pong, bowling, tennis, horseshoes, hiking, softball, badminton, and speedball. Through participation in these activities, the girls work toward the TS and Honor T Sweater awards.

LUCILLE GOODMAN
Director



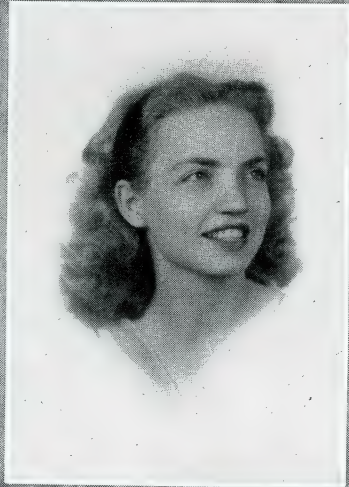
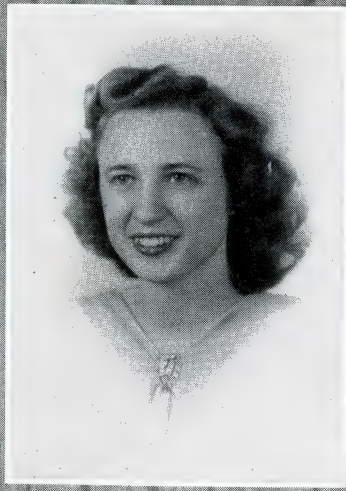
COLLEGE CRUMBS



Features



Those upon whom fortune has bestowed fame and renown.

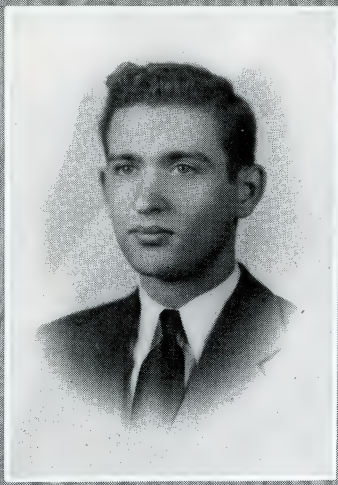


Agnes Mahoney
Elizabeth Rowe

Sue Groseclose
Terrell Ponder

Who's Who IN AMERICAN UNIVERSITIES

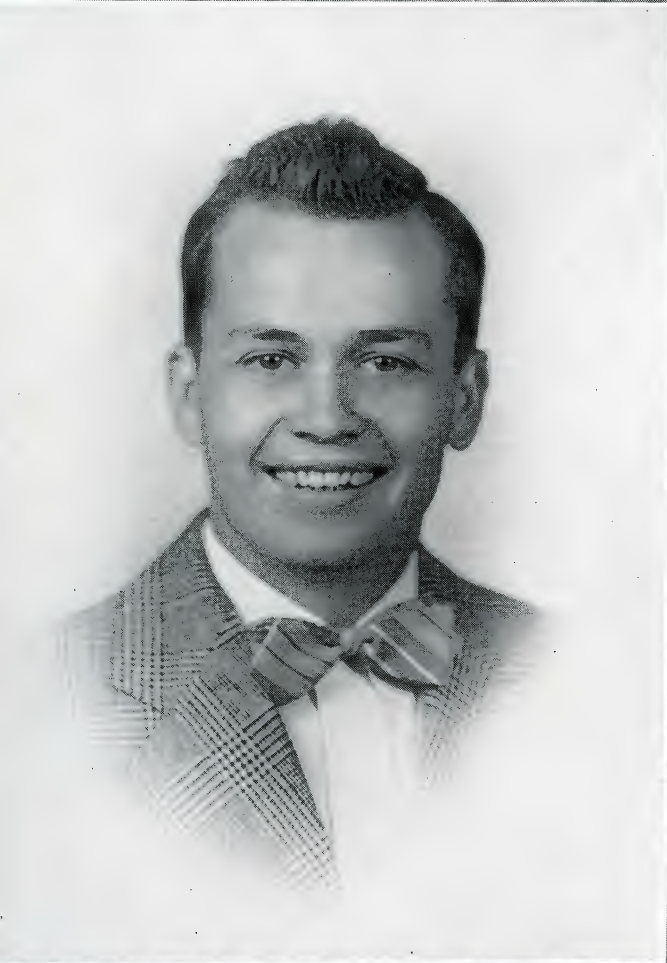
"Who's Who In American Universities and Colleges" is a national organization which recognizes outstanding students in major colleges and universities. The persons selected for this honor on our campus are chosen by the faculty on the basis of character, scholarship, and leadership in extra-curricular activities.



Lawrence Moffatt
Harry Correll

Anna Marie Irish

AND COLLEGES

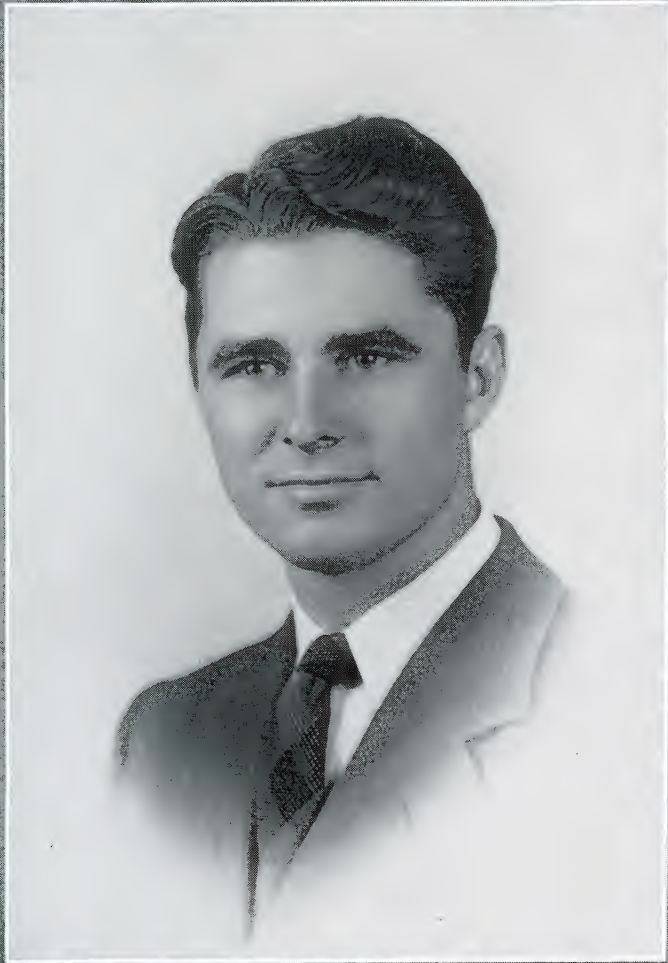


BEST ALL-AROUND BOY
Zeb Presnell

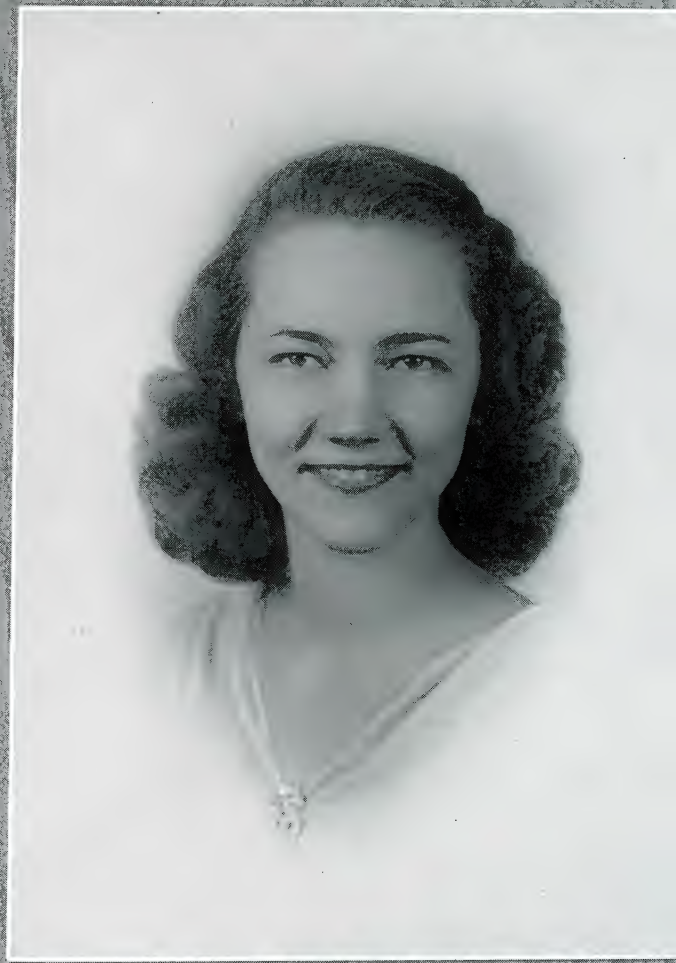


BEST ALL-AROUND GIRL
Sue Groseclose

HALL OF



BEST PERSONALITY BOY
Harry Correll



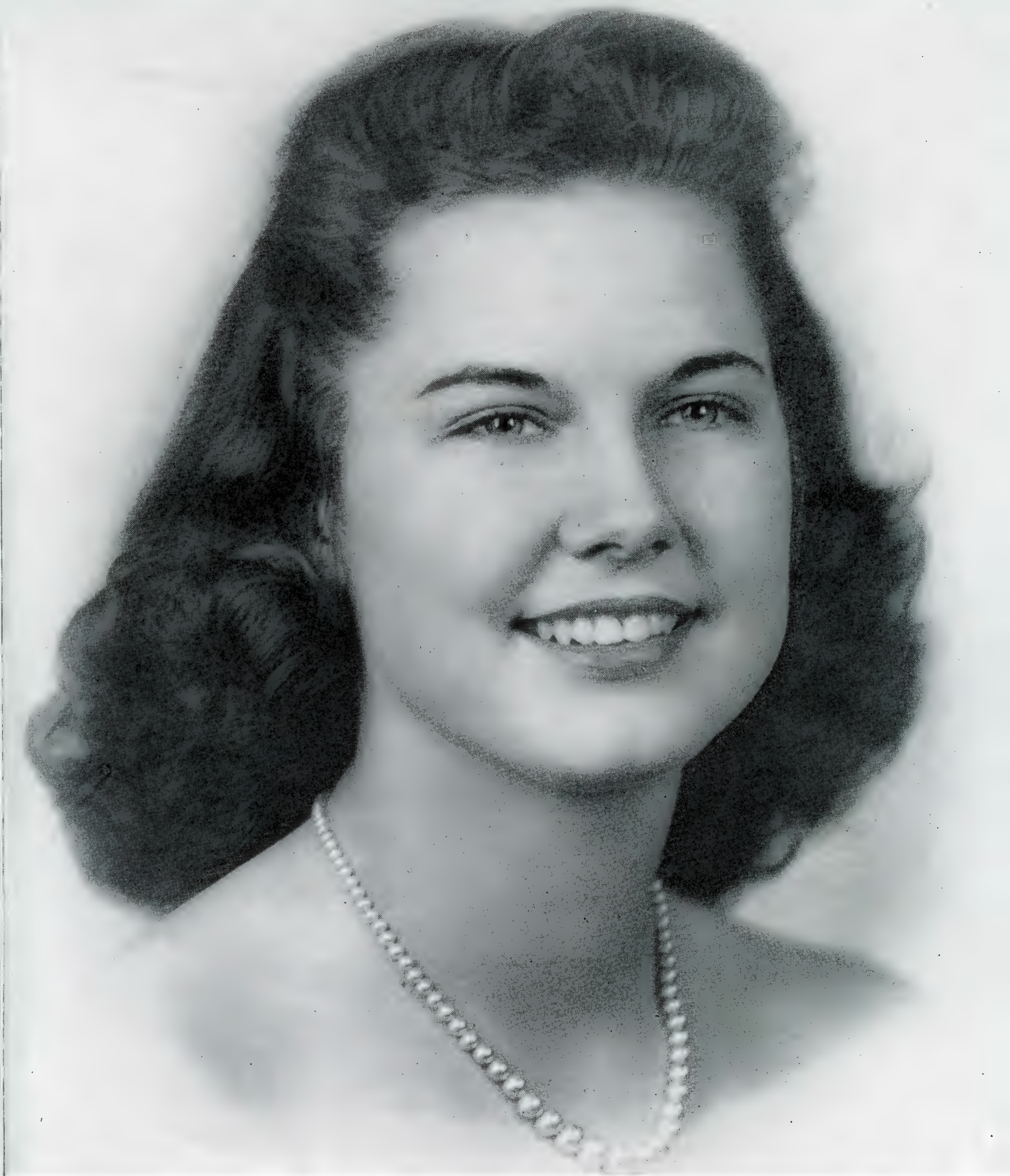
BEST PERSONALITY GIRL
Arina Marie Irish

F A M E



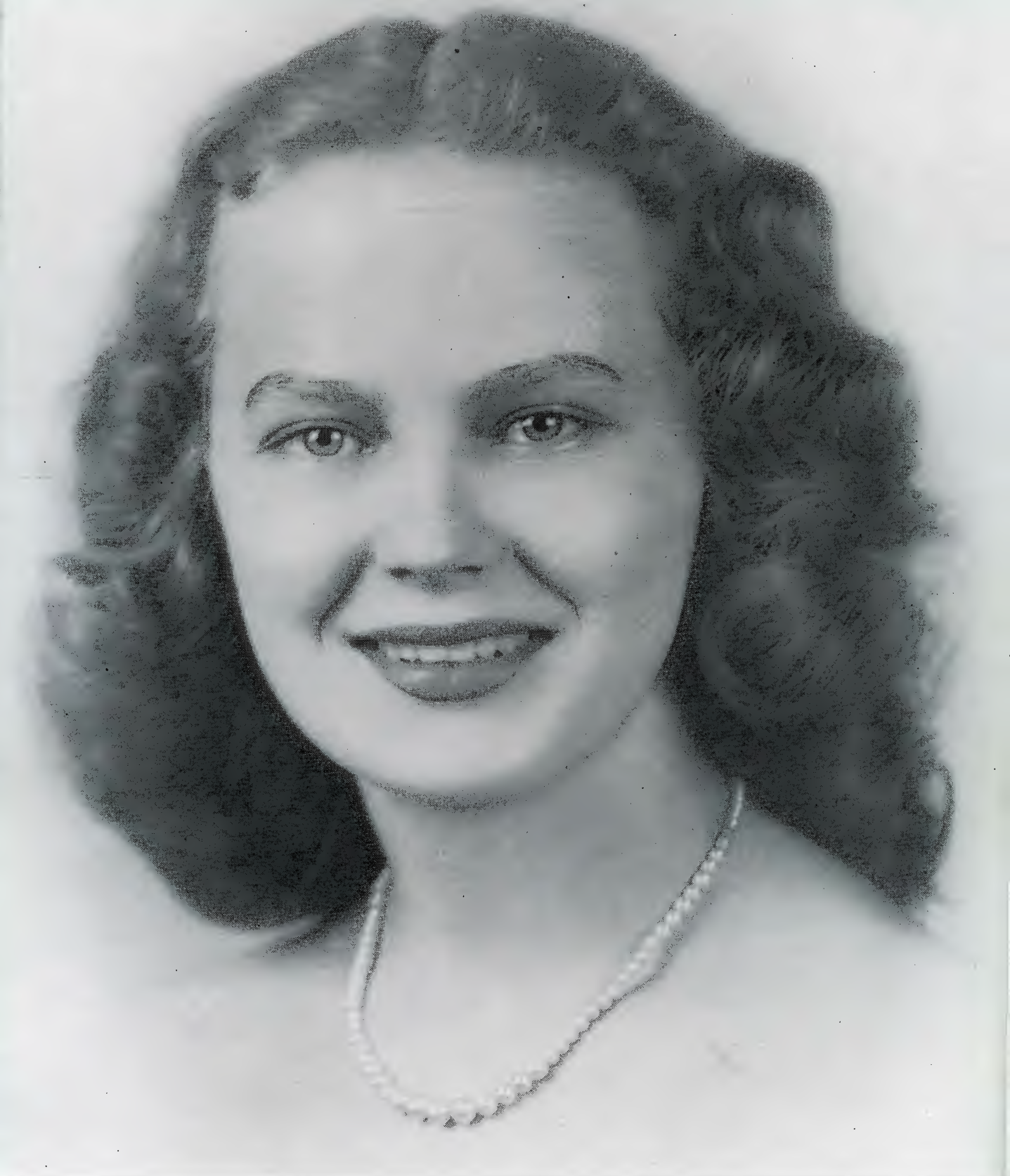
MISS ELIZABETH ROWE

E T S C



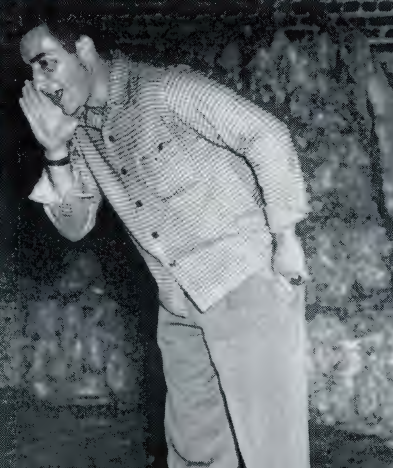
MISS NELLE THRASH

BEAUTIES



MISS HELEN HAWTHORNE

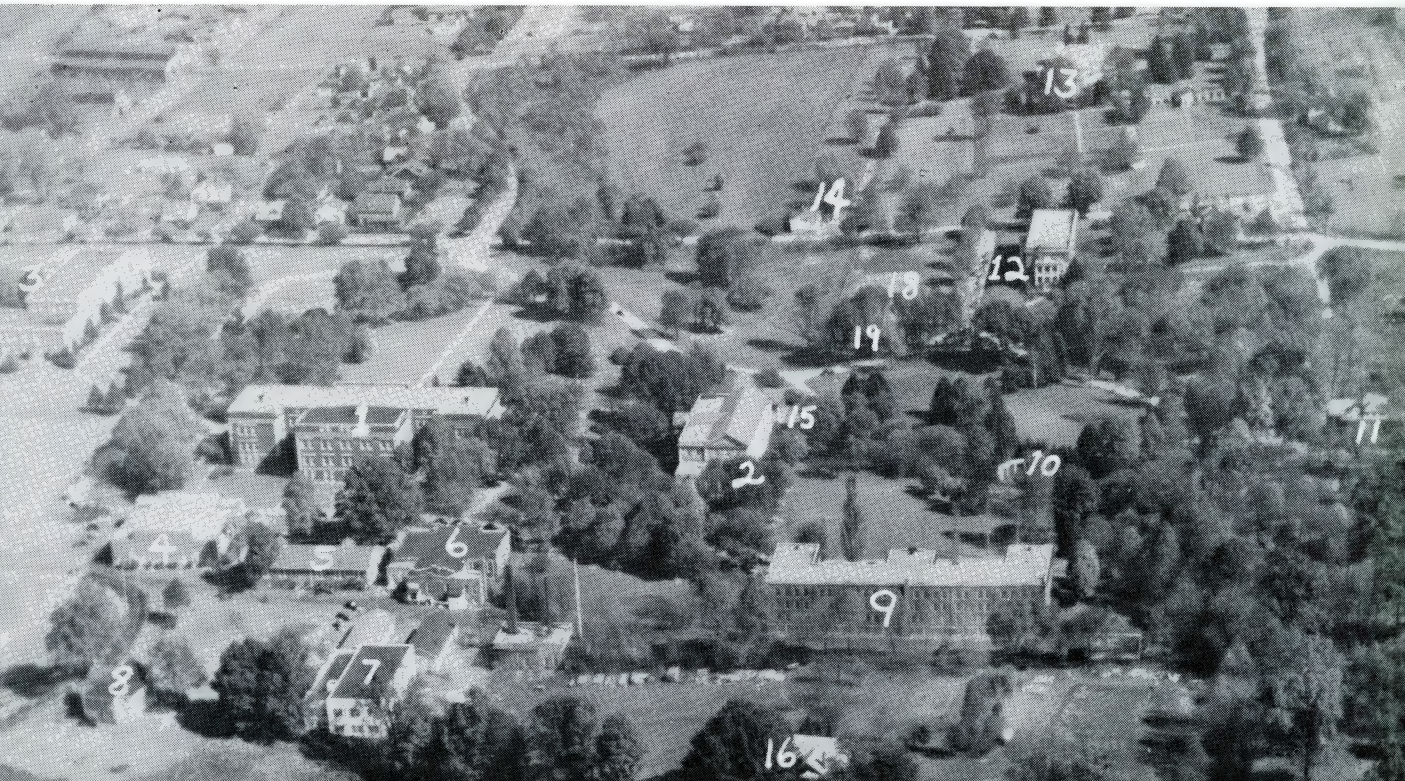
ODDS & ENDS





CAMPUS INDEX

1. Administration Building
2. Library
3. Training School
4. Boys' Gymnasium
5. Girls' Gymnasium
6. Cafeteria
7. Industrial Arts Building
8. Wheeler Hall (Boys)
9. Carter Hall (Girls)
10. Amphitheater
11. President's Home
12. Ritter Hall (Boys)
13. Cooper Hall (Girls)
15. Lake Street Cottage (Boys)
15. Veterans Administration and Clinic
16. Practice House
17. Football Stadium
18. Tennis Courts
19. State's Miniature Niagara



Advertisers



The "Spot to Stop" is

THE SPOT STEAK HOUSE

WE SPECIALIZE IN

STEAKS — CHICKEN — COUNTRY HAM

SALADS — SANDWICHES

ICE CREAM SUNDAES — COLD DRINKS — CANDIES

We Do Not Sell Beer

421 East Main Street

Johnson City, Tennessee

For Service That Is Dependable, Call—

Free Service Tire Company

GOODYEAR DISTRIBUTOR

Johnson City, Tennessee

Two Stores to Serve You

Station No. 1 Phone 3000

Station No. 2 Phone 12

John Martin

John T. Brandon

JOHN MARTIN BARBER SHOP

103 Buffalo Street

Walter T. Byrd

B. A. Parks

Compliments of

The Kingsport Air Service, Inc.

HOME OF THE PROPELLER GRILL

Route 5

Kingsport, Tenn.

**ELIZABETHTON FLORAL
COMPANY**

"Elizabethton's Leading Florists"

400-402 Elk Avenue

Elizabethton, Tennessee

"SAY IT WITH FLOWERS"

Phone 750—Day or Night

Mrs. John P. Lamb—Thad A. Cox Lamb

Compliments of

UNAKA STORES, INC.

ERWIN, TENNESSEE

COMPLIMENTS OF

BECKNER'S

Diamonds, Watches, Jewelry

Johnson City, Tennessee

Established 1886

Compliments of

A. R. BROWN & CO.

Main and Gay Street

ERWIN, TENN.

Visit Our Record Dept.

'The music you want, when you want it'

COMPLIMENTS OF

Five Star Ice Cream Co.

STORE No. 1

511 W. Walnut St., Johnson City, Tenn.

"Home of better ice cream—

We make our own"

Sandwiches, Sodas, Shakes, Sundaes

Magazines & Newspapers

DOSSER'S

HEADQUARTERS FOR—

Ladies Ready to Wear

Piece Goods

Accessories

Shoes and Millinery

Compliments of

ERWIN INSURANCE AGENCY

Main at Gay

Erwin, Tenn.

VARSIITY-TOWN

GRIFFON

HANNAH'S

FINE CLOTHING

HICKEY-FREEMAN

KUPPENHEIMER

CURLEE

Compliments of

Summers Hardware &

Supply Co.

WHOLESALE ONLY

Johnson City, Tennessee

JOHN SEVIER HOTEL

JOHNSON CITY'S FINEST

"On The Main Artery"



Compliments of

Borden Mills, Inc.

Kingsport, Tennessee

See Your Near-by SINCLAIR DEALER
For Courteous Service
G. T. McGUIRE, Agent
SINCLAIR REFINING CO.
KINGSPORT, TENNESSEE

Compliments of
UNION SUPPLY CO.
SULLIVAN STREET
KINGSPORT, TENNESSEE

COMPLIMENTS OF
SLIP-NOT BELTING CORP.
Kingsport, Tennessee

Compliments of
SOBEL'S
KINGSPORT, TENNESSEE

COMPLIMENTS OF
Service Dry Cleaners
Johnson City, Tennessee

COMPLIMENTS OF
MELODY LANE
We Specialize in Steaks
and Sandwiches
Candy — Cigars — Magazines
100 South Roan Street
Johnson City Tenn.

Compliments of
Dillow-Taylor Funeral Home
JONESBORO, TENNESSEE
Phone 66

Compliments of
VICTOR CAFE
AND
ROAN RESTAURANT
JOHNSON CITY, TENNESSEE

MASENGILL'S

WOMEN'S AND MISSES' APPAREL

OF DISTINCTION

Corner Main at Roan Streets

1916

1947



KINKEAD'S FLOWERS

Majestic Theater Bldg.

Phone 191

Johnson City, Tenn.

COMPLIMENTS OF

The Blue Ridge Glass Corp.

KINGSPORT, TENN.

COMPLIMENTS OF

STERCHI BROS. STORES, INC.

222 - 226 East Main Street

IT'S

A

FACT ...

"You Can Save Money at Sterchi's"

Johnson City, Tennessee

COMPLIMENTS OF
THE PETERS COMPANY

Distributors of—
GULF OIL PRODUCTS

Phone 106—Kingsport, Tenn.

"Stop at the sign of the Orange Disc"

All New Cabs Courteous Drivers

Our Cabs Are Insured

DIAMOND CAB CO.

Cabs Equipped with Two-way Radio

Phone 5206

DAY AND NIGHT SERVICE

Amber Wilson, Mgr. 116 Buffalo St.

COMPLIMENTS OF
SNYDER JONES DRUG CO.

JOHNSON CITY, TENN.



This Laundry Does Its Best

Johnson City Steam Laundry

KEEP THE FAMILY CLOTHES

Clearner — Fresher — Sweeter

COMPLIMENTS OF

SELL'S PRODUCE CO.

"A Good Place To Keep in Mind"

Phone 5270

120 McClure Street

Johnson City, Tennessee

FIRST NATIONAL BANK

KINGSPORT, TENNESSEE

Serving the Community Since 1916

MEMBER F. D. I. C.

Compliments of

DIXIE MAID BAKING CO.

MANUFACTURES

Dixie Maid Bread and Cakes

Phone 128

Kingsport, Tenn.

Compliments of

THE PATIO GRILL

347 East Main St.

Phone 2515

JOHNSON CITY,

TENNESSEE

N A S H

COURTESY MOTOR CO.

410 East Main St.—Phone 1326

Johnson City, Tenn.

SALES & SERVICE

W. B. GREEN CO., INC.

"THE PLACE TO GET IT"

Kingsport, Tennessee

FOR THE FINEST . . .

Jewelry, watches, and diamonds
see our line first. We specialize in
the best quality at the most reason-
able price.

ROITHNERS'

Jewelry and Gift Shop

115 Buffalo Street

Fine China, Crystal, Silverware

EARLES DRUG STORE

Phone 1830

120 East Center Street

Kingsport, Tennessee

"Always a Friendly Welcome"

Compliments of

RAINBOW CORNER

Sodas—Sandwiches and—

"Everything under the rainbow"

Corner Walnut and Earnest St.

JOHNSON CITY, TENN.

H. E. HART

JEWELER

Diamonds — Watches — Jewelry

Johnson City, Tennessee

COMPLIMENTS OF

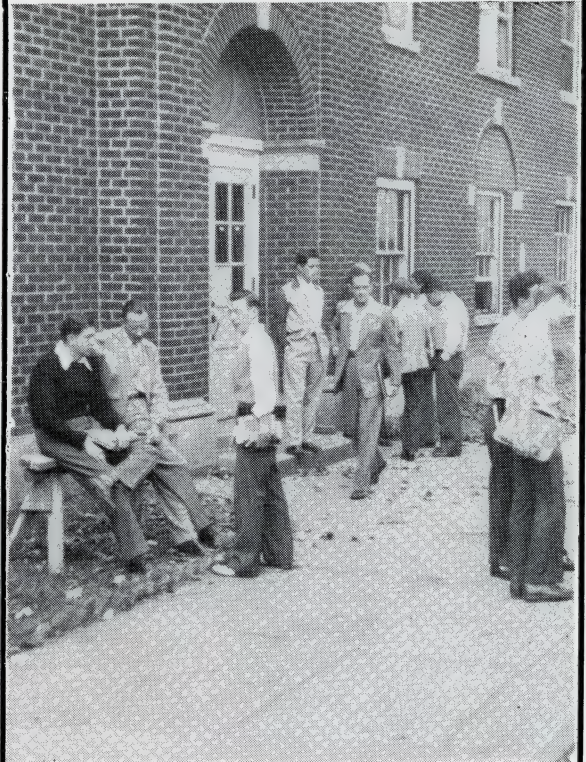
Your "Fresh-up" Drink

7-UP BOTTLING CO.

355 E. MAIN ST.

Phone 303

Johnson City



COMPLIMENTS OF

AUTO RENEWAL CO.

JOHNSON CITY, TENN.

COMPLIMENTS OF

THE SHAMROCK

Johnson City, Tennessee

COMPLIMENTS OF
THE HAMILTON NATIONAL BANK
OF JOHNSON CITY

YOUR ACCOUNT WILL BE APPRECIATED

Member Federal Deposit Insurance Corporation

Always Shop At . . .

DIXIE BARBECUE

Johnson City, Tennessee

Home of Delicious Sandwiches

Meeting Place of all College

Boys and Girls

COMPLIMENTS OF

BUDGET SHOP

Ladies Ready to Wear

231 E. Main Street

Johnson City :: Tennessee

Compliments of

MAJESTIC THEATRE

Johnson City Tennessee

COMPLIMENTS OF

ALLEN CLEANERS

704 BUFFALO STREET

JOHNSON CITY, TENNESSEE

COMPLIMENTS OF

SALYER CANDY COMPANY

119 East Market St.

JOHNSON CITY, TENNESSEE

COMPLIMENTS OF

WILSON PHARMACY

"A GOOD DRUG STORE"

Market at Watauga

Johnson City

Tennessee

"Voted
Best
by



Taste
Test"



COMPLIMENTS OF

WILLIS

PRODUCE

112 E King — Phone 85

Compliments of

McClellan Stores Company

JOHNSON CITY, TENNESSEE

CASH AND HAUL

Wholesale Grocery Co., Inc.

JOHNSON CITY, TENNESSEE

QUALITY DRY CLEANING . . .

WHITE CITY LAUNDRY

LAUNDERERS — DRY CLEANERS — DYERS

Phone 5134

Johnson City, Tenn.

SILERS

QUALITY FURNITURE

ELECTRICAL APPLIANCES

JOHNSON CITY, TENNESSEE

ERWIN

ELIZABETHTON



COMPLIMENTS OF

HENRY'S JEWELRY

ERWIN, TENNESSEE

The Pictures for this Annual

Were Made by

The Charley Cargille Studios

Johnson City, Tenn.

FRENCH DRY CLEANERS

LEADING CLEANERS

Complete Storage For Furs, Summer and Winter Clothing

JOHNSON CITY — ERWIN — JONESBORO

"Quality Dry Cleaning for More Than Twenty Years"

Compliments of

Ruth Andrews Florists

203 S. Roan Street

Phone 316

COMPLIMENTS OF
THE SEVIER THEATER
AND

THE TENNESSEE THEATER
JOHNSON CITY'S HOME-OWNED
THEATRES

"Enjoy Your Off-hours Here"

Compliments of

Morris Funeral Chapel

"Over a Quarter of a Century Service"

JOHNSON CITY,

TENNESSEE

S. H. KRESS & CO.

"Where the Students Buy

Their School Supplies"

Johnson City, Tenn.

COMPLIMENTS OF

Johnson City's Newest Women's Shop

The Lorraine Shop

240 E. Main St.

Phone 228

Specialty Printing Co.

Phone 34

Johnson City

The Coca-Cola logo is written in its signature script font, with the 'C' and 'C' being significantly larger and more stylized than the other letters.

TRADE-MARK REG. U. S. PAT. OFF.

COMPLIMENTS OF

Anderson Drug Store

"ON THE MINUTE SERVICE"

The Convenient Corner

Johnson City

Phone 1094

COMPLIMENTS OF
AMERICAN BEMBERG CORPORATION
AND
NORTH AMERICAN RAYON CORPORATION

Compliments of
Orange Crush Bottling Co.
112 Jobe Street—Phone 43
Johnson City, Tennessee

COMPLIMENTS OF
FRIZZELL'S DAIRY
Pasteurized Dairy Products
501 W. Walnut St.
JOHNSON CITY, TENNESSEE

COMPLIMENTS OF
★
SMITH JEWELERS
Hamilton—Elgin—Longines
★
ELIZABETHTON, TENNESSEE

COMPLIMENTS OF
★
Elizabethton Hardware Co.
GOOD HARDWARE AND
FINE FURNITURE
★
ELIZABETHTON, TENNESSEE

LAY PACKING CO.

CLOVERLEAF HAMS

BACON AND LARD

Johnson City, Tennessee

Get Your Flowers From

GUNNAR TEILMANN

Johnson City's Leading Florists

318 E. Main — Phone 511

For your musical needs—

THE MUSIC MART

W J H L BUILDING

143 W. Main St.

Johnson City

Compliments of

GENERAL MILLS, INC.

Johnson City, Tennessee

RED BAND ENRICHED FLOUR

GOLD MEDAL KITCHEN TESTED

ENRICHED FLOUR

GEISLER

SUPER MARKET

Phone 462

Elizabethton, Tenn.

CITY MOTORS

"YOUR PACKARD DEALER"

224 W. Market St.

Johnson City

DRINK PEPSI-COLA

IN BOTTLES AT FOUNTAINS

Pepsi-Cola Bottling Co.

Johnson City, Tenn.

Compliments of

KISER FUNERAL HOME

406-408 N. Roan

Phone 5200

COMPLIMENTS OF
A FRIENDLY STORE

Johnson City, Tennessee

MARKET STREET DRUG CO.

A GOOD PLACE TO GET THE BEST

134 West Market St.

Phone 5212

CARLTON JEWELERS

"Your Guarantee of Quality and Satisfaction"

WATCHES

DIAMONDS

SILVER

LUGGAGE

602 Elk Avenue

Elizabethton, Tennessee

Phone 1050



GOLDSTEIN'S

LADIES' READY TO WEAR

MILLINERY

212 E. Main

Johnson City

THE YELLOW CAB COMPANY

"THE THINKING FELLOW RIDES THE YELLOW"

Phone 5252

Johnson City

The Chocolate Bar

THE SEVIER SHOP

THE GABLES

SODAS

CANDIES

TOBACCOS

GIC STORE

GROCERIES, FRESH MEATS

AND VEGETABLES

929 W. Walnut

Johnson City

Tennessee

COMPLIMENTS OF

Erwin National Bank

ERWIN, TENNESSEE

PATY LUMBER CO.

Elizabethton

Phone 5115

Johnson City

Phone 5119

"You Are Most Likely To Find It At Kings"

We invite you to test for yourself this quotation that comes from the lips of many a smart student, whether your want is a high fashion or one of the minor every day necessities.

K I N G ' S

East Tennessee's Most Complete Store

"Where Those Who Know Buy Their Clothes"



*As we leave this gate, it slowly closes to us;
But open ever for those who feel as we:
Revealed in life, but fate remains unseen.*

